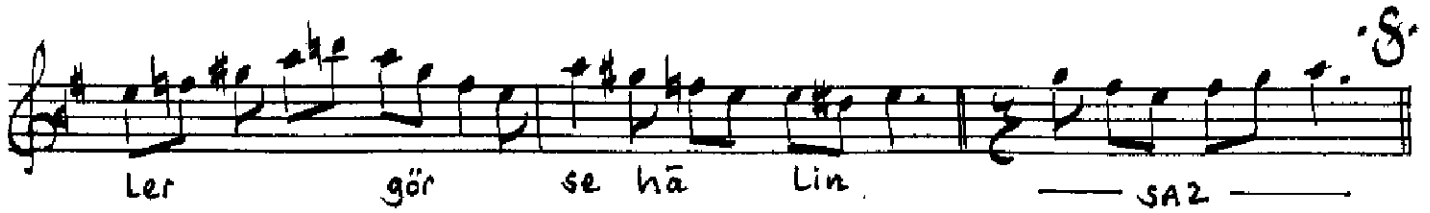
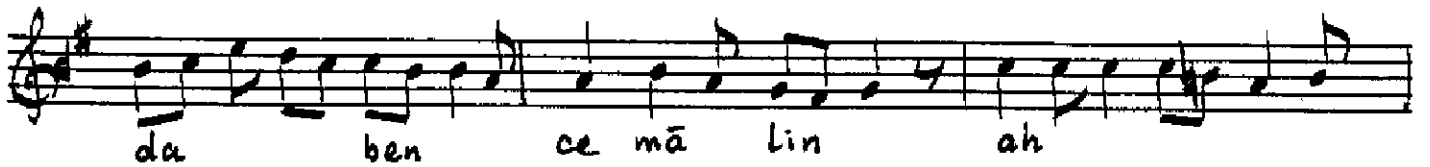
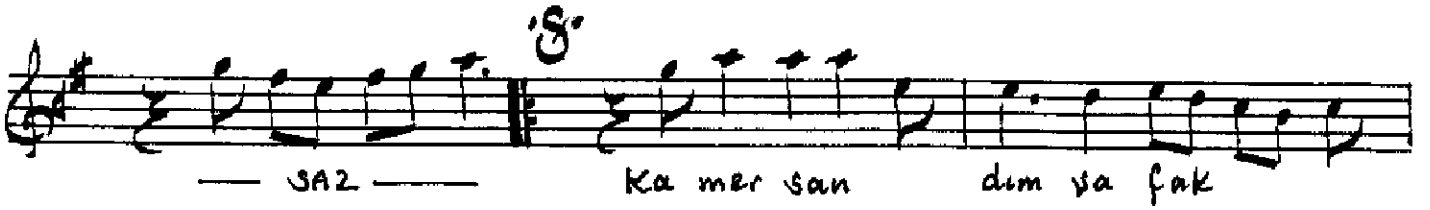
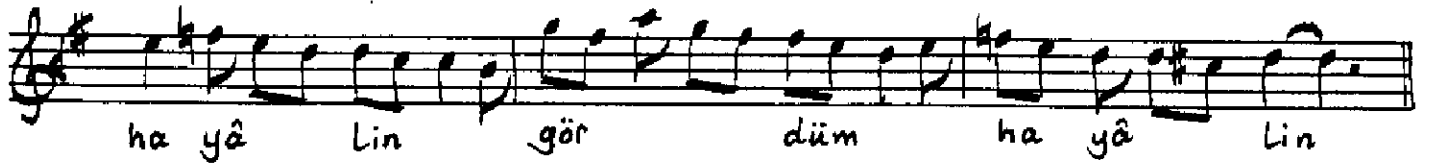


# TÄHİR BÜSELİK ŞARKI

Uslûl: Cürceuna

Muallim İsmâill Hakkı B.



TAMİRBÜSELİK ŞARKI (devamı)

ARANAĞMESİNE

SAZ

ARANAĞMESİ

Sarılmış tülbere gördüm hayâlin  
Kamer sandım şafakda ben cemâlin  
Melekler gıbtâ eyler görse hâlin  
Kamer sandım şafakda ben cemâlin

Df-192/218

Muallim İsmail Hakkı Beyin T&T'deki  
kolleksiyonundan yazıldı. *İsmail Hakkı*