

Aksak Sema

1.

Musical notation for the first section, Aksak Sema. It consists of three staves of music in 10/8 time, featuring a key signature of one sharp (F#) and a complex, syncopated melody with many beamed notes.

2. Teslim

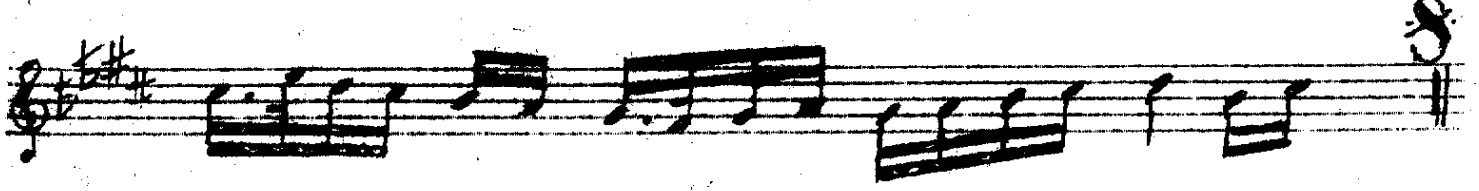
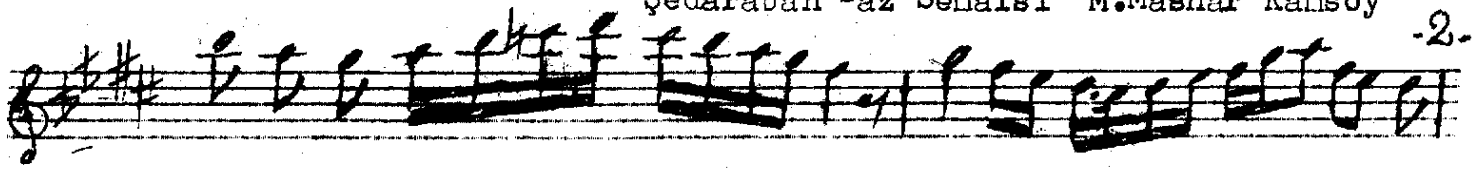
Musical notation for the second section, Teslim. It consists of three staves of music in 8/8 time, featuring a key signature of one sharp (F#) and a melody with some chromaticism. The second staff includes the handwritten notes "Yalnız 2 mi haneye geçerken" and "Normal Kalış".

2. Hane

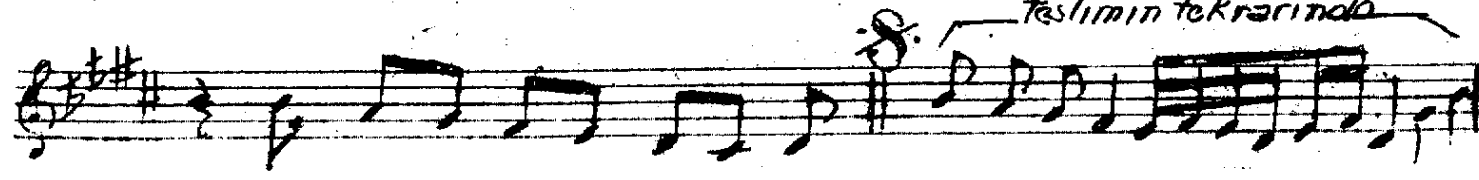
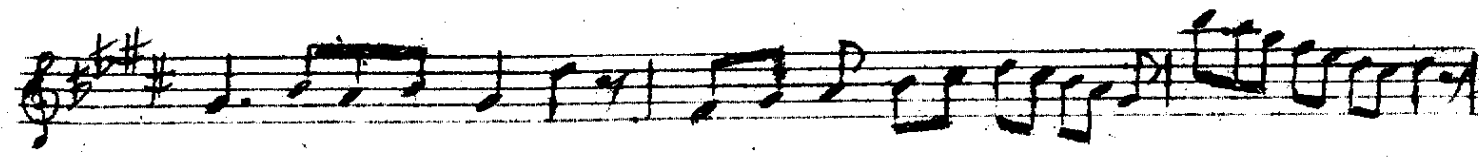
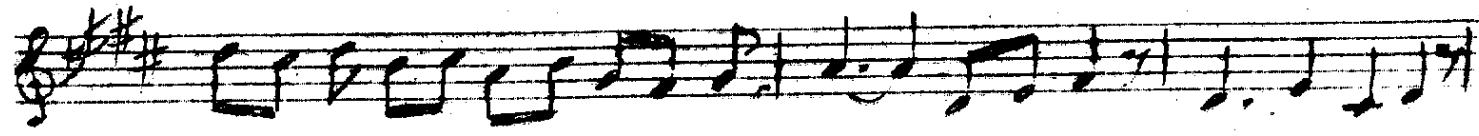
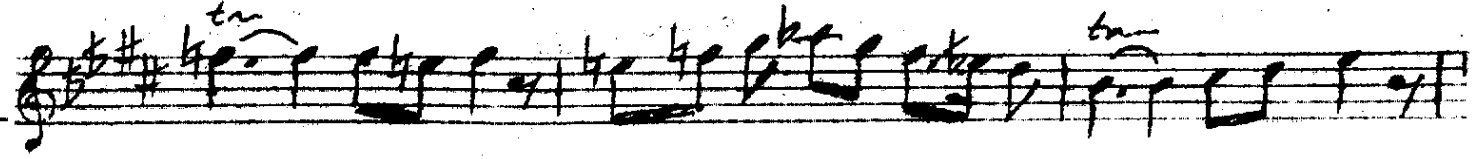
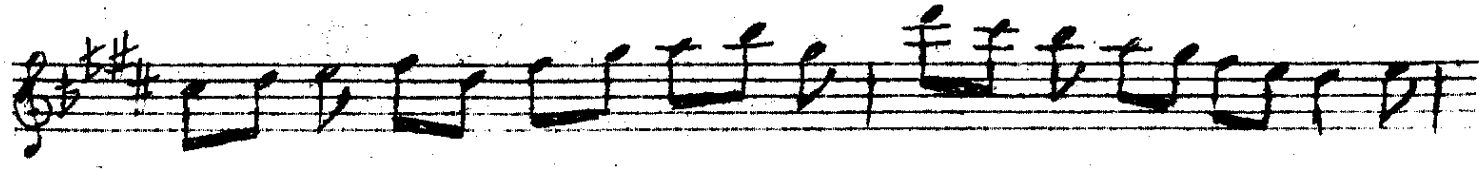
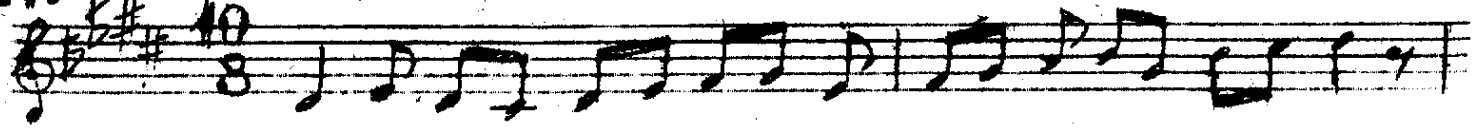
Musical notation for the third section, Hane. It consists of three staves of music in 8/8 time, featuring a key signature of one sharp (F#) and a melody with some chromaticism. The second staff includes the handwritten numbers "1" and "2".

3. Hane

Musical notation for the fourth section, Hane. It consists of one staff of music in 8/8 time, featuring a key signature of one sharp (F#) and a melody with some chromaticism. The staff includes the handwritten dynamic marking "mf".



4. Hane (Curcuna)



Not: 2 nci hanenin iki defa çalınması mecburi değildir.