

# NİHAVEND YÜRÜK SEMÂİ

*Ruhsârına aybetme nigâh ettiğimi*

BESTE: M. NURETTİN SELÇUK

USÛL: YÜRÜK SEMÂİ

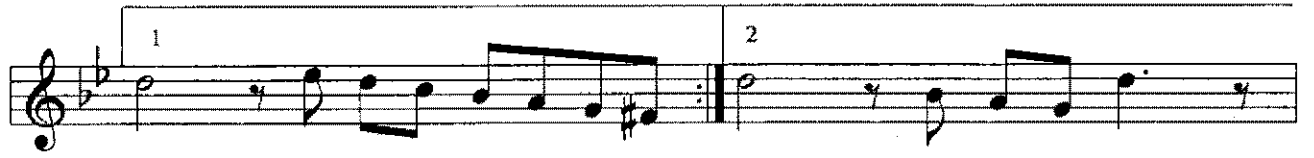
GÜFTE: FUZÛLÎ



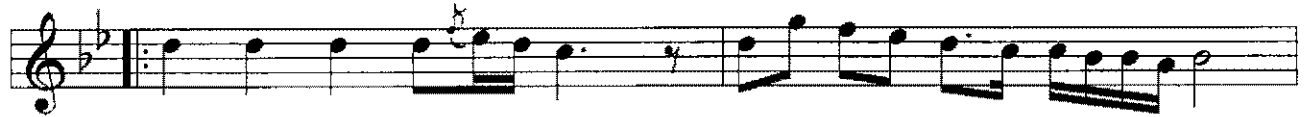
Ruh sâ rı na ay bet me ni gâh



ni gâh et di ği mi



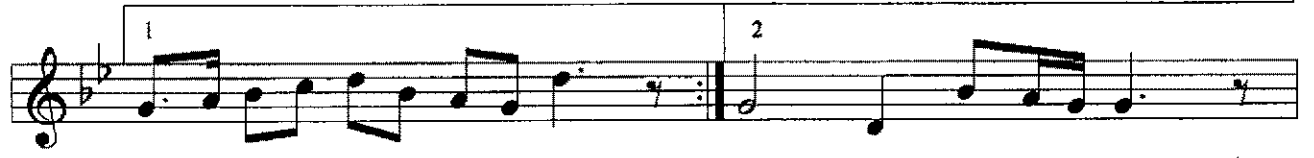
yâr ( saz... ) yâr ( saz... )



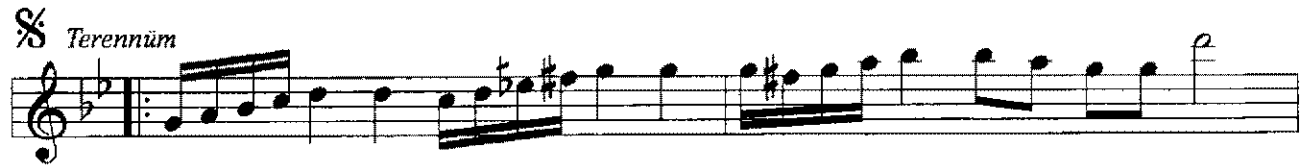
Göz ya şı dö küp nâ le vü ah



ah et di ği mi



yâr ( saz ... ) yâr ( saz... )



Ten nen ni ten nen ni te ne nen  
Yel lel li yel lel li yel lel li ye le lâ



nâ te nedir ney ( saz ... )  
lâ ye le lel li ( saz ... )



Gel ser vi re van gel ( mızrap )



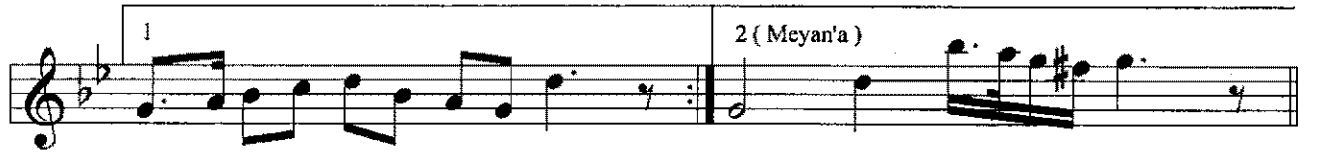
gel ka şı ke man gel ( saz ... ) gel ( saz ... )  
gel dı de ni han



Göz ya şı dö küp nâ mi le şim vü ah  
Af fey le ki bil mi şim gü nâh

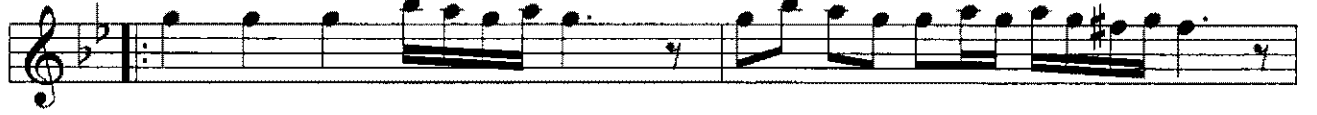


ah et di ği mi  
nâh et di ği mi



yâr ( saz ... ) yâr ( saz ... )  
yâr ( saz ... )

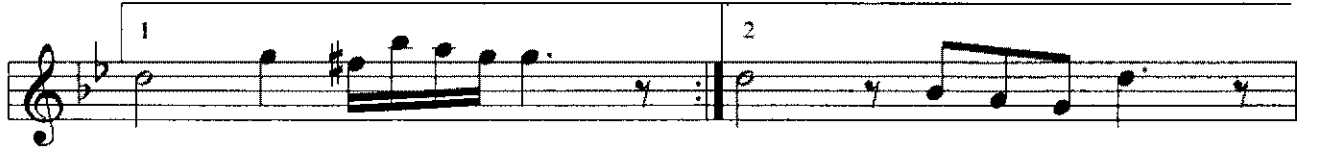
*Meyan*



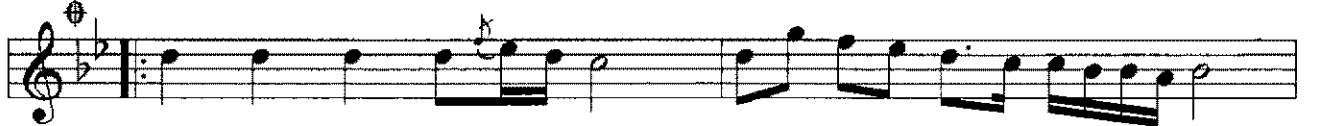
Ey pa di şe hi hû sün



ta rah hüm ça ğı dır



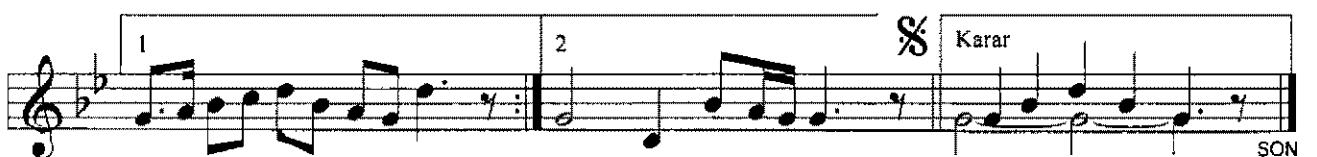
yâr ( saz... ) yâr ( saz... )



Af fey le ki bil mi şim gü nâh



gü nâh et di ği mi



yâr ( saz... ) yâr ( saz... ) yâr ( mızrap )