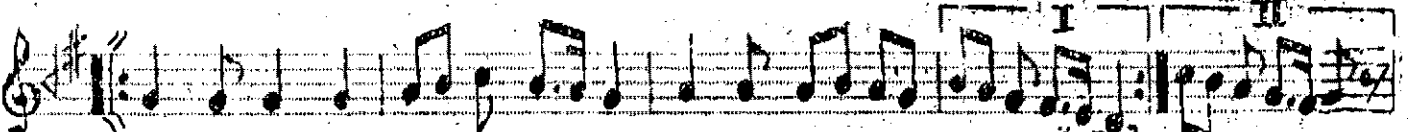
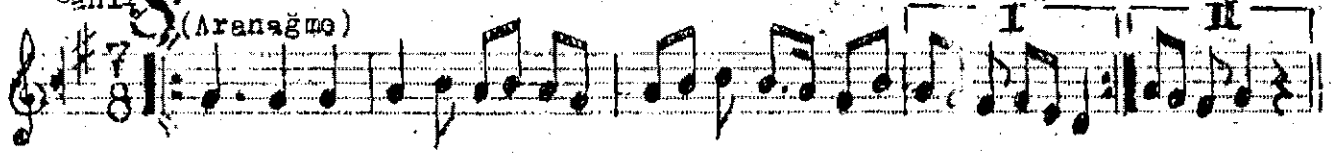


Devrihindî

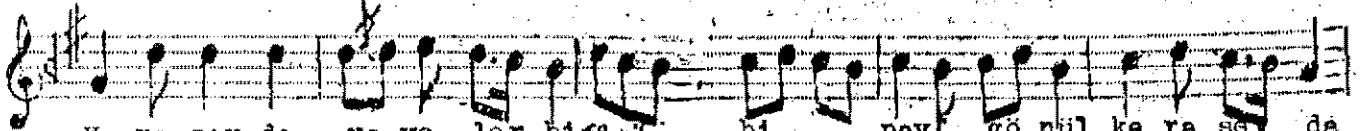
RAST NAKIŞ  
(Gül yüzünde görelî)

M. M. R. S. Selçuk  
Güfte: Bursa'lı Ahmed Paşa

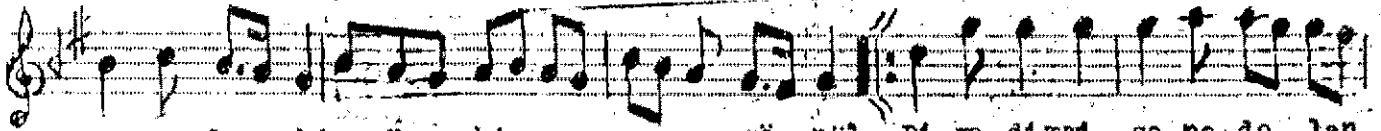
Canlı (Aranâğuş)



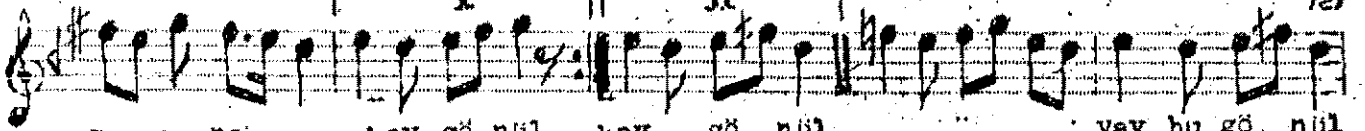
Gül yüzünde görelî zülfü semen say gönül  
Bizi hâketti heva yolunda sev da nîdâlim say gönül  
da nîdâlim



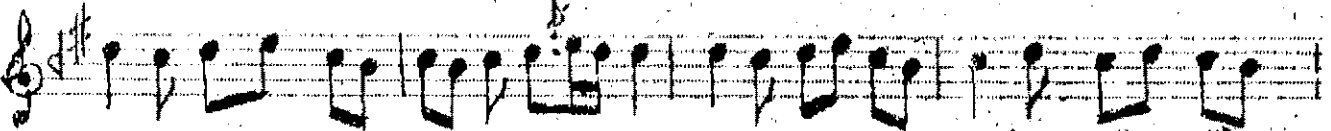
Kara sevdâya yeler birerü bi pay gönül kara sev da  
Paymal eyledi ol zülf-i semensâ nîdâlim paymal ey



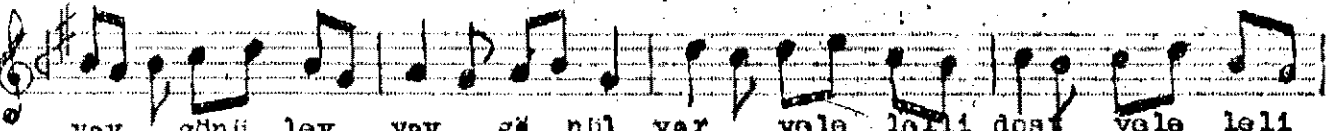
ya yeler birerü bi pay gönül Dîmedim mi saha dolanma vay gönül  
Ayâdi zülf-i semensâ nîdâlim Kul edinmez ki güzeller



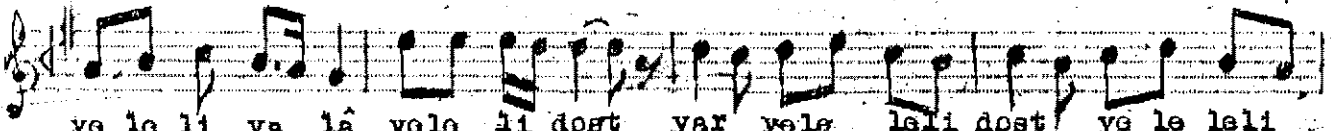
ma ana hay gönül hay gönül vay bu gönül  
bizi il lâ nîdâlim lâ nîdâlim vay gönül



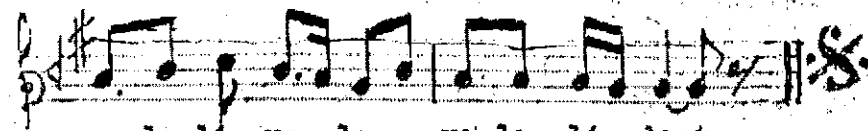
vay gönül vay gönül vay gönül vay bu gönül



vay gönül vay gönül yar yele leli dost yele leli



ye le li ya lâ yele li dost yar yele leli dost ye le li



ye le li ya la ye le li dost

Gül yüzünde görelî zülfü semen say gönül

Kara sevdâya yeler birerü bi pay gönül

Dîmedim mi saha dolanma vay gönül

Bizi hâketti heva yolunda sevda nîdâlim

Paymal eyledi ol zülf-i semensâ nîdâlim

Kul edinmezdi güzeller bizî zîlâ nîdâlim

Vay gönül vay bu gönül vay gönül  
eyvay gönül

Vay gönül vay bu gönül vay gönül  
eyvay gönül