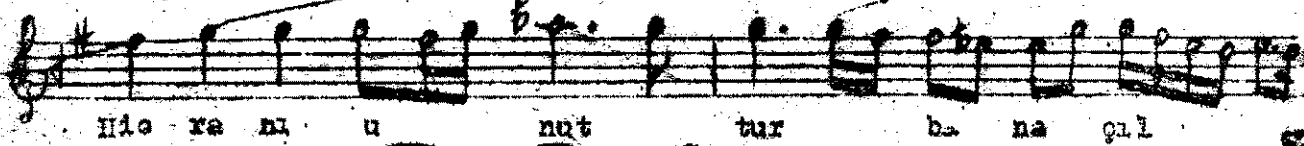
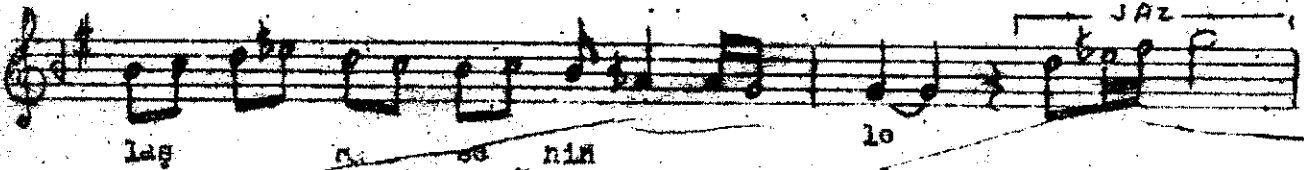
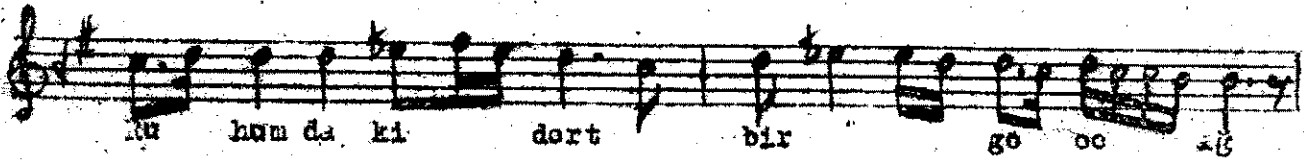
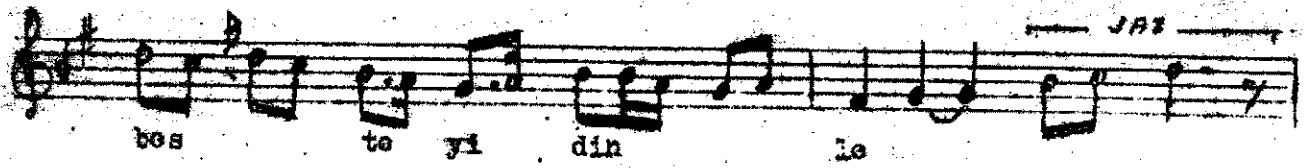
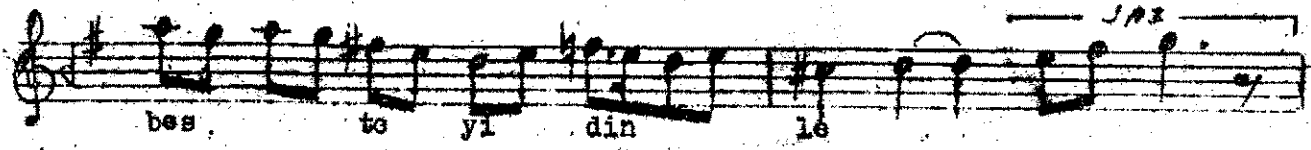
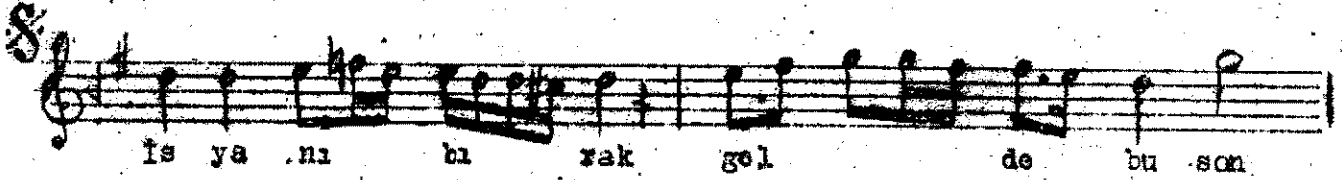
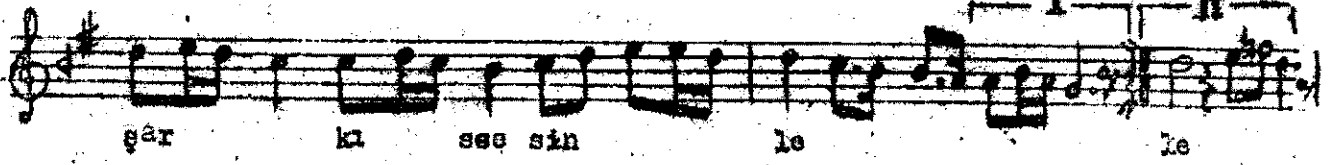
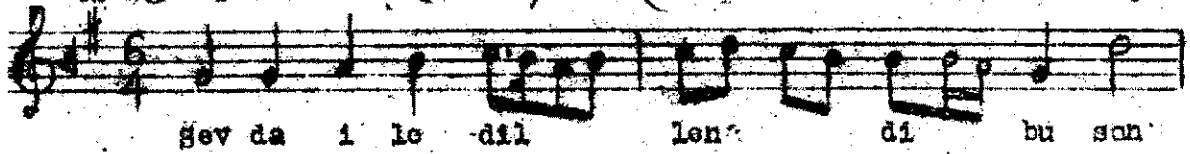


göçün sem-i

Rost Sarki

M.Nureddin Selçuk



Sevdâ ile dillendi bu son sarki sesinle
İsyenî bir-k golde bu son besteyi dinle
Zuhud-ki dort bir göç -çil-şas sesinle
Nisrânî unuttur b-n- çil-şas havasınla
İsy-nî bir-k golde bu son besteyi dinle.