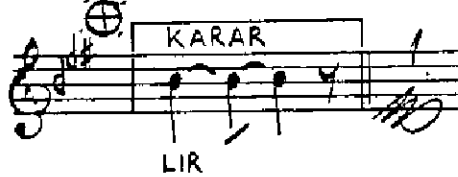
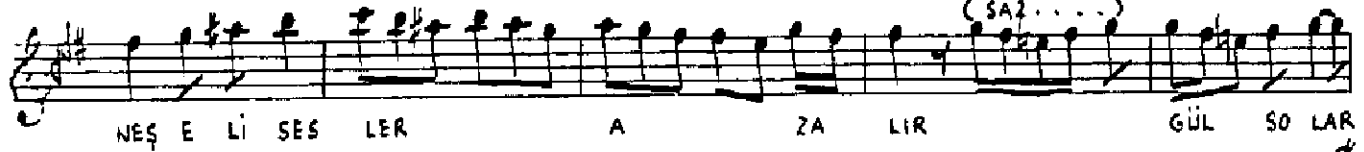
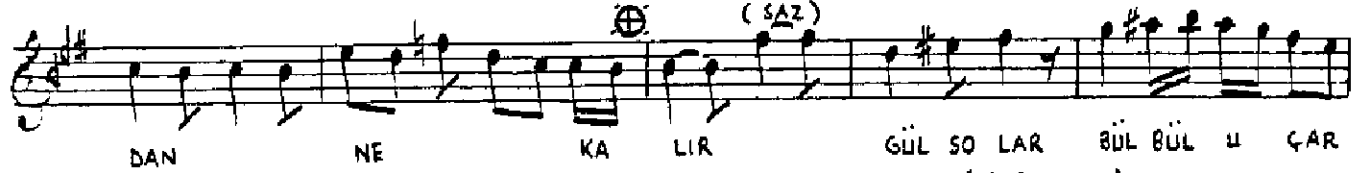


SEGÂH SARKI
BÜLBÜL AHENGİNİ GÜL RENGİNİ

MÜZİK: MÜNİR NUREDDİN SELÇUK
SÖZ: FARUK NAFİZ ÇAMLIBEL

YÜRÜK SEMÂİ

♩ : 420



Aytaç ERGEN

REŞİT ÇAĞIN'DAN ALINMIŞTIR.

BÜLBÜL AHENGİNİ GÜL RENGİNİ HEP SENDEN ALIR
SEN GİDERSEN BU GÜLISTANDA BAHARDAN NE KALIR
GÜL SOLAR BÜLBÜL UÇAR NEŞELİ SESLER AZALIR
SEN GİDERSEN BU GÜLISTANDA BAHARDAN NE KALIR