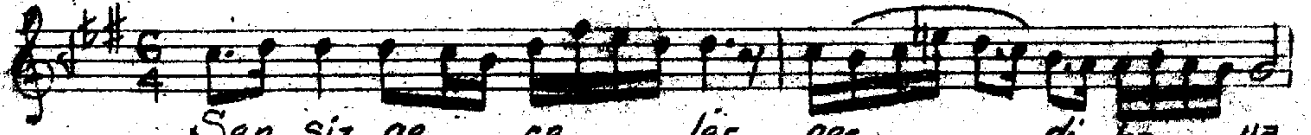


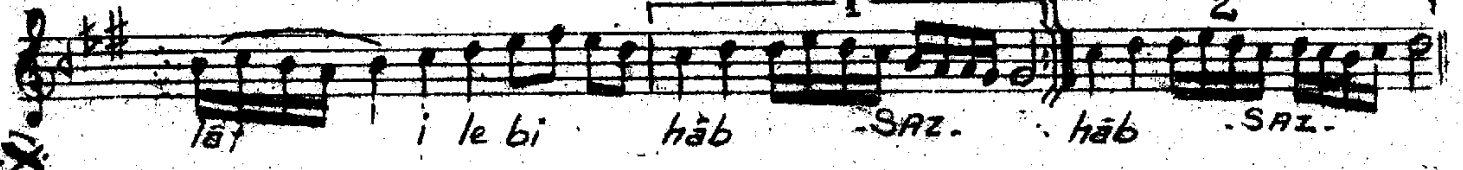
Sengin Semai

Guzinäk Şarkı

Musa Süreyya Bey



Sen siz ge ce lër geç di ha ya



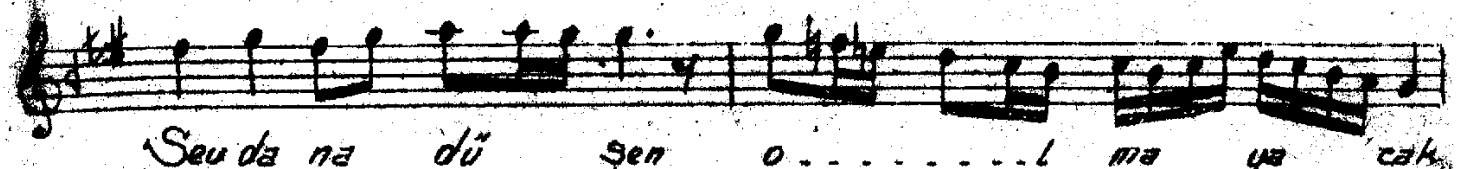
lât i le bi hâb -SAZ- hâb -SAZ-



Gös ter ba na gül çeh re ni ey



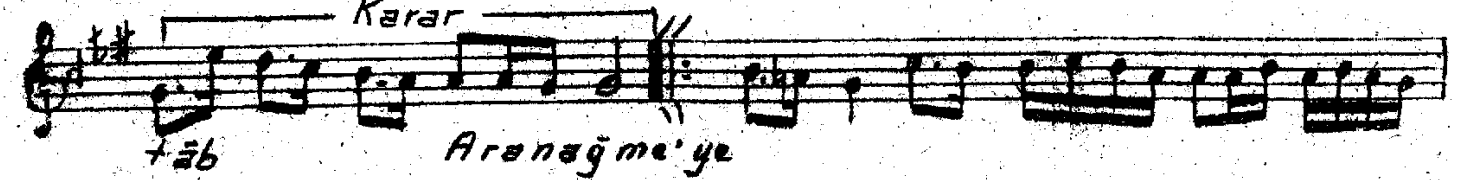
Seu gi li meh tâb -SAZ- tâb -SAZ-



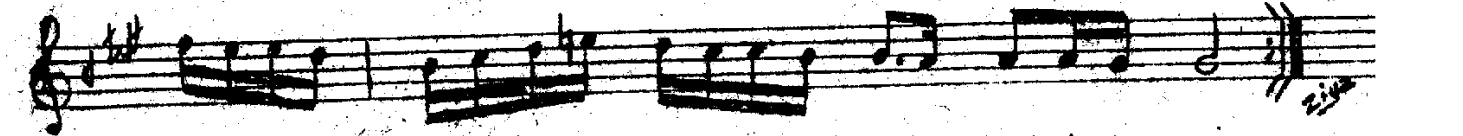
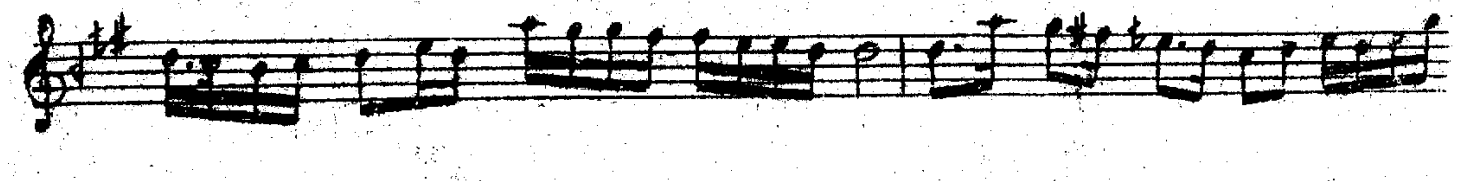
Seu da na dü şen o ..... l ma ya cak



bil ki şî fâ yâb



tâb Ar na ğ me' ye



Sensiz geceler geçdi hayalât ile bihâb  
Göster bana gül çehreni ey seugili mehtâb  
Sevdanz düşen olmayacak belki şifâyâb  
Göster bana gül çehreni ey seugili mehtap...