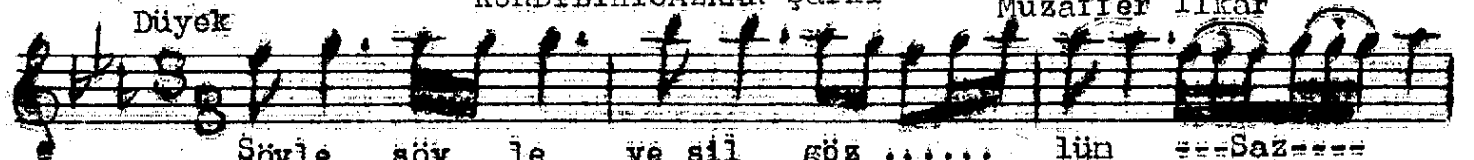


KÜRDİLİHİCAZKÂR Şarka

Muzaffer İlkar

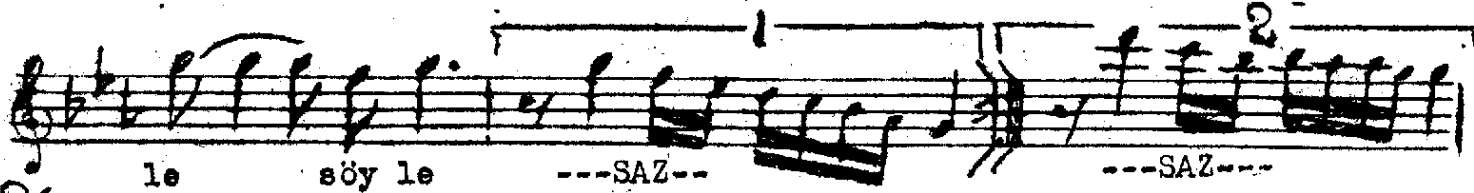
Düyek



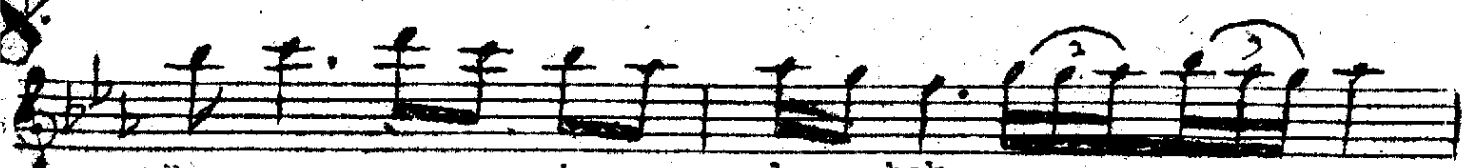
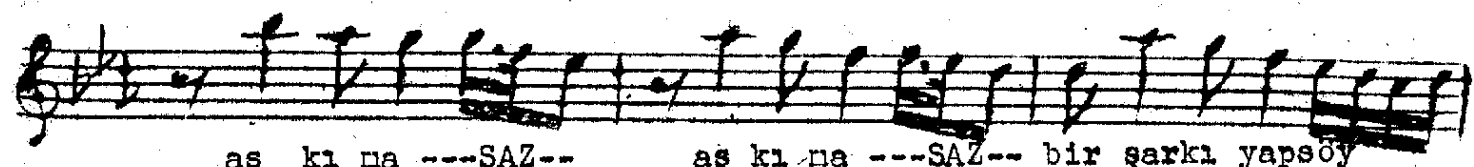
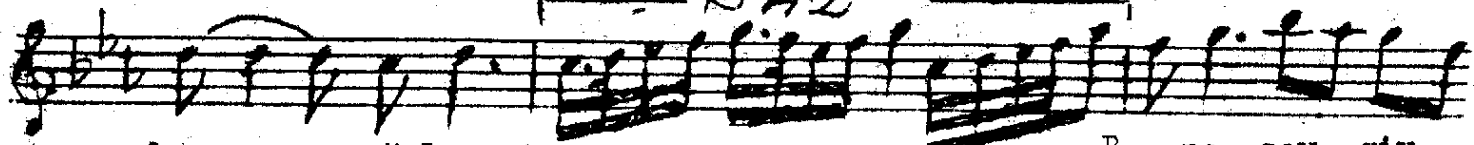
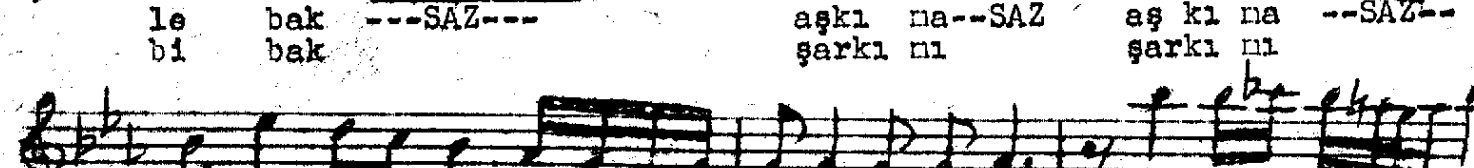
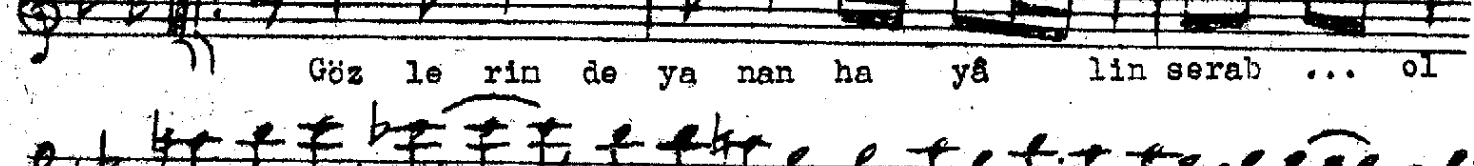
Söyle söy le ye şil göz ... lün ---SAZ---



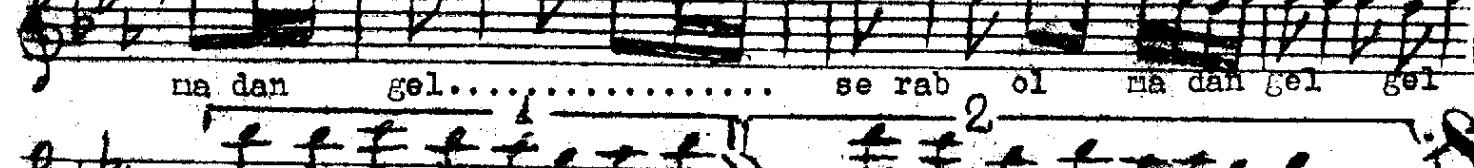
der di ne bir ça re bul söy



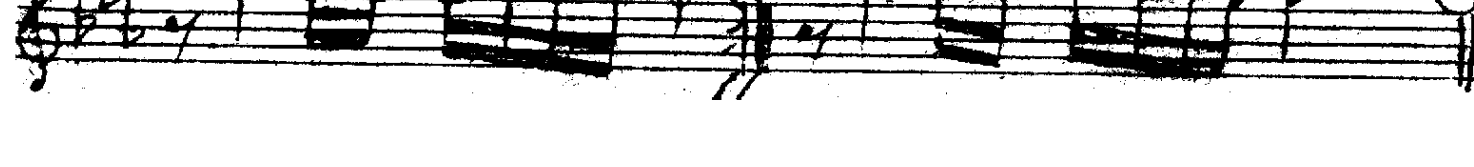
le söy le ---SAZ---

Ba na sev giy le bak ---SAZ---
Ba na ben gi bi bakaş ki na ---SAZ--- aş ki na ---SAZ--- bir şarki yapı söy
şar ki ni şar ki ni ya vaş ya vaş söyle söyle
leBa na sev giy
ba na ben gile bak ---SAZ--- aş ki na ---SAZ--- aş ki na ---SAZ---
bi bak şar ki ni şar ki nibir şar ki yap söy le söy le ---SAZ---
ya vaş ya vaş söy le

Göz le rin de ya nan ha yâ lin serab ... ol



na dan gel..... se rab ol na dan gel gel



na dan gel gel