

NEV-ESER PEŞREVİ

HAFIF

MÜZİK: YUSUF PAŞA

♩ = 96

Three staves of musical notation in 3/4 time, key signature of two sharps (F# and C#). The first staff begins with a treble clef and a key signature of two sharps. The tempo is marked as ♩ = 96. The music consists of eighth and quarter notes, often beamed together, with phrasing slurs.

TESLİM

Two staves of musical notation in 3/4 time, key signature of two sharps (F# and C#). The music continues with eighth and quarter notes, often beamed together, with phrasing slurs.

2. HÂNEYE

3. HÂNEYE

4. HÂNEYE

KARAR

One staff of musical notation in 3/4 time, key signature of two sharps (F# and C#). The staff is divided into four measures, each labeled with a section name: 2. HÂNEYE, 3. HÂNEYE, 4. HÂNEYE, and KARAR. The music consists of eighth and quarter notes, often beamed together, with phrasing slurs.

2. HÂNE

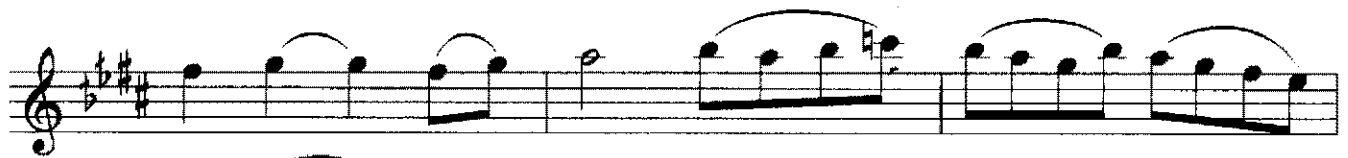
One staff of musical notation in 3/4 time, key signature of two sharps (F# and C#). The music consists of eighth and quarter notes, often beamed together, with phrasing slurs.

One staff of musical notation in 3/4 time, key signature of two sharps (F# and C#). The music consists of eighth and quarter notes, often beamed together, with phrasing slurs.

One staff of musical notation in 3/4 time, key signature of two sharps (F# and C#). The music consists of eighth and quarter notes, often beamed together, with phrasing slurs.

3. HÂNE

One staff of musical notation in 3/4 time, key signature of two sharps (F# and C#). The music consists of eighth and quarter notes, often beamed together, with phrasing slurs.



4. HÄNE

