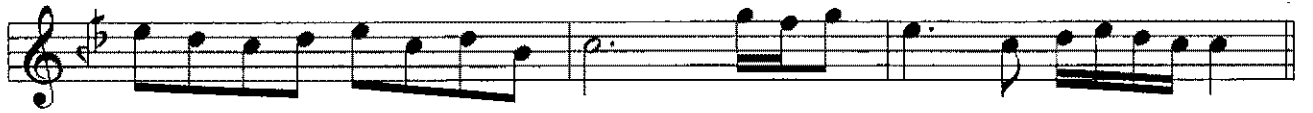


# SABÂ BUSELİK PEŞREV

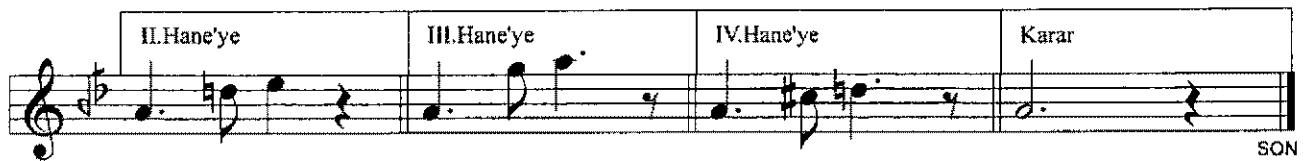
USÛL: DEVR-İ KEBİR

BESTE: NÂ'YI YUSUF PAŞA

*Birinci Hane*



*Mülâzime* %



*İkinci Hane*

The second staff system consists of six staves of music. The first staff begins with a treble clef, a key signature of one flat (B-flat), and a common time signature. The melody is written in a single line. The second staff continues the melody with a key signature change to two flats (B-flat and E-flat). The third and fourth staves feature more complex rhythmic patterns, including sixteenth and thirty-second notes. The fifth staff continues the melodic line. The sixth staff concludes the system with a double bar line and a repeat sign.

*Üçüncü Hane*

The third staff system consists of six staves of music. The first staff begins with a treble clef, a key signature of two flats (B-flat and E-flat), and a common time signature. The melody is written in a single line. The second staff continues the melody. The third and fourth staves feature more complex rhythmic patterns, including sixteenth and thirty-second notes. The fifth staff continues the melodic line. The sixth staff concludes the system with a double bar line and a repeat sign.

*Dördüncü Hane*

The image displays a musical score for a piece titled "Dördüncü Hane". The score is written on six staves, all using a treble clef and a key signature of one sharp (F#). The time signature is 2/4. The music is characterized by a melodic line with various rhythmic patterns, including eighth and sixteenth notes, and rests. The notation includes sharp signs for F# and natural signs for F. The piece concludes with a double bar line and a fermata symbol.