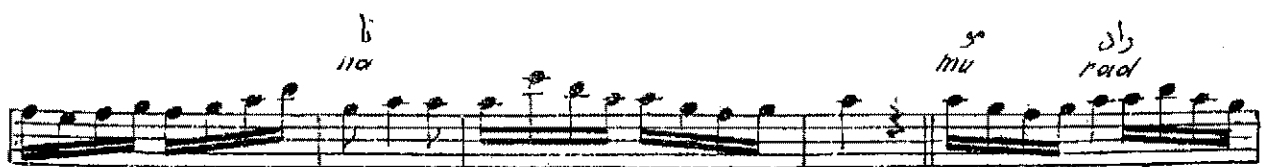
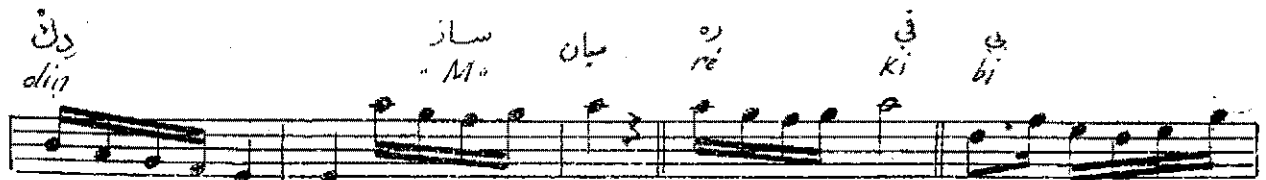
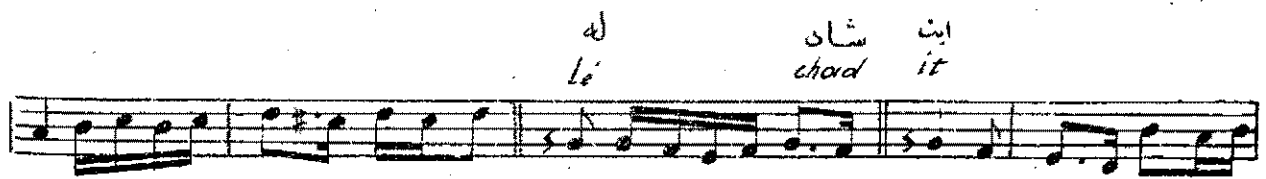
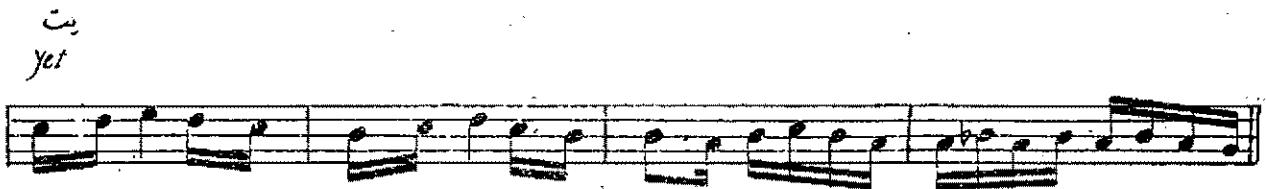
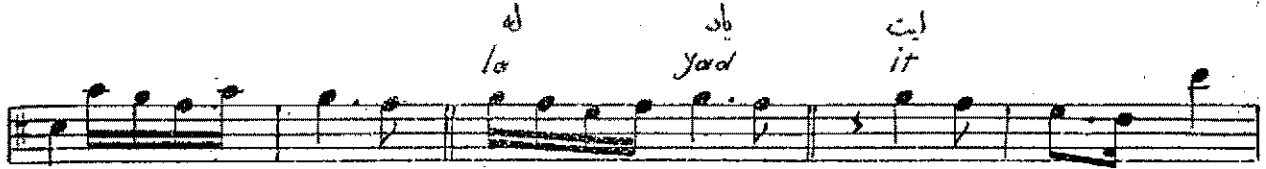
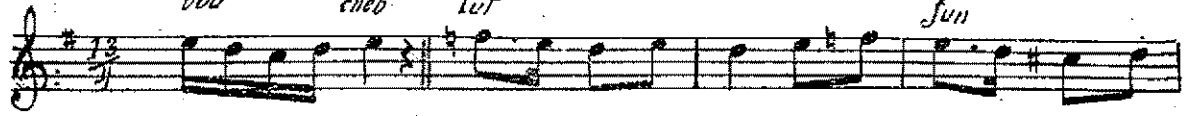


مبینی عینان سرفی

اصولی دوز روان

نفران آغانک



مقامی اسکندر

ایست  
it

دین  
din

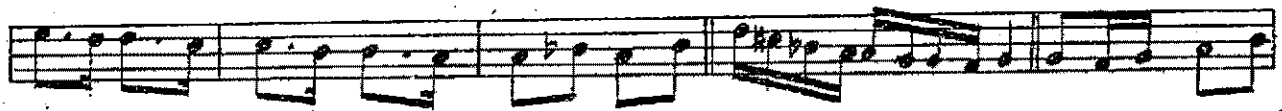
آ  
a

مان  
man

نقارث

A musical staff with a treble clef and a key signature of one flat. The melody consists of quarter and eighth notes. Above the staff, the lyrics are written in Persian and Latin: 'ایست it', 'دین din', 'آ a', and 'مان man'. The staff ends with a double bar line and a fermata.

آهنگه  
coda

A musical staff with a treble clef and a key signature of one flat. The melody continues with quarter and eighth notes.A musical staff with a treble clef and a key signature of one flat. The melody continues with quarter and eighth notes.A musical staff with a treble clef and a key signature of one flat. The melody continues with quarter and eighth notes.A musical staff with a treble clef and a key signature of one flat. The melody continues with quarter and eighth notes. A bracket labeled '1 12' spans the final two measures of the staff, indicating a first ending.