


# NEVESER PEŞREV

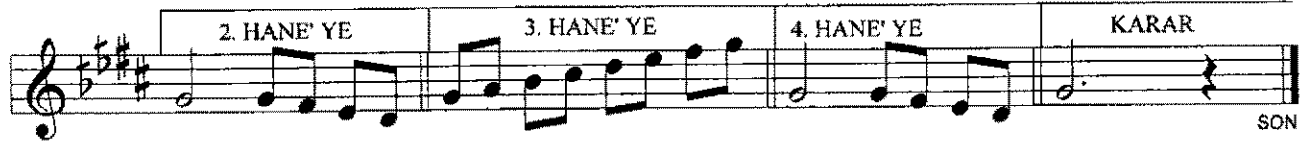
USÛL: BEREFŞAN

BESTE: TANBURI NUMAN AĞA

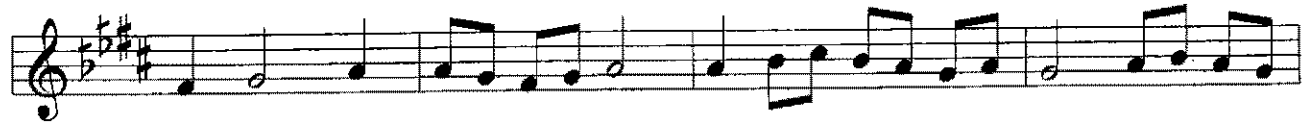
*Birinci Hane*



*Mülâzime* 



*İkinci Hane*



Üçüncü Hane



Musical notation for Üçüncü Hane, consisting of four staves. The key signature is B major (one sharp) and the time signature is 4/4. The notation includes various rhythmic values such as quarter, eighth, and sixteenth notes, along with rests and accidentals (sharps and flats). The piece concludes with a double bar line and a repeat sign.

Dördüncü Hane



Musical notation for Dördüncü Hane, consisting of four staves. The key signature is B major (one sharp) and the time signature is 4/4. The notation includes various rhythmic values such as quarter, eighth, and sixteenth notes, along with rests and accidentals (sharps and flats). The piece concludes with a double bar line and a repeat sign.