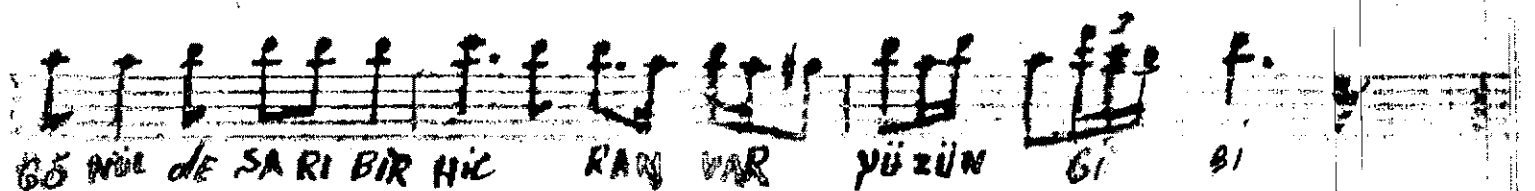
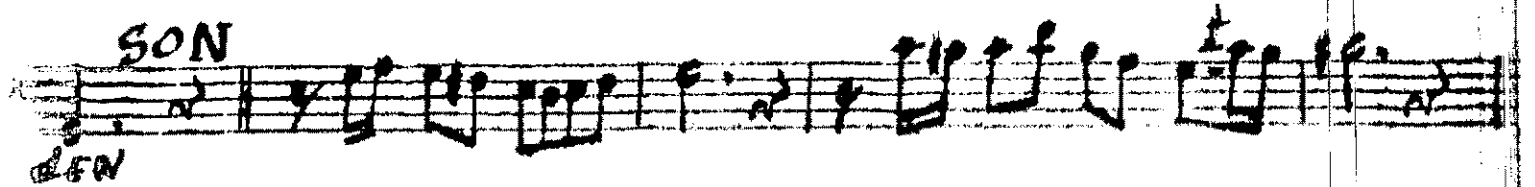
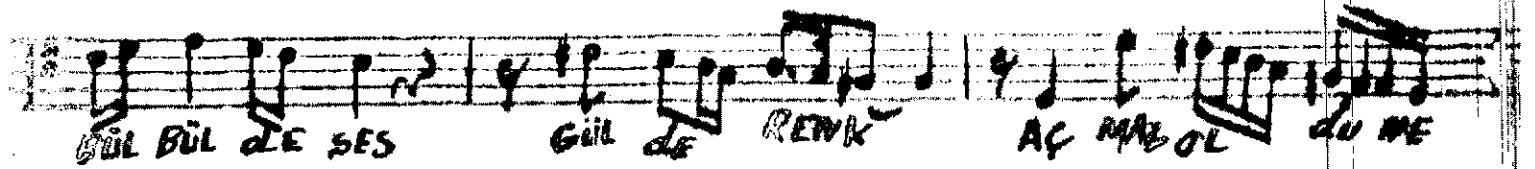
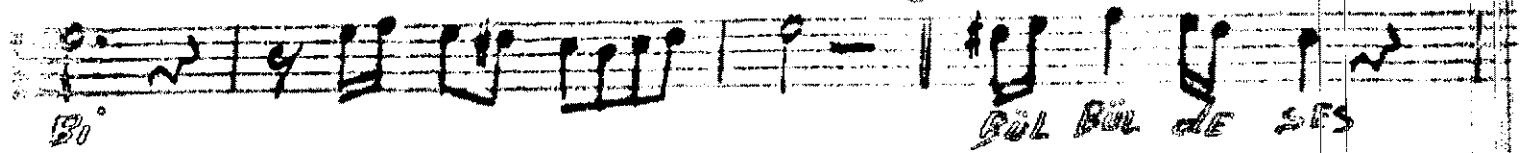
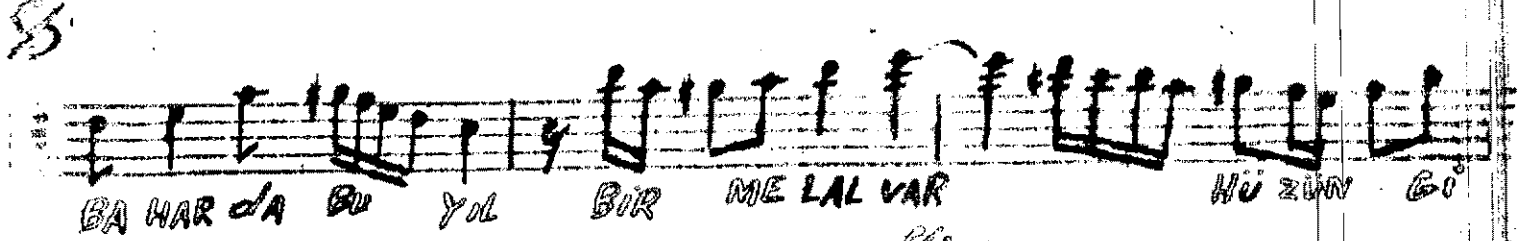
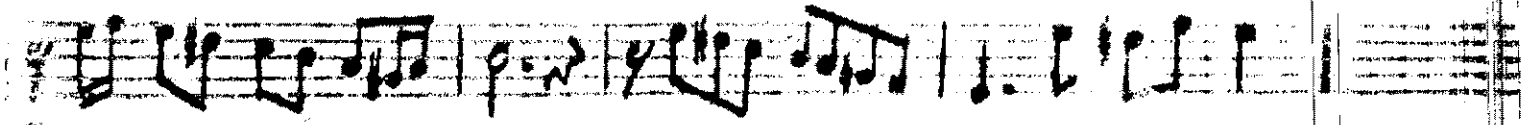
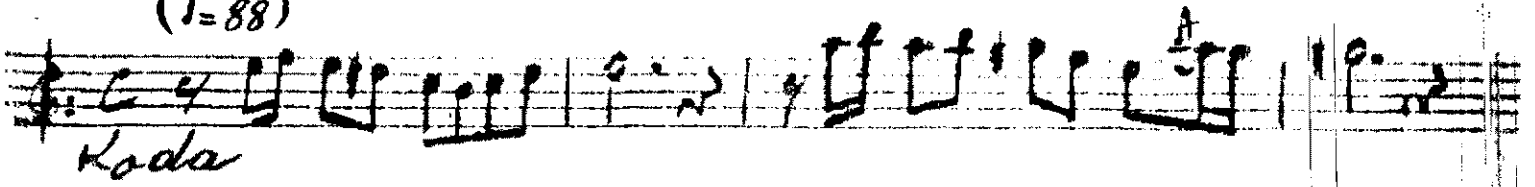


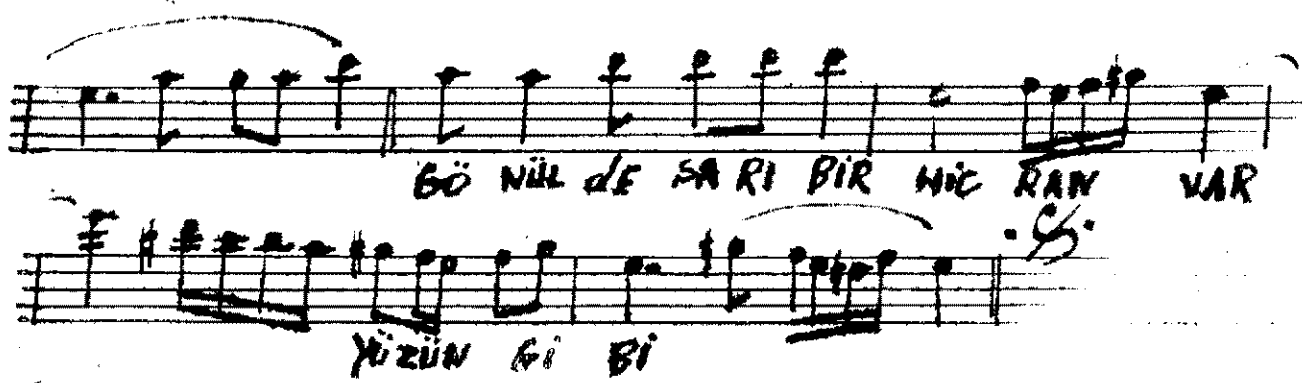
düyek

Suzidil Saade

R. elhuttu

(1=88)





GÖ NİL DE SA RI BİR NİC RAN VAR
YÜZÜN Gİ Bİ

Bakarda bir melal var yüzün gibi
Bülbiilde ses gülden renk aymaz oldu neden
gönülden san bir hicran var yüzün gibi
Neharat