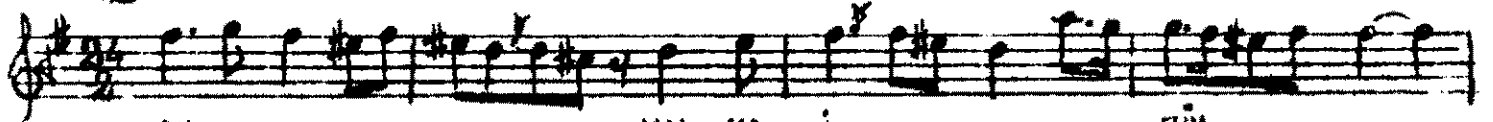


EVİŞ BESTE

Gençer

Halka-i zülf-i aşahı farkolunmaz dîmden

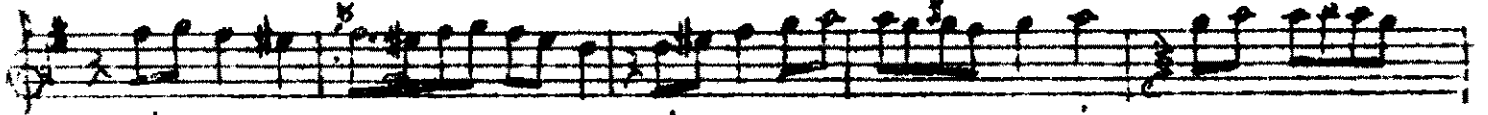
Rauf YEKTA BEY



AH
AH
AH

HAL - KA - İ
ÇOK E - Sİ -
BEK - LE - ŞEK

ZÜL -
Rİ -
KÜ



Fİ
VA
YI

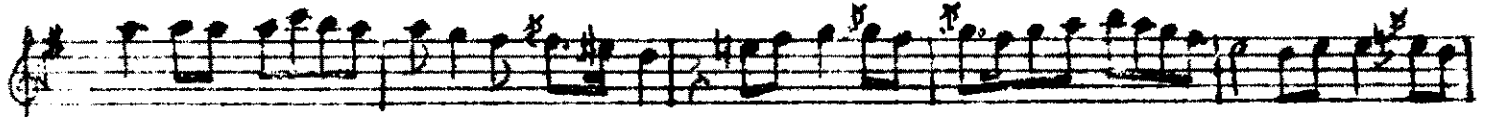
Fİ
VAK
YI

Sİ
Gİ -
Nİ
YA
RU
VAK



Hİ
Hİ
Tİ

FAR - KU
Â - Şİ -
SUB - HA



LUN -
KI
DEK

MAZ
NA
AK -

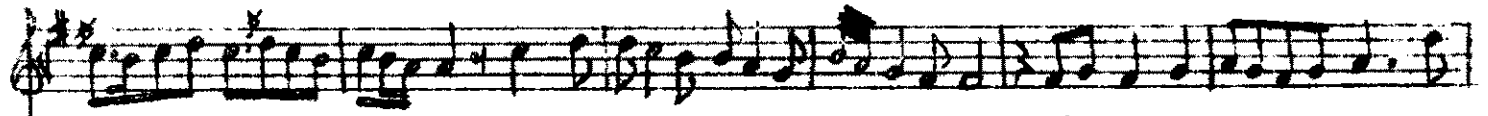
DA
KA
SA

DA
KA
SA



DAM - DAN
KAM - DAN
SAM - DAN

ÖM. KÜM CA - NİM A -



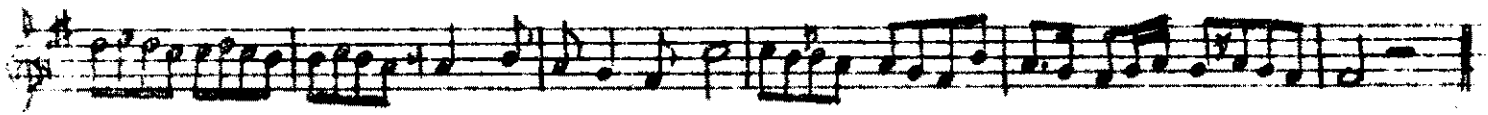
MAN

A - MAN

FAR - KO - LUN -
Â - Şİ - Kİ
SUB - HA DEK

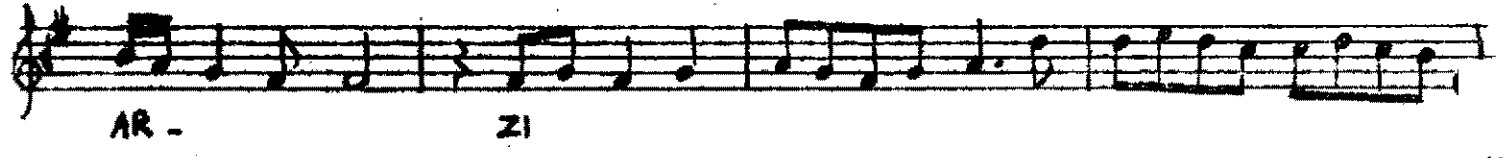
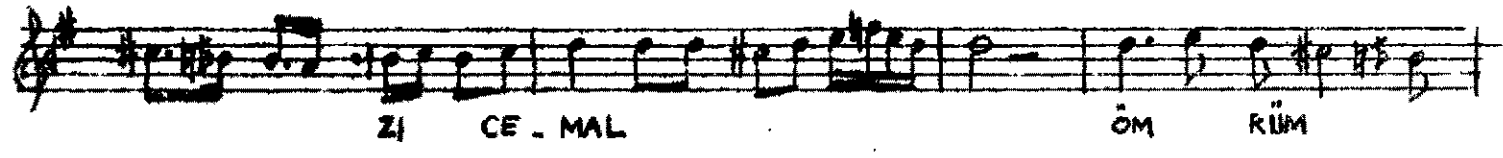
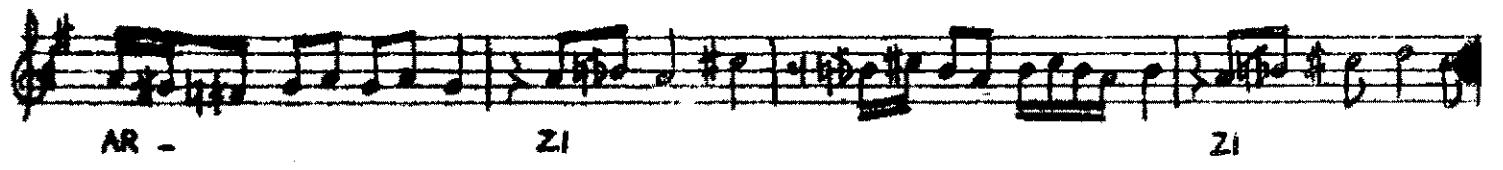
MAZ
NA -
AK

DA
KA
SA



DAM - DAN
KAM - DAN
SAM - DAN

VAY
VAY
VAY



Halka-i zülf-i siyahı farkolunmaz dâmdan
Çok esir-i var gürûh-i âşık-ı nâkâmdan
Gün gibi âyâ o meh rû ede mi arz-ı cemâl
Beklesek küyini vakt-i subha dek akşamdan