

YEGAH PEŞREVI

Rauf Yektâ Bey

The image displays a musical score for the piece "Yegah Peşrevi" by Rauf Yektâ Bey. The score is written in G major (one sharp) and 2/4 time. It consists of 12 staves of music. The notation includes various rhythmic values such as quarter, eighth, and sixteenth notes, as well as rests. There are several dynamic markings, including "2 Hane." on the seventh staff. The score features several ornaments, such as a triplet of eighth notes on the second staff and a grace note on the fourth staff. The piece concludes with a final cadence on the twelfth staff.

3. Hane.

Baş a geçmek için KARAR

Eya... yi neş... yi hoş ne üa... fu ta di der... Saz...
 yi ki dil da ru dil ho si... ne yü a lem gi rif ti did...
 ya ri hey sul... ta ni men...
 hey yi hey hün... ka ri men...
 dem... mi di şü tü ker... zi ta ni da yi aş... Saz...
 mü de mi ser di mi ke si... ki zi ney kes ti a te si...
 ya ri hey yi sul... ta ni men...
 hey yi hey hün... ka ri men... ka ri men...
 Bu... is... ti der de mi...
 zi Teb ri... zi la ce tem...
 ya ri hey sul... ta ni men...
 hey yi hey hün... ka ri men

bes . . . dil . . . ki mi . . . nü va . . .
 . . . zi . . . ez hüs . . . nü ez . . . ke si
 yā . . . ri hey sul . . . ta . . . tu men . . .
 . . . hey . . . yi hey . . . hün . . . kâ . . . rî men
 enni der . di li her kes ki e zin . . . aş . ki e ser
 nist tü eb . ri be ru . kes . ki be cüz . . .
 has . mî ka mer . . . nist der . su . re ti her
 kes . ki e zan . . . rengi ne di . . . di
 mi den . tü be tah . ki . ki ki ez . . . cin . si be ser . . .
 nist e zan . . . tu zi . ki ya . . . ri . men
 haya . . . les . ker . di mi h . . . ma . nem besz . . . ş . di
 uü iş . . . rer ha me ya . . . ni . dil . ki mi h . ma nem

Bezev . . ki aş . kiruh . sa reş zi leb . ha . yi
Se ker . . ba . reş cü nan . . a . şüf te vü . . mes tem
ki ser . ez . pa . ne mi . da . nem ah yâr . . .
yâr yâr . yüre . ğim yâr
yâr . . yüre . ğim . del . ci ğe . rim . . gör ki ne . ler
var ya . re ha . ber var
mer . . da . . ni ra . hi aş ki ha dem bi . .
ri ya . ze nend hey hey . . hey ca . ni men
ver dem ze nen . di ez
re hi sid . ku sa fa . ze nend hey
hey ca . . ni men der . . bi . . ne va yı et
li me a . ni . cü bul . bü län hey hey

hey ca . ni men der . . . her . . . nefes . besa . .

. . . zi hüner . sad neva . ze mend hey . . . hey . . .

hey ca . ni men . . . dü . di . . . de baz . . . kün . . .

. . . çü neyen der . he va . yi dost ta . . . tu . . .

se net . se ved ki de mi . dil küca . zenend

hey hey yi hey ca ni men

Finçici Selâm

Exfer
Ah Ah sul ta der men ni bi me ni de mi

ah ah sul men ta zin ni de me ni se uem

ah ah en der di lü ca se ued
yek can ci

can ued sad ma ni meni
ca ni ni meni

Ah i ma ni meni

Terennüm.

"Üçüncü Selâm"

Devrikebir.

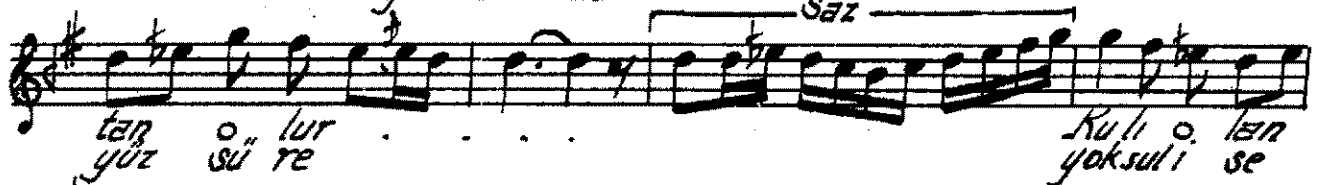
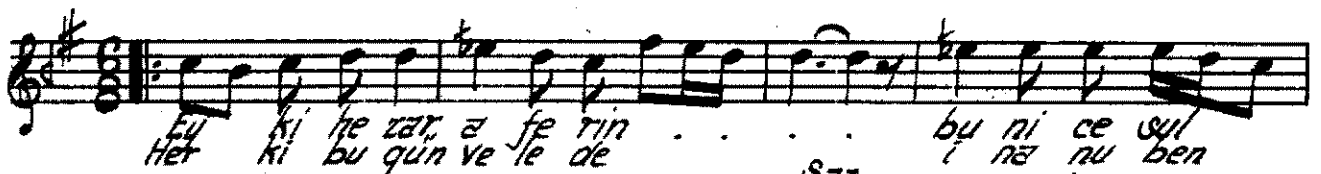
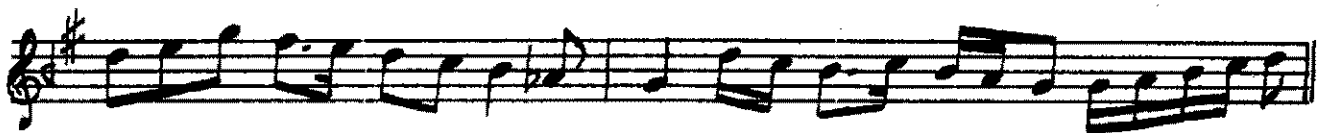
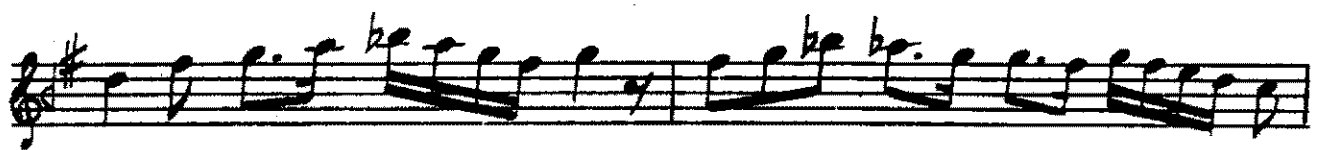
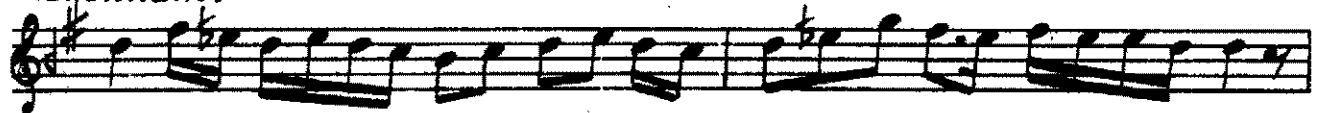
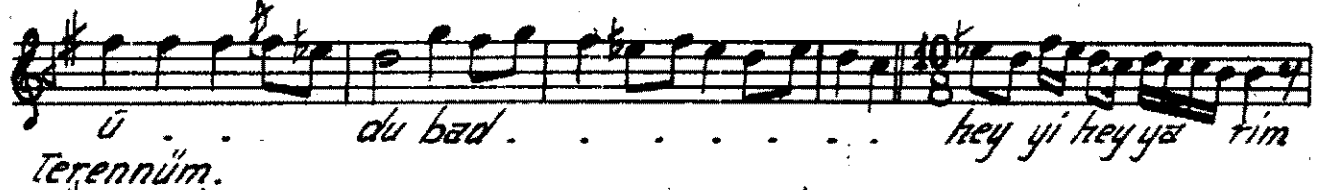
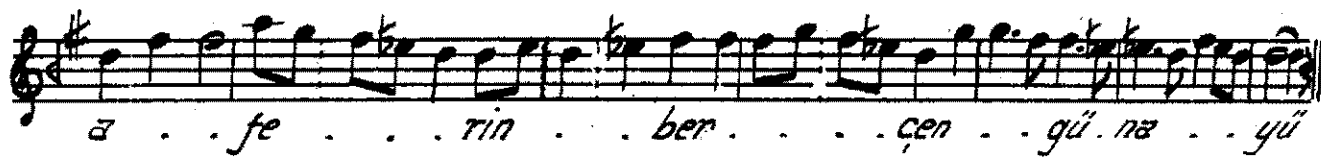
Fu - hu - da . . . ez - â - si - kan . . . hoş . . . mi
 Her - ki - gü - yed - ki . . . ha - lâ - san . . . mi

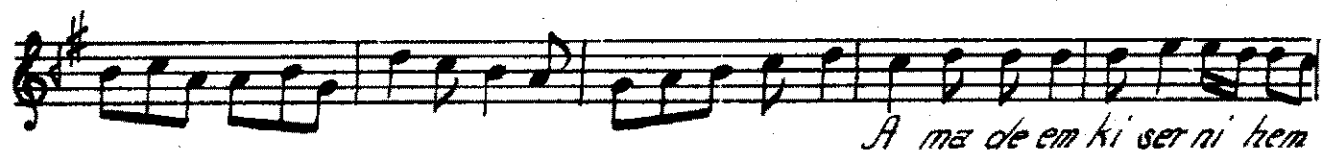
nu . . . dü bad . . . beli ya - ri - men . . .
 dih . . . zi ask . . . be li - ya ri men

â . . . si - dü . . . kan . . . ta - ber . . . â . . . ki - bet . . . mah
 in . . . 'dü . . . â . . . ber . . . â . . . su - mân . . . mer

mu . . . dü bad . . . be li - ya ri - men . . .
 dü . . . dü bad . . . be li - ya ri men

sem - si - feb . . . ri . . . zi - ne - va . . . yi

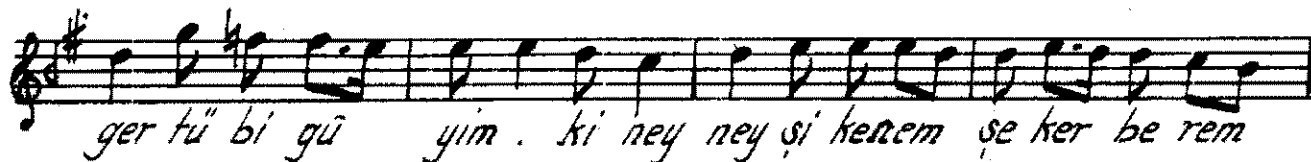




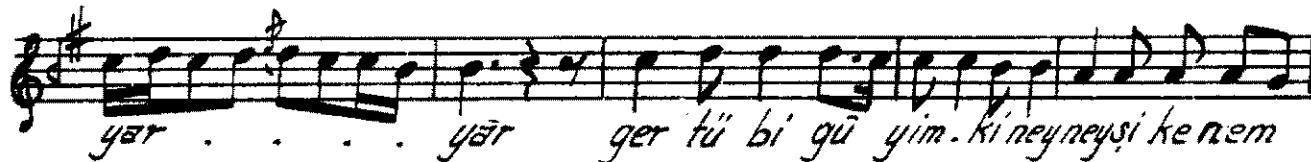
A ma de em ki ser ni hem



aş ki tû ra be ser be rem yâr yâr



ger tû bi gû yim . ki ney ney şî ke nem se ker be rem



yâr yâr ger tû bi gû yim . ki ney ney şî ke nem



se ker be rem yâr yâr bâ di sa bâ selâmî ma



ca ni bi şem sũ dim re san yâr yâr



gez na za rî ka bu li o ra hi be ka be ser be rem .

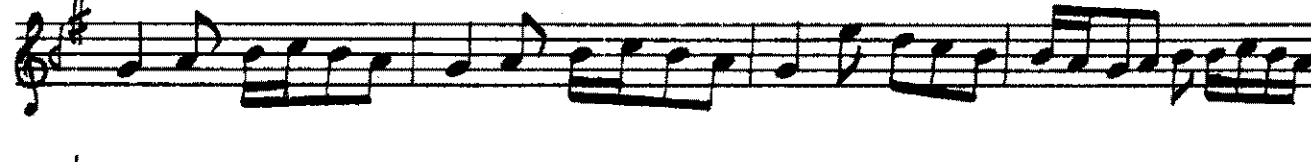


yâr yâr gez na za rî ka bu li o



ra hi be ka be ser be rem yâr yâr

Terennûm.



tû nu ri di de i can ya



dũ di de i ma i ki şu le şu le be nu . ri be ser deref

za i ki şule şule be ru . ri be ser deref zai

E. zan ze man ki cü ney . bes te em ke mer joi set

ha ra re tis ti de ru ni dil ez se ker ha i

ha ra re tis ti de ru ni dil ez se ker ha i

ya ri ya ri yar . . . ah ya ri men yâr dost . .

dost ah ya ri men yâr ah . ya ri men

ya ri me ra dost ya ri men ya ri me ra ah ya ri men uay
Terenüm.

Ey

nağ me i nâ yi kib ri ya Mev lâ na

yâr yâr ya ri ya ri men Suzi di li ih

ua ri sa fa Mev lâ na yâr ya

yā ti yā ti mēn mak sud . bi ze nā yū neva dan sen

 sin yār . . . yār . . . yā ti ya ti men ā

 va ze i hak ban ki hu da Mevlā na . . . yar . . .

 yār . . . yā ti ya ti mēn dost . . . dost . . . ya ri ya ri mēn

Dördüncü Selâm

Evfer.

 Ah . . . sul ta ni meni

 Ah der men bi de mi

 ah . . . sul ta ni meni

 ah men zin de şe vem

 ah . . . en der di lü can

 ah yek can ci şe ved

 can ved . . . ma ni . . . me ni

 ved . . . ca ni . . . me ni

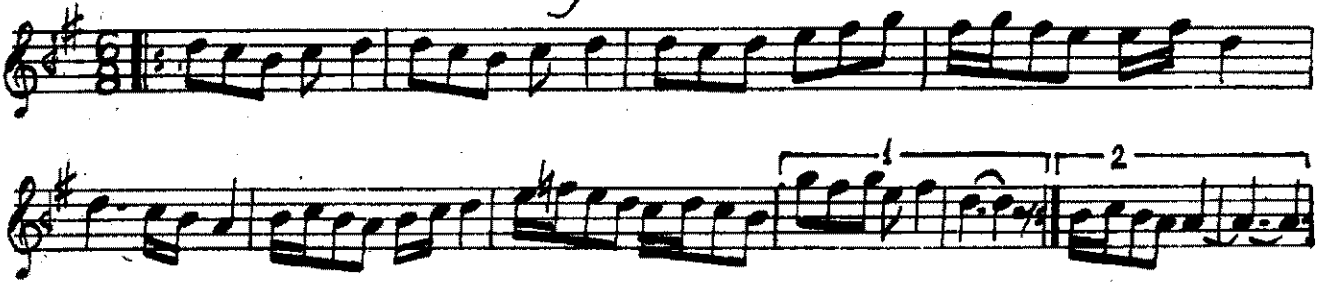
 Ah . . . i ma ni . . . meni

Son Pesrev.



Musical notation for *Son Pesrev*, consisting of six staves of music in treble clef with a key signature of one sharp (F#). The first staff is in 4/4 time, the second in 3/4, the third in 3/4, the fourth in 3/4, the fifth in 4/4, and the sixth in 4/4. The notation includes various rhythmic values, accidentals, and phrasing slurs.

Son Yürük Semai.



Musical notation for *Son Yürük Semai*, consisting of two staves of music in treble clef with a key signature of one sharp (F#). The first staff is in 8/8 time, and the second is in 8/8 time. The notation includes various rhythmic values, accidentals, and phrasing slurs with first and second endings.