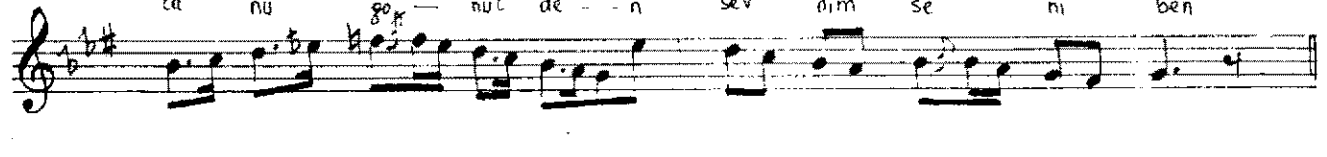
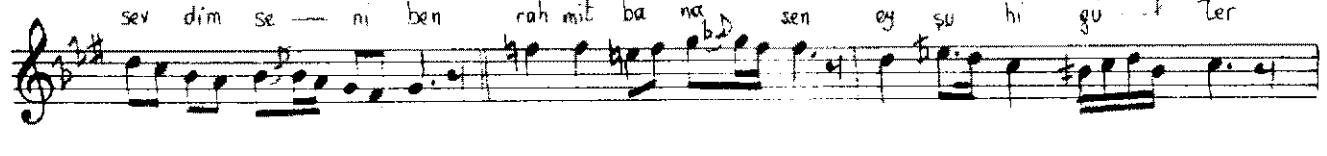
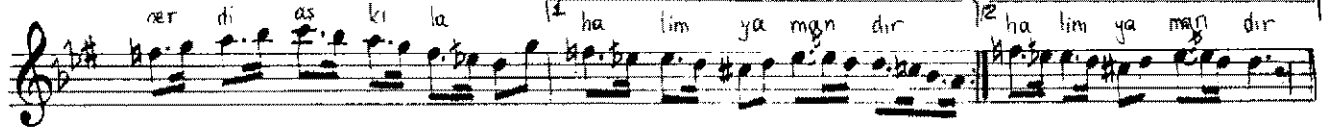
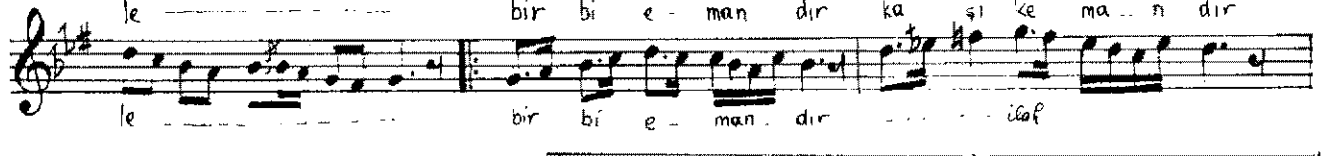
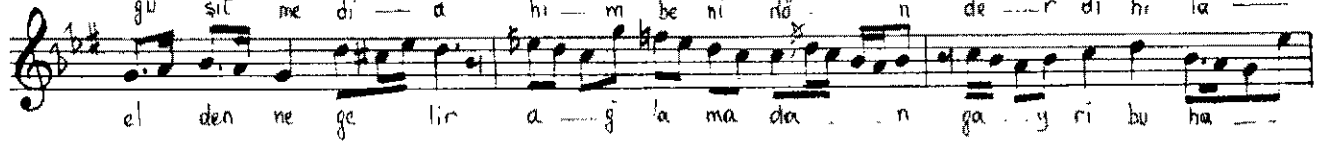
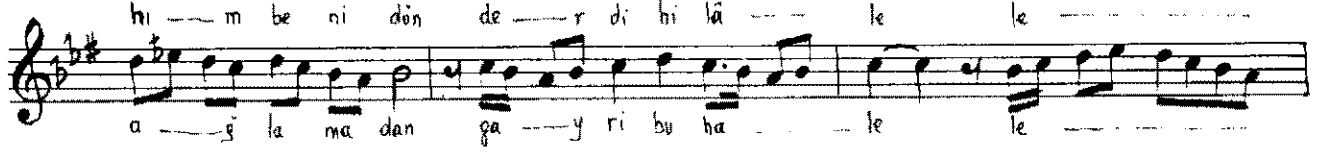
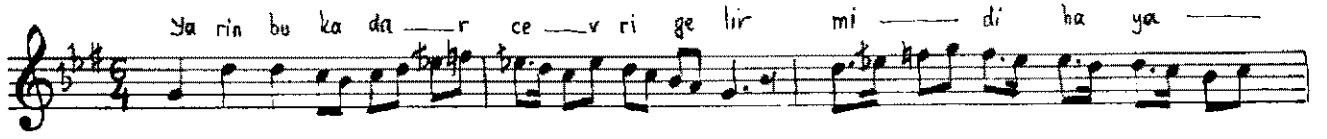


(Nihaverud) makamında yürük semâi
Ser müezzîn Rifat Bey'in

[♩=72]

Mirâk
Semâi



(Meyan)

Rü ya da bi — le pa — yi ni pus e — t me ği gö — r



me — m | 2. me — m : 8.



Yârin bu kadar cevri gelir midî hayâle
Gûş etmedi âhım beni dönderdi hilâle
meyanhane
Rüyada bile pâyini pusetmeği görmem
elden ne gelir ağlamadan gayri bu hâle
terennüm
Bir biemandır kaşı kemandır
Derdi aşkıyla hâlim yamandır
Rahmit bana sen ey şuh-i gülder
Cânü gönülden sevdim seni ben