

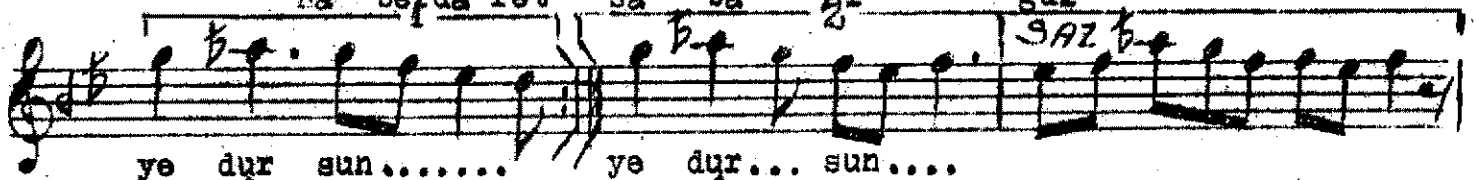
Curcuna

(Hayal-i yare degme girye dursun)

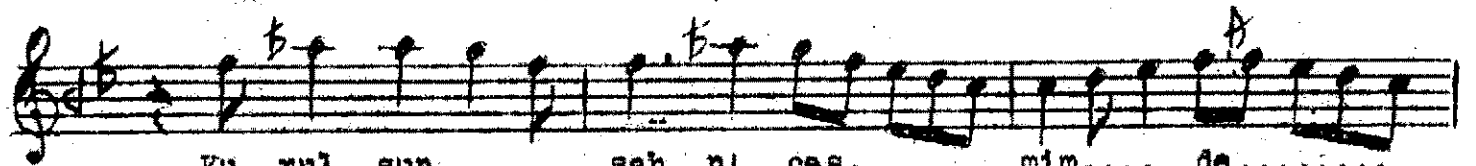
Rifat Bey



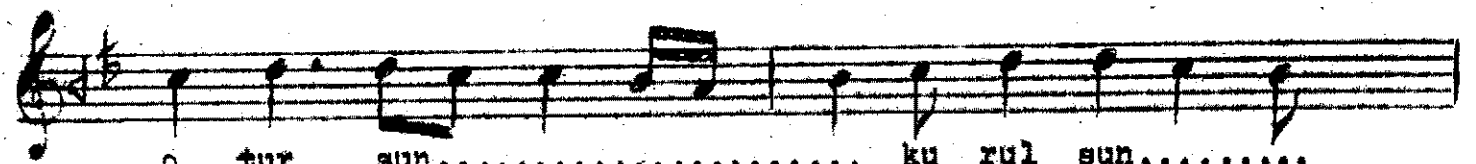
Ha ya li ya re deg me gir.....
Ha beyda ret sa ba al gul



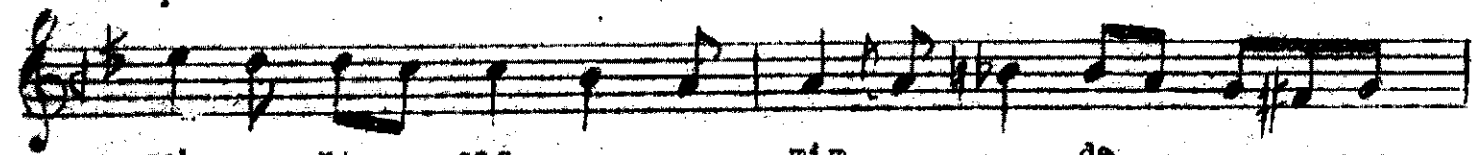
ye dur sun..... ye dur... sun....
i za ri i za ri



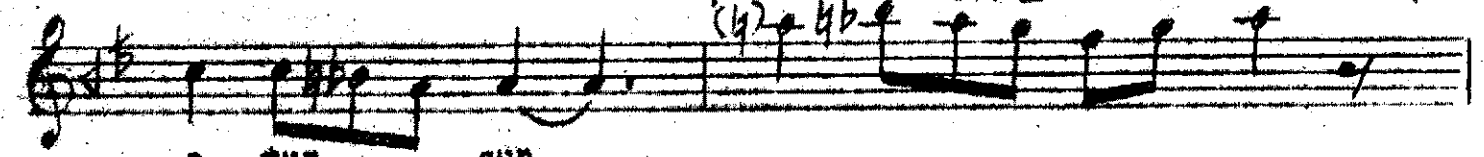
Ku rul sun..... sah ni ces..... mim.... de.....
Bi zim sem ti ne ris di nev



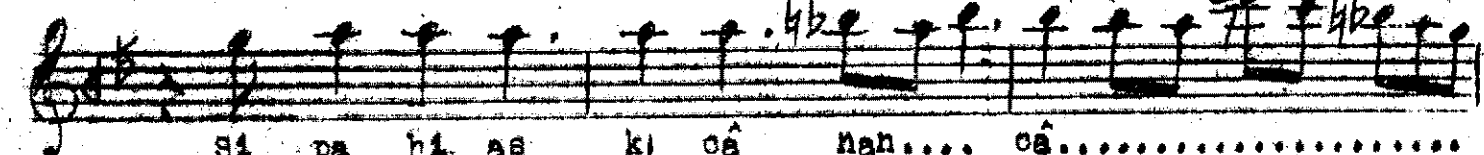
o tur sun..... ku rul sun.....
ba ha ri bi zim sem



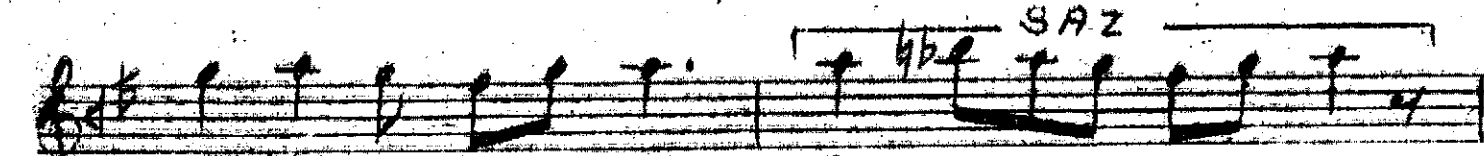
sah... ni ces..... mim..... de.....
ti ne ris di nev



o tur sun
ba ha ri



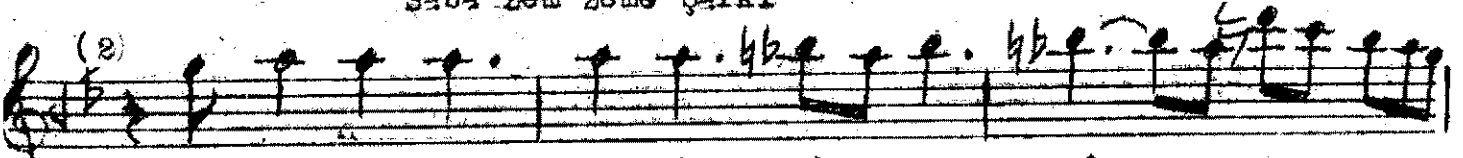
Si pa hi as ki ca nan... ca.....
E ge ris ter ne sey ri la



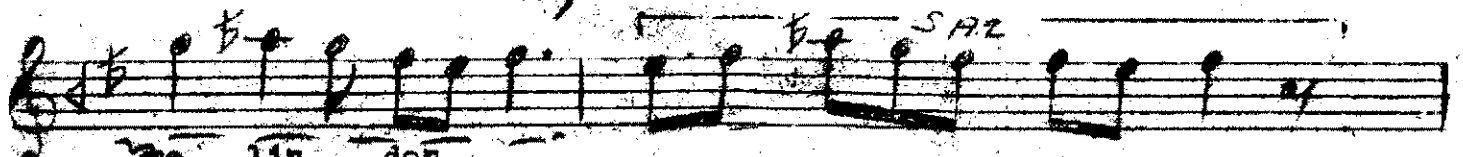
ne lin.... den.....
le za ri

Sabâ Zem Zeme Şarkı

(2)



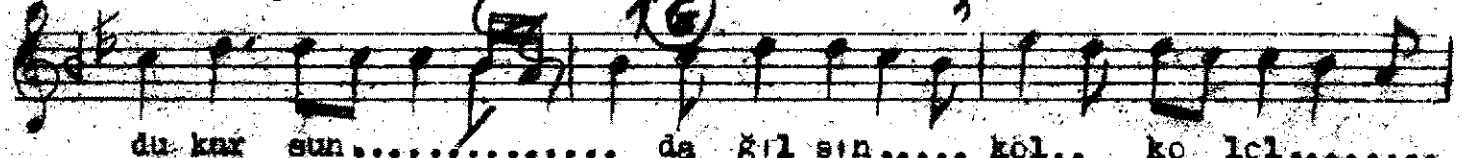
Si pa hi aş ki câ nâh..... câ
E ğe ris ter se sey ri lâ



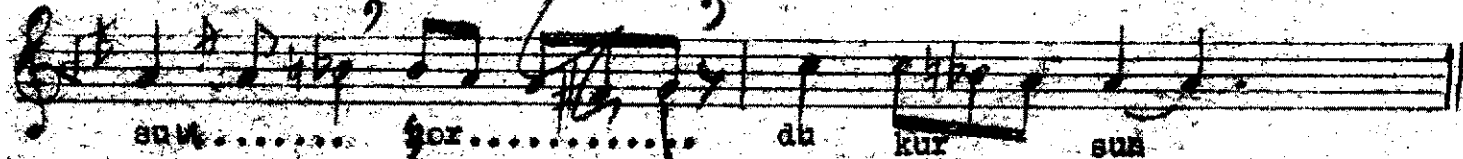
le lin.. den.....
za ri



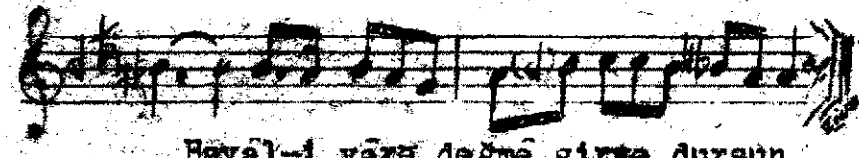
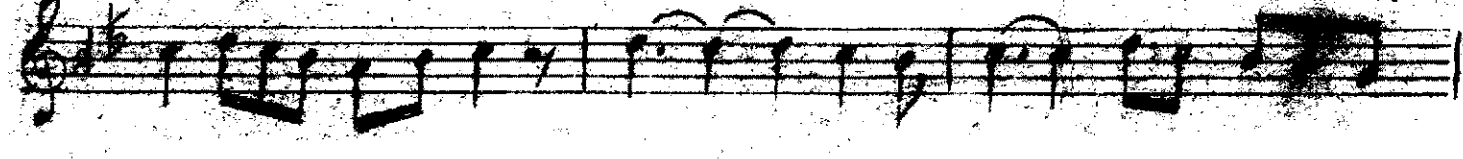
Da ğil sîn..... kol ko lol..... suñ..... şor.....
A çık dır sı ne min ba ği



du kar sun..... da ğil sîn..... kol.. ko lol.....
bu yur sun a çık dır sı ne min



suñ..... şor..... da kur sun
ba ği bu yur sun



- | | | |
|----------|---|---------------|
| Girya | - | Neçkizik |
| Sahn | - | ön taraf |
| Çeşm | - | göz |
| Sipah | - | asker |
| Cânân | - | sevgili |
| Sabâ | - | sabah rüzgârı |
| Gül'izâr | - | gül yâkeli |
| Neybahar | - | ilk bahâr |
| Lâlezâr | - | lâle bahçesi |
| Bağ | - | bahçe |
| Sîne | - | göğüs. |

(I) Hayâl-i yârâ değmê girya dursun
Kürûlshn sahn-ı çeşmin de otursun
Sipah-ı aşk-ı cânân cân elinden
Dağların kol kol olsun ordu kursun.

(2) Haberdâr et sabâ ol gül'izâr!
Bizim semtin arişdi nevbahâr!
Eğer isterse seyr-ı lâlezâr!
Açıkdır sinemin bağı buyursun