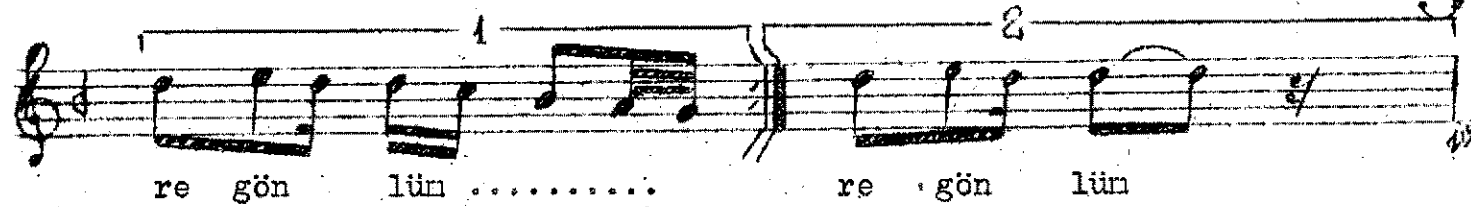
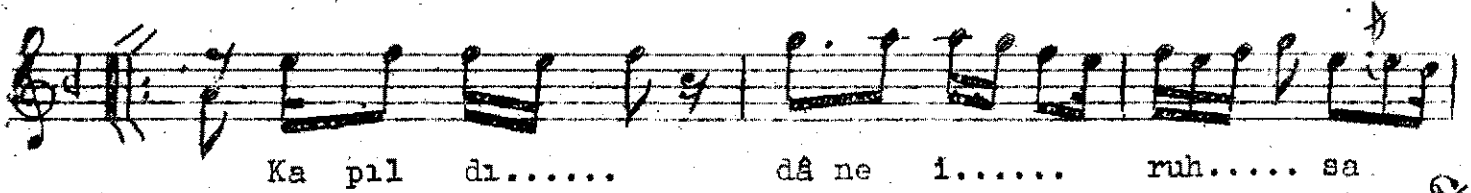
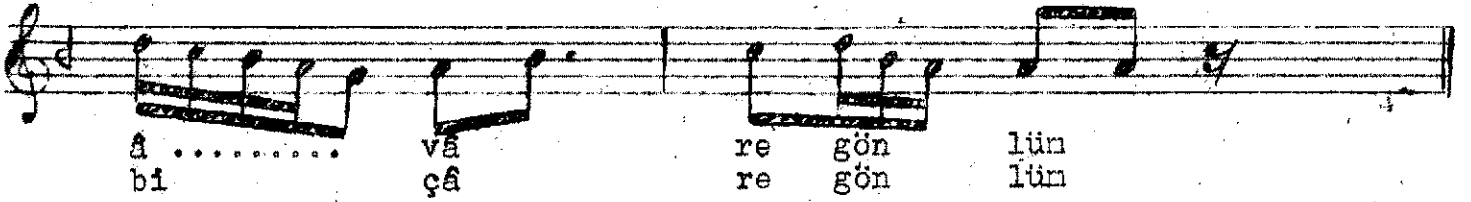
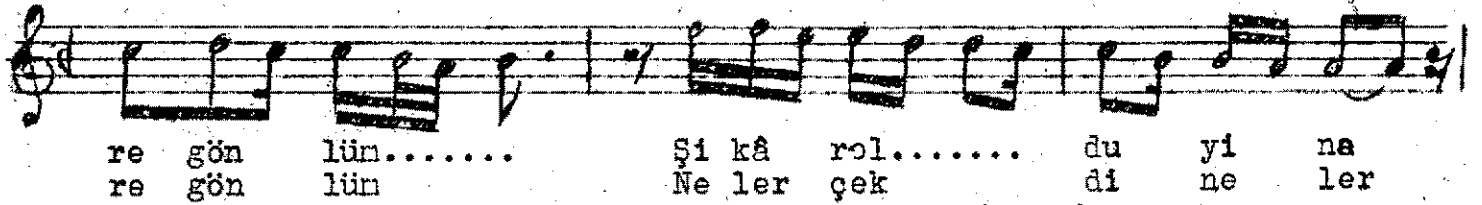
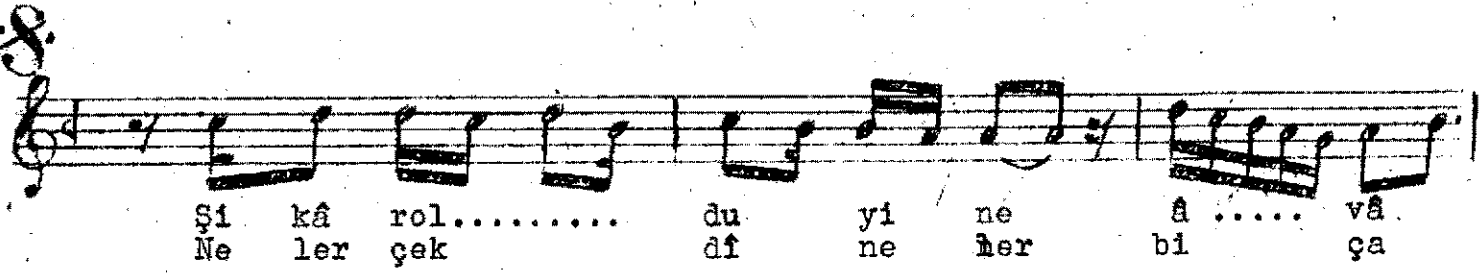
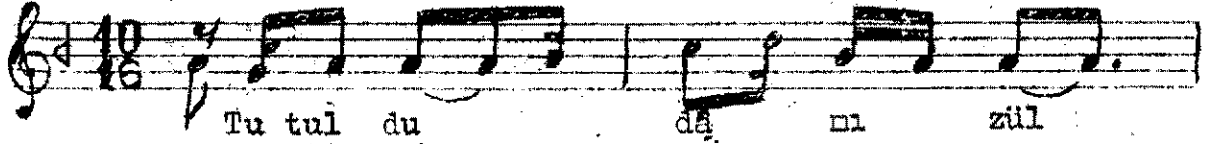


Curcuna



Tutuldu dâm-ı zülf-ü yâre gönlün
Şikâr oldü yinê âvare gönlün
Kapıldı dâne-î ruhsâre gönlün
Neler çekdi neler biçâre gönlün.

Dâm - tuzak
Zülf - yanağa düşen saç
Şikâr - av
Âvare - başıboş
Dâne - yanaktaki ben
Ruhsâr- yanak
Biçâre- çaresiz.