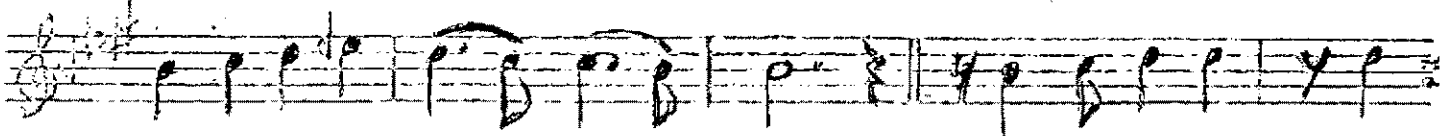
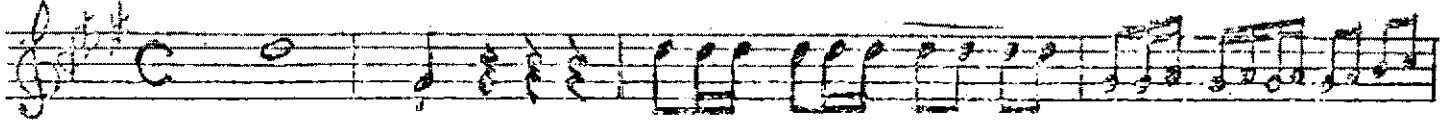


DÜYELİK

HÜZZAM ŞARKI

SAADETTİN KAYNAK

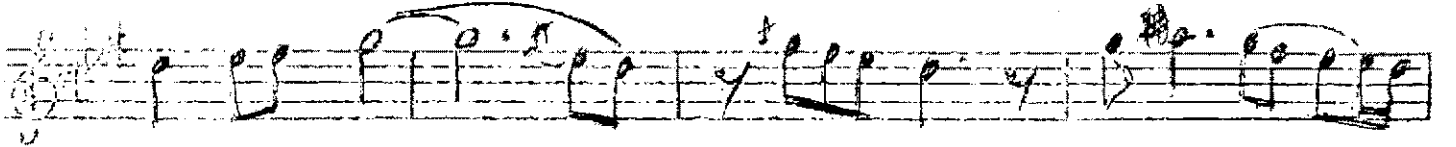
(AŞK YOLUNDA BAĞRI YANIK YOLCULAR) (1895-3.Şubat 1961)



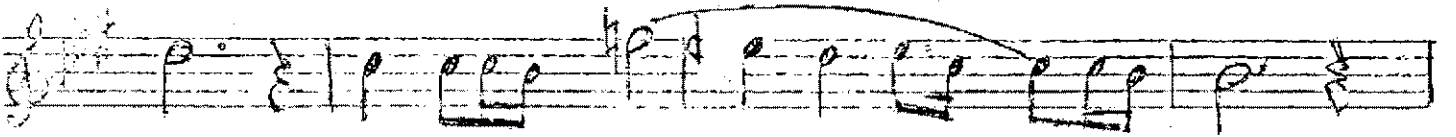
Aşk yo lun da bağ



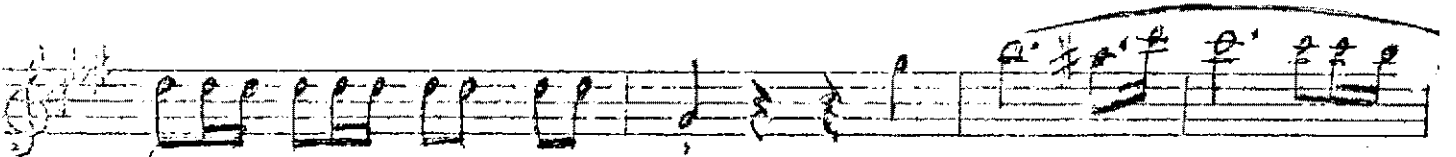
rl ya aşk yol cu lar Var ma dan bir kay na ga



Gün sol du u fuk da ka rar dı su



lar de ğ di se rap du da ga

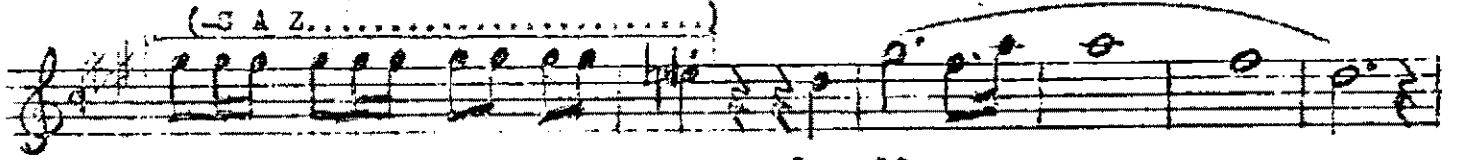


(S A Z,) Mec nun



be ta o ce ğ in da

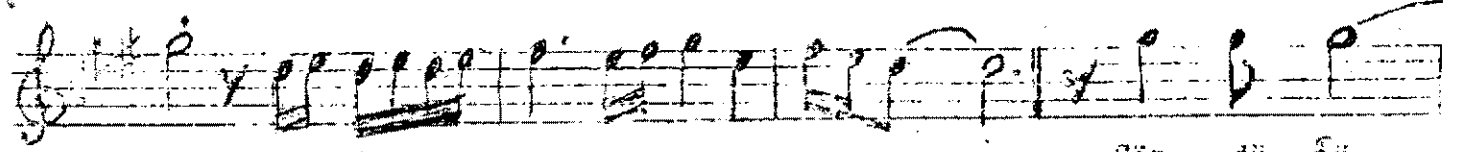
(-3 A Z.....)



Ley lā



ō lūn ya ta ğu da (... sa2



Gör dū ğū



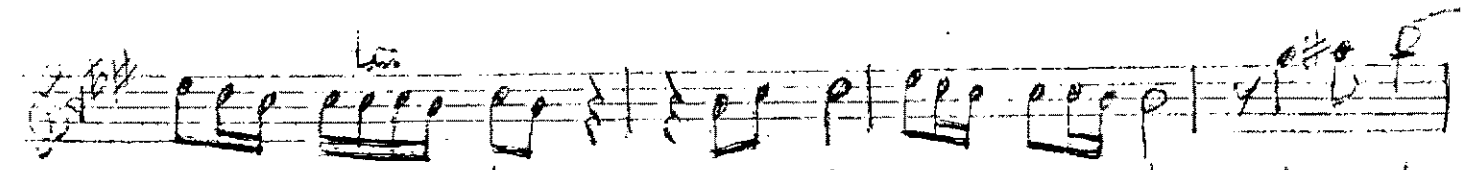
si ben ter ū nu nu sar dı



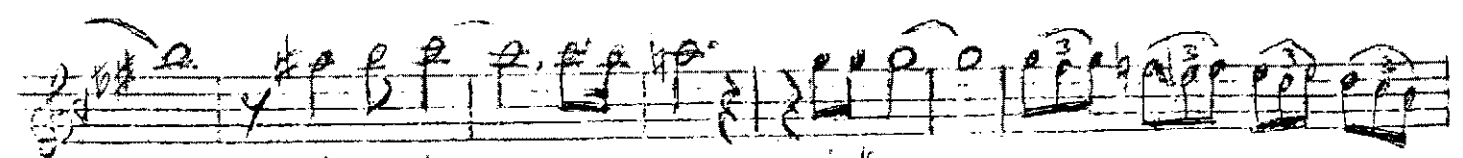
o bir sen ca i di sol du sa rər dı



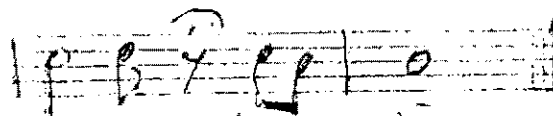
A şik la rı tō ne de cek



ne var di Nec nō na el ve da el ve da



el ve da gi dı yar



Ley lā

Elzem
100.