

NIHAVEND ŞARKI

Ruhumda gezen sevgilisin gözleri mahmur

Usulü: Düyek

Güfte: Fuat Hulusi DEMIRELLİ
Beste: Sadettin KAYNAK



ARANAĞMESİ



Ru hum da ge zen sev gi li sin



göz le ri mah mur göz le ri mah mur



S A Z



Ru hum da na sil san ba na sen

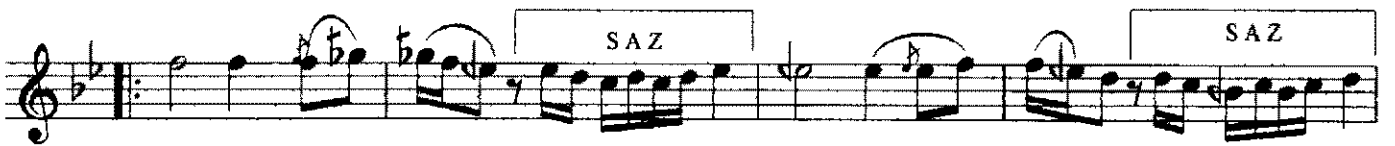


öy le ya kın dur öy le ya kın dur

SON



S A Z



Sor gön lü mü ver dim sa na

SAZ

SAZ

Ruhumda gezen sevgilisin gözleri mahmur (devamı)

The image shows a musical score for a song. It consists of three staves of music. The first staff has the lyrics 'ben kul lu ğa gö züm' written below it. Above the first staff, the word 'S A Z' is written in a box. The second staff has the word 'S A Z' written below it. The third staff has the word 'S A Z' written below it and a signature 'Dr.Semra Özgün' at the end. The music is written in a treble clef with a key signature of one flat (B-flat) and a time signature of 4/4. The melody is written on a single staff, and the lyrics are written below it. The music is a continuation of a previous piece, as indicated by the '(devamı)' in the title.

*Ruhumda gezen sevgilisin gözleri mahmur
Ruhumda nasılsan bana sen öyle yakın dur
Sor gönlümü verdim sana ben kulluğa gözüm
Ruhumda nasılsan bana sen öyle yakın dur*