

DÜYEK

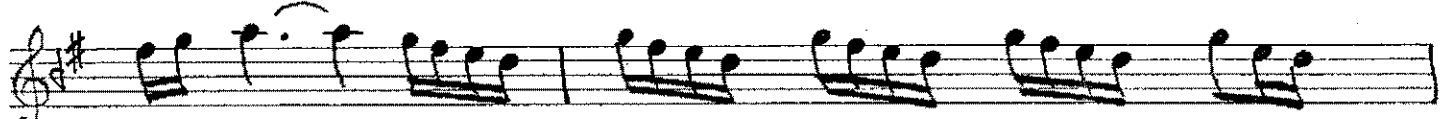
TANIR ŞARKI
(Dizlerine kapansam)

SADETTİN KAYNAK

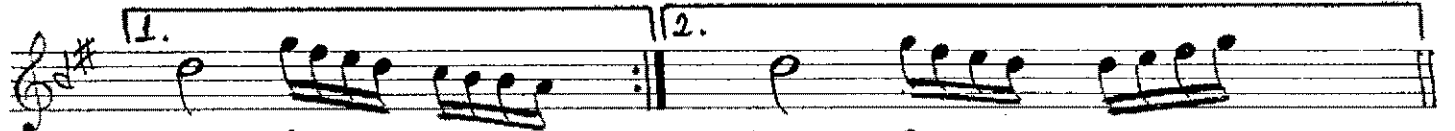
(ARANAĞMESİ)



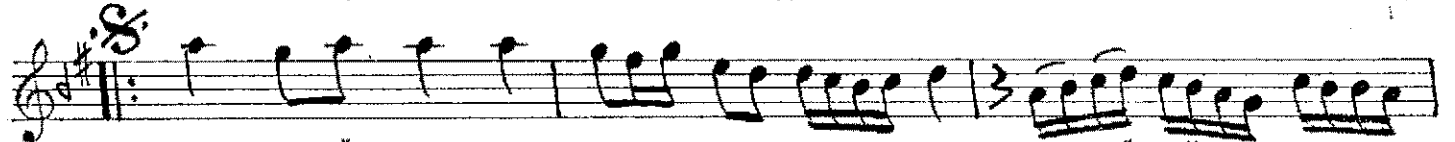
...) DİZLE Rİ NE KAPAN SAM KA NA



KA NA AĞ LA



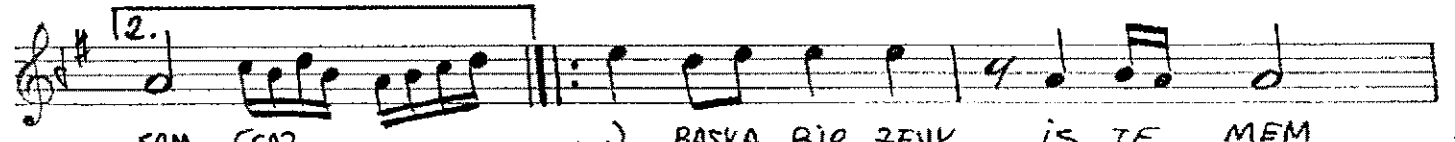
SAM (SAZ SAM (SAZ



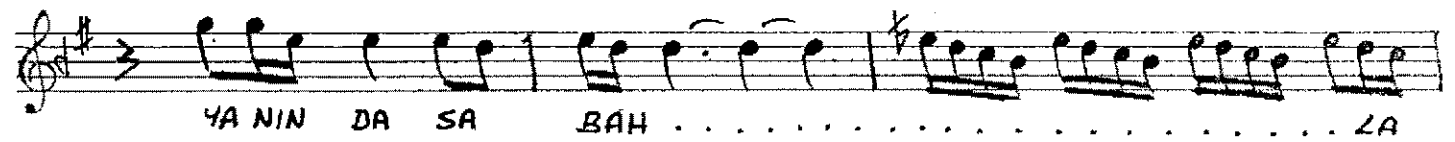
...) O GÜ ZEL SAÇ LA Rİ Nİ BEN ÇÖ ZÜP



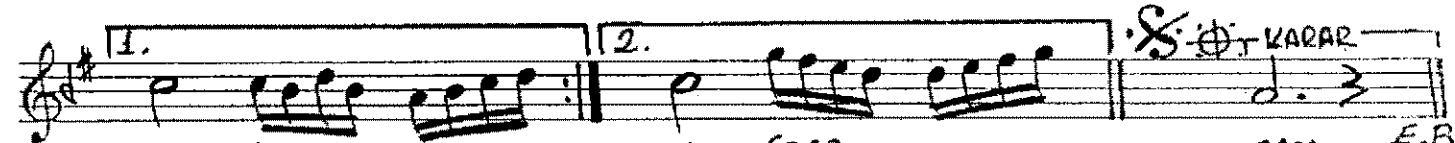
BEN BAĞ LA SAM (SAZ



SAM (SAZ) BAŞKA BİR ZEUK İS TE MEM



YA NIN DA SA BAH LA



SAM (SAZ SAM (SAZ SAM E.B.

DİZLERİNE KAPANSAM KANA KANA AĞLASAM
O GÜZEL SAÇLARINI BEN ÇÖRÜP BEN BAĞLASAM
BAŞKA BİR ZEUK İSTEMEM YANINDA SABAKLASAM

20.01.1990

R D D