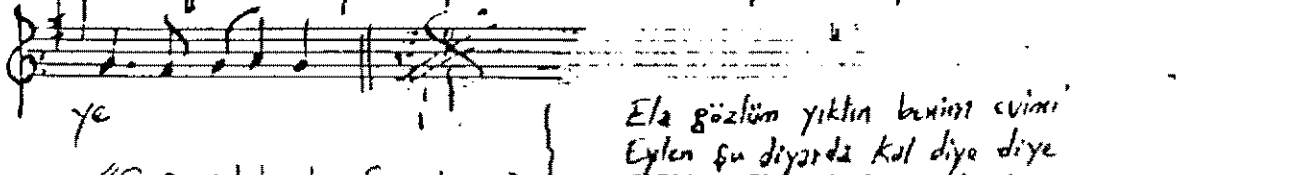
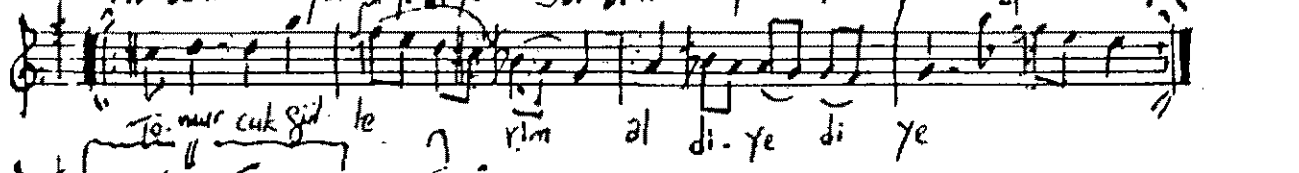
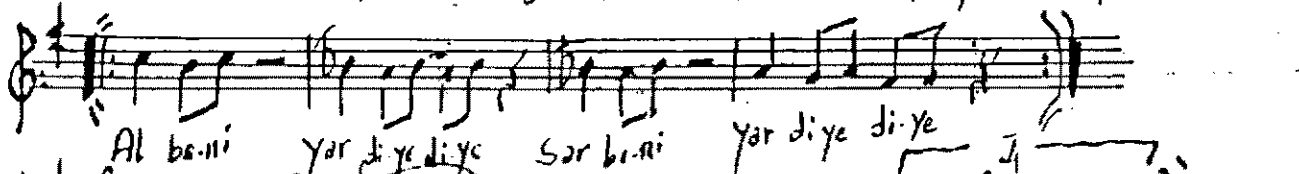
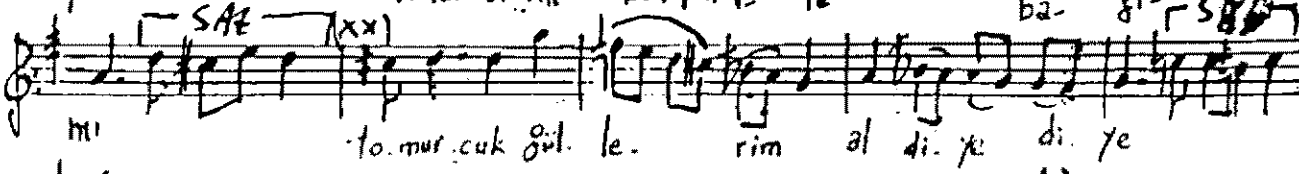
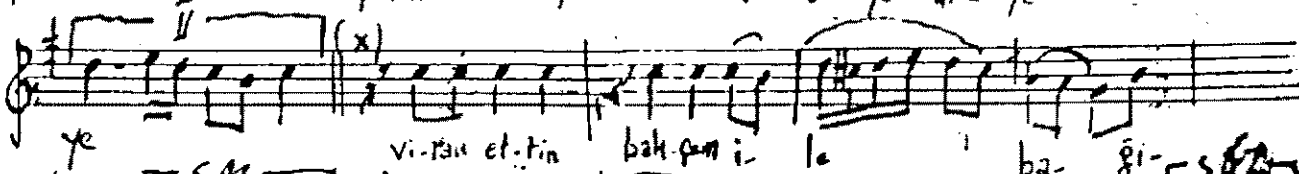
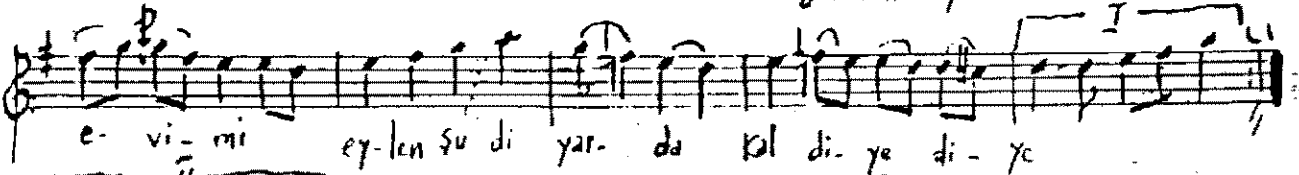
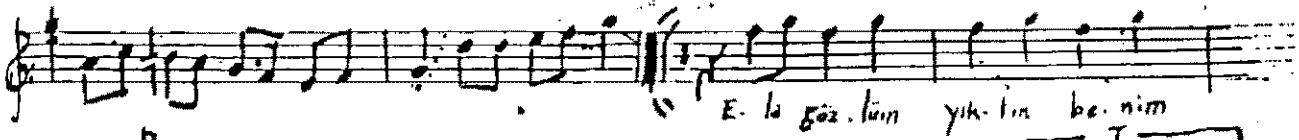
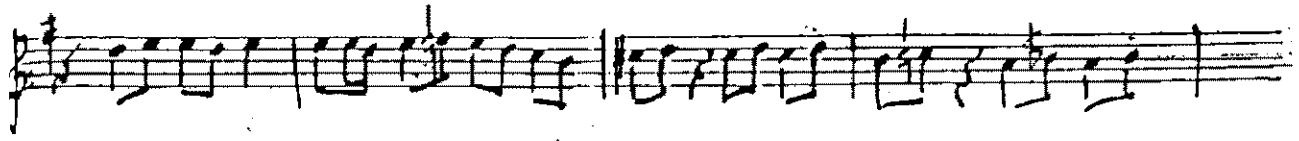


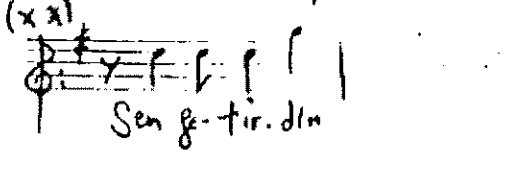
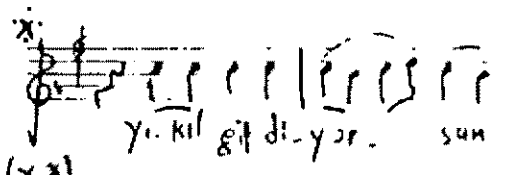


SAVIL SARKI

Salâeddin Kaynak



"Çanakale Geçilmez"
Filminden



Ela göz.lüm yık.tın be.nim evimi
Eylen şu diyerde kal diye diye
Vıran ettin bahşın ile bağırısın
Tomur.cuk güllerim al diye diye

Al beni yar diye diye, Sar beni yar diye diye ...

Karıştıran derki neykip nitmek
Bir şırım var şu silayı terk etmek
Yıkıl gel diyorsun kolayımı gitmek
Sen peşindin beni gel diye diye

Dr. Alâeddin Yavaşca 2295/139