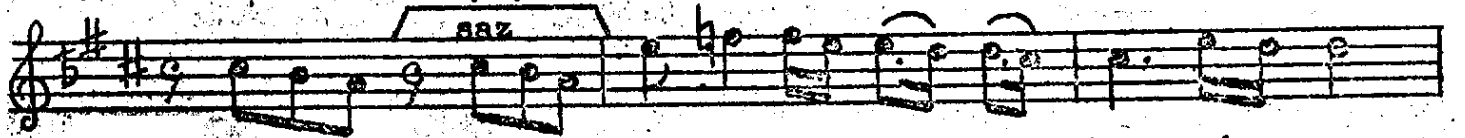
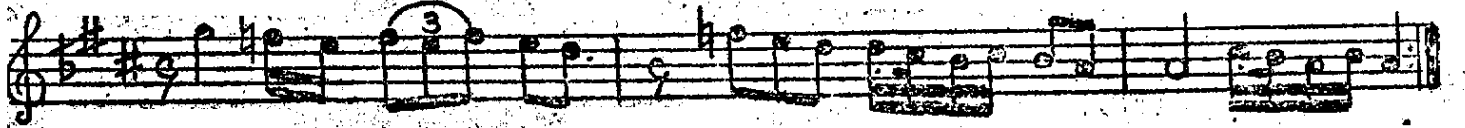


DÜYEK

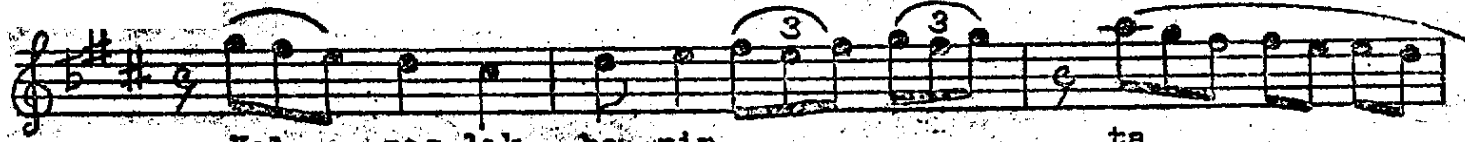
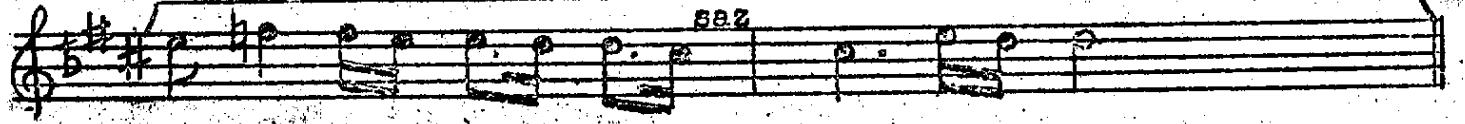
H İ C A Z  
(Nerede kiminle)

MÜZİK: SADI HOŞSES  
SÖZ : SEMİHA SANGAR

(ARANAÇME)



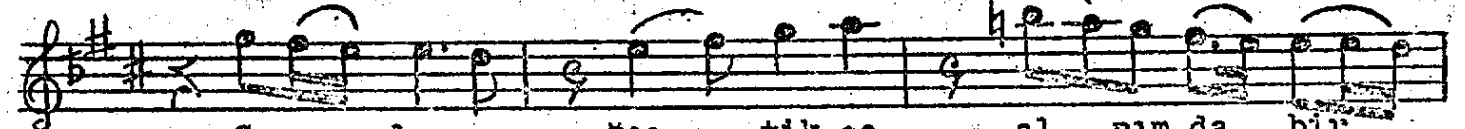
Ne re de ki min le ol san da yi ne



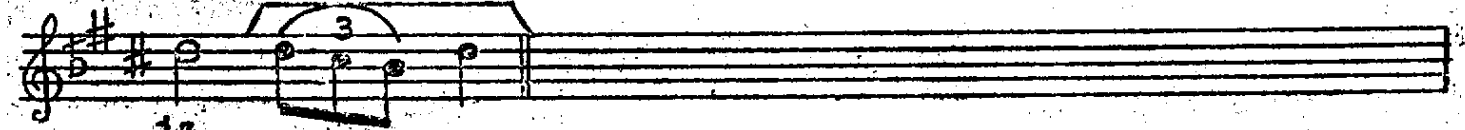
Yal nız lık be nim ta



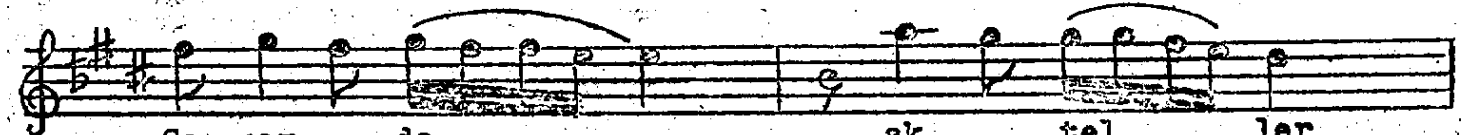
İ çe rim de



Se ne saz ler geç tik çe al nım da bir



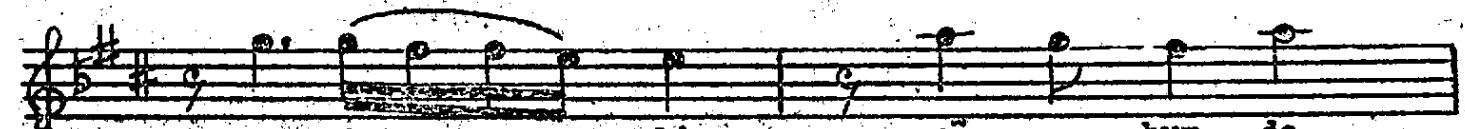
iz



Sa çım da ak tel ler



ço ğa lıp git ti



Boş luk ki rü hum da

gin bir de niz

O ya nan â te şî

sön dü re me di

Gül sem saz söy le sem eğ len sem

bi le

Za nan la i çî me bir hü zün do

lar Ne re de

ki min le ol sam da yi ne

saz

Yal nîz nîz lîk be nim

ta ce rim de -Son-