

SENAT

MAHUR GARKI
(HÜLYALI BAKIŞLARIN, SU GİBİ AKIŞLARIN)

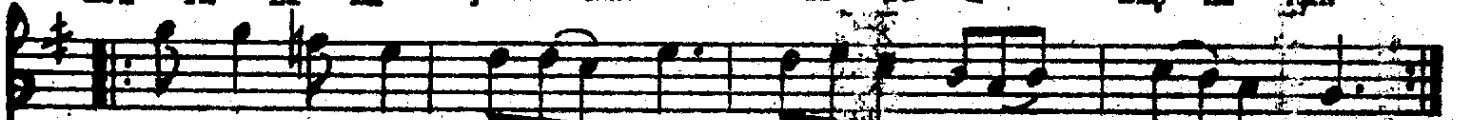
BEŞTE: SADI HOŞSES
GÜLTE: MUSTAFA SEVİLEN



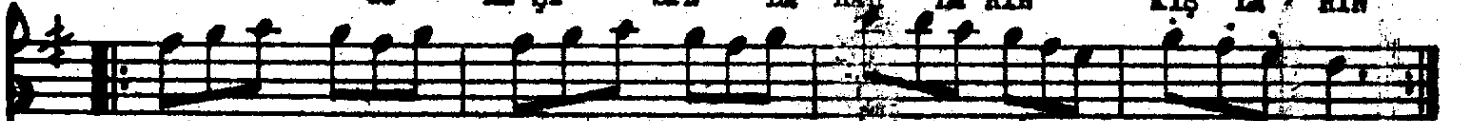
S A Z



HÜL YA LI BA KIŞ LA RIN SU Gİ Bİ A KIŞ LA RIN



MEH TA ŞU ÇU ME Şİ SİN BA HAR LA RIN KIŞ LA RIN



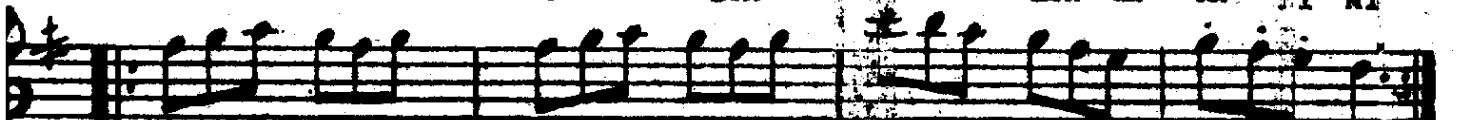
(SAZ.....)



DU YAN YOK FER YA DI MI DA NUT TU LAR A DI MI



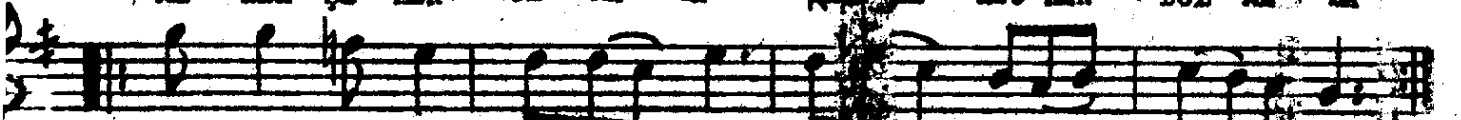
YÂ ME KA VU ŞAN DE DİN KIR DI LAR KA NA DI MI



(SAZ.....)



ME NEK ŞE LER SOL NA SA ME HİC RAN DOL NA SA



HA ZAN BA HAR O LUR DU ŞU AY RI LİK OL NA SA