

# TARZ-I NEVİN LONGA

Birinci Hane

Sedat Öztoprak

The first hane consists of six staves of music. The first staff begins with a treble clef, a key signature of one flat (B-flat), and a 2/4 time signature. The music is written in a single melodic line. The first staff contains a repeat sign followed by a series of eighth and sixteenth notes. The second staff continues the melodic line with similar rhythmic patterns. The third staff features a more complex rhythmic pattern with eighth and sixteenth notes. The fourth staff has a repeat sign followed by a series of eighth and sixteenth notes. The fifth staff continues the melodic line with similar rhythmic patterns. The sixth staff concludes the hane with a final note and a repeat sign.

İkinci Hane

The second hane consists of six staves of music. The first staff begins with a treble clef, a key signature of one flat (B-flat), and a 2/4 time signature. The music is written in a single melodic line. The first staff contains a series of eighth and sixteenth notes. The second staff continues the melodic line with similar rhythmic patterns. The third staff features a more complex rhythmic pattern with eighth and sixteenth notes. The fourth staff has a repeat sign followed by a series of eighth and sixteenth notes. The fifth staff continues the melodic line with similar rhythmic patterns. The sixth staff concludes the hane with a final note and a repeat sign.

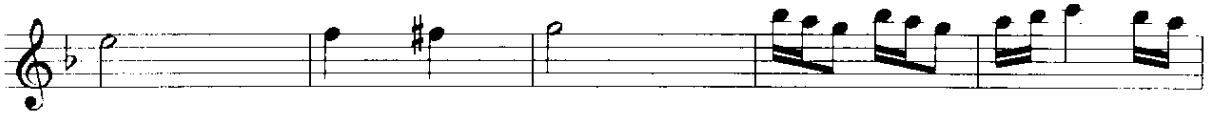
Ali Denge

*Tarz-ı Nevîn Longa*

2



*Üçüncü Hane*



*Ali Dinge*

Not: Orjinali için bkz: *Tarz-ı Nevîn Faslı/ s.20/ Şamlı İskender/ İstanbul-1928 Öncesi*