

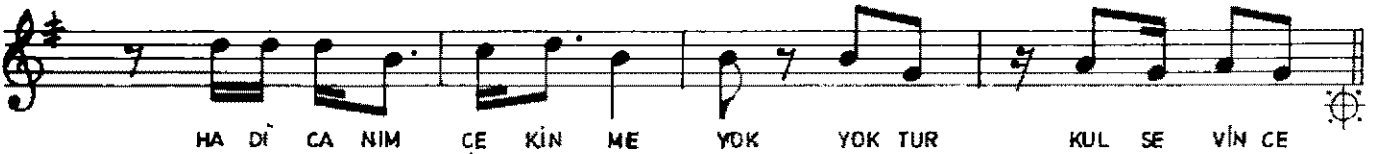
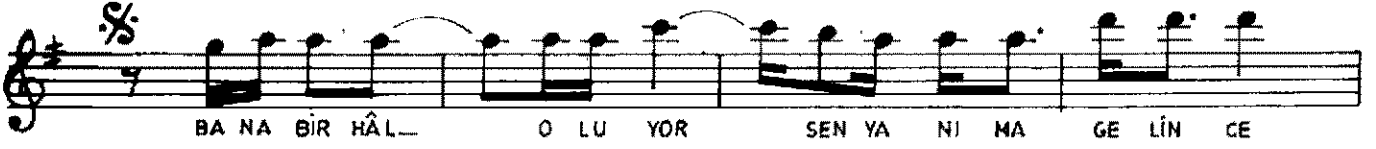
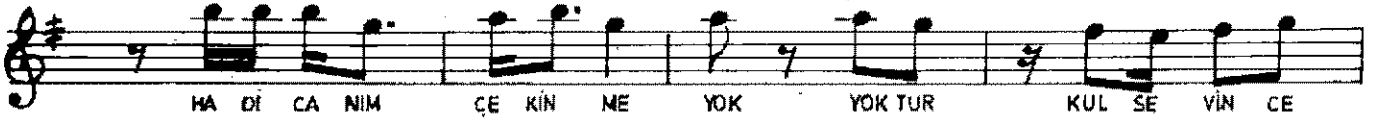
MAHÜR ŞARKI

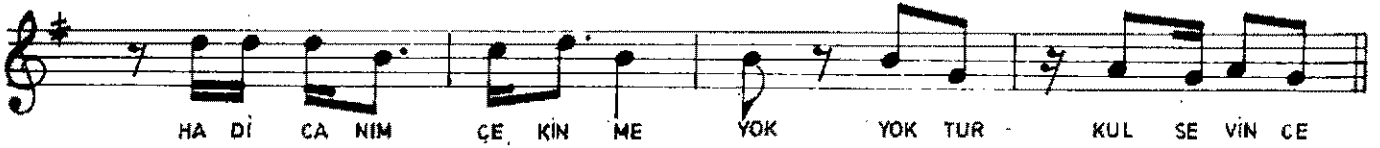
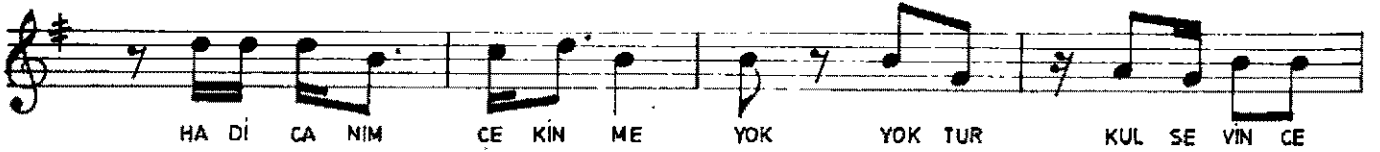
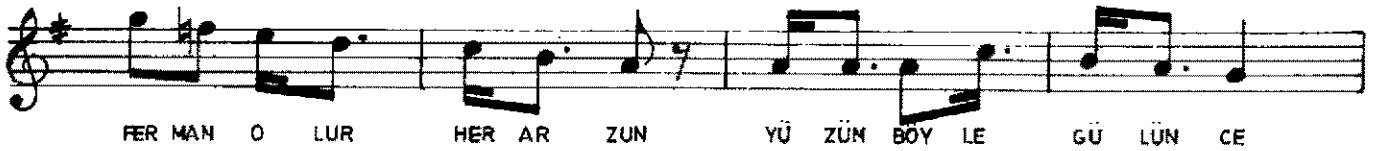
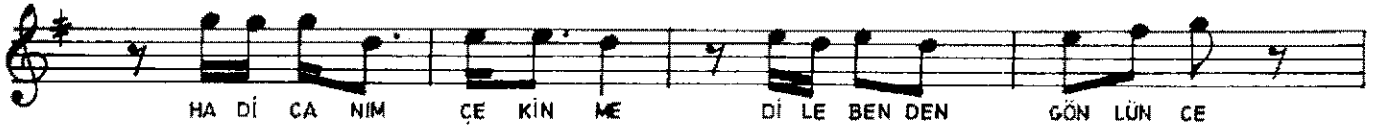
USULÜ: NİM SOFYAN
SÜRE :

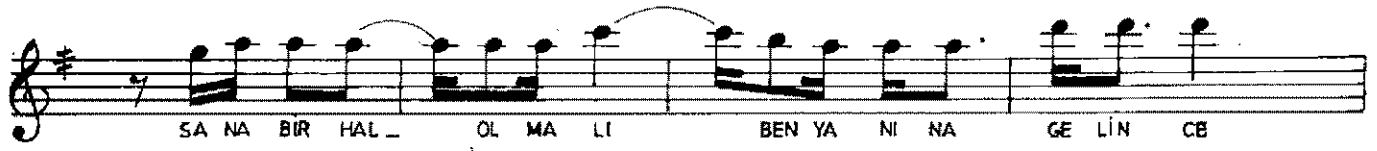
(HADİ CANIM ÇEKİNME, YOK YOKTUR KUL SEVİNCE)

MÜZİK: SELÂHADDİN İCLİ
SÖZ : SEDAT ERGİNTÜĞ

♩ = 80



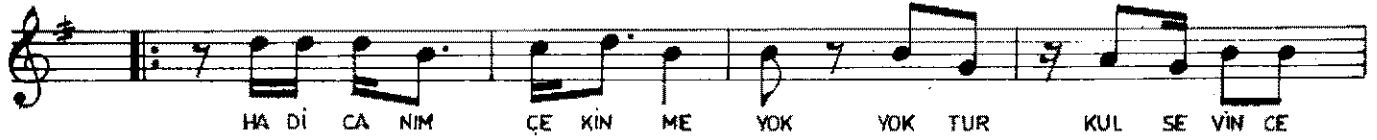




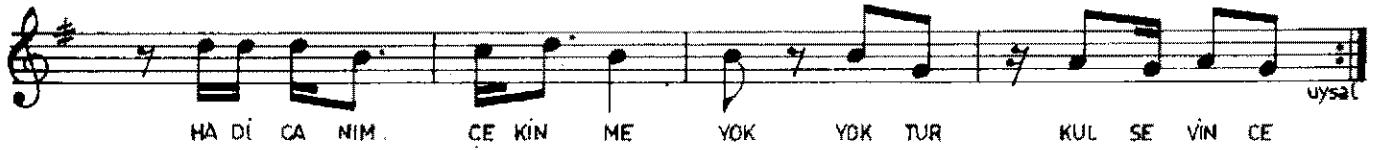
SA NA BİR HAL _ OL MA LI BEN YA NI NA GE LİN CE



SA NA BİR HÂL OL MA LI BEN YA NI NA GE LİN CE



HA Dİ CA NİM ÇE KİN ME YOK YOK TUR KUL SE VİN CE



HA Dİ CA NİM ÇE KİN ME YOK YOK TUR KUL SE VİN CE

— 1 —

HADİ CANIM ÇEKİNME DİLE BENDEN GÖNLÜNCE
BANA BİR HÂL OLUYOR SEN YANIMA GELİNCE
NELER NELER DLMAZ Kİ GÖNÜL İNSAF EDİNCE
BANA BİR HAL OLUYOR SEN YANIMA GELİNCE

— 2 —

HADİ CANIM ÇEKİNME DİLE BENDEN GÖNLÜNCE
FERMAN OLUR HER ARZUN YÜZÜN BOYLE GÜLÜNCE
KADER BİLE HOŞ GÖRÜR SEVEN BOYUN EĞİNCE
SANA BİR HAL OLMALI BEN YANINA GELİNCE.

Sedat Ergintuğ