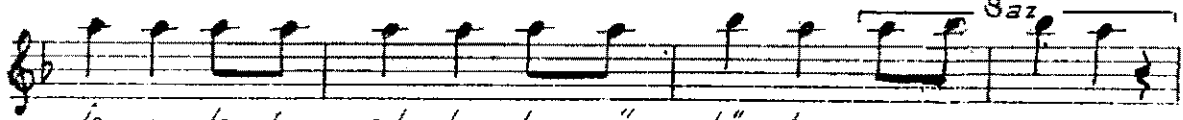
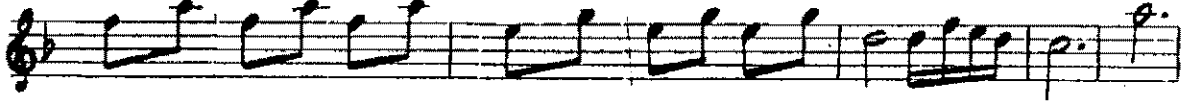


Semai

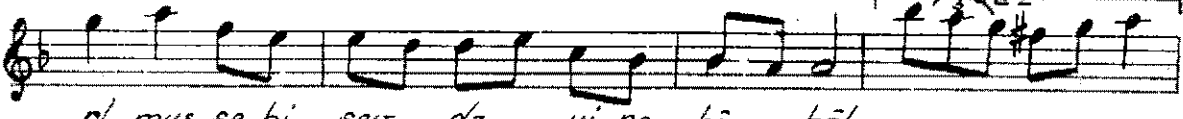
MUHAYYER KÜRDİ ŞARKI  
(İşveyle, fısıltıyla, gülüşle...)

Güfte : Ahmet Haşim  
Beste : Selahattin İçli  
Haziran 1953

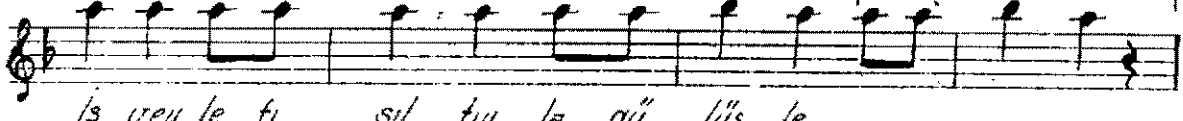
.Aranağmesi



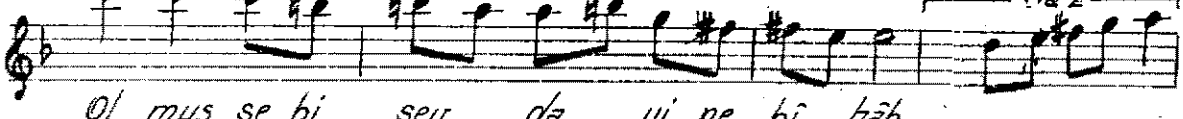
İş vey le fı sıl tıy la gü lüş le



ol muş şe bi sev da yi ne bî hâb



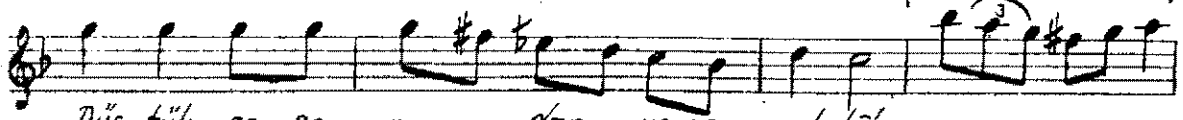
İş vey le fı sıl tıy la gü lüş le



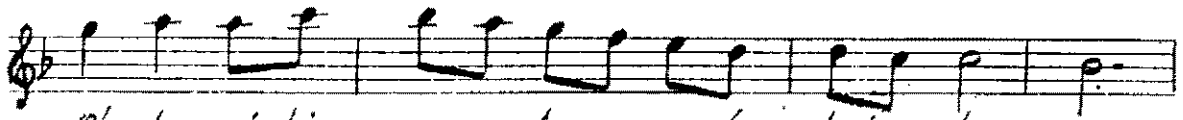
Ol muş şe bi sev da yi ne bî hâb



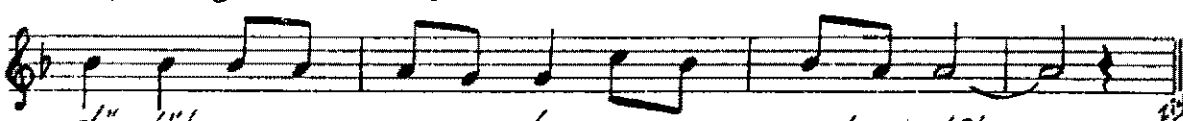
Ok lar gi bi sap lan ma da kal be



Düş tük çe se ma dan ye re meh tâb



Ok lar gi bi sap lan ma da kal be . . . .



düş tük çe se ma dan ye re meh . tâb

İşveyle fısıltıyla, gülüşle  
olmuş şeb-i sevda yine bihâb

Oklar gibi saplanmada kalbe  
Düştüğçe semadan yere mehtâp

Buseyle kilitlemiş ağızlar  
Gözler neler eyler neler işrâb

Uçmakta bu âteşli havâda  
Vuslat demi bir kuş gibi bitâb.