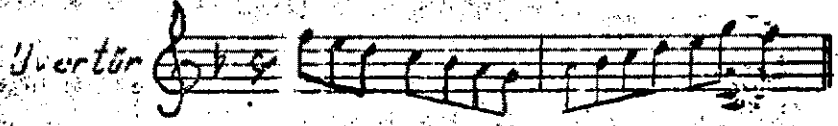


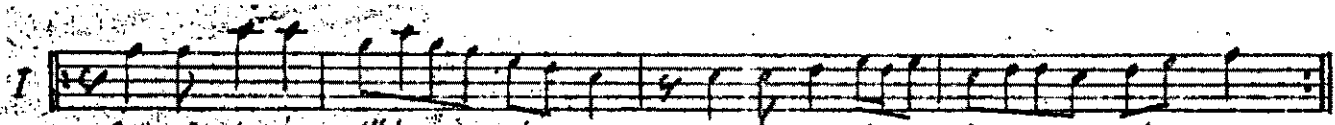
Acem Aşiro n Müziği Selshattin inale

Gök yüzünde tüten olsam söy; Kervançıoğlanı

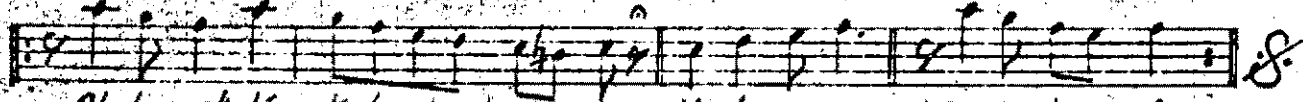
DÜYEK



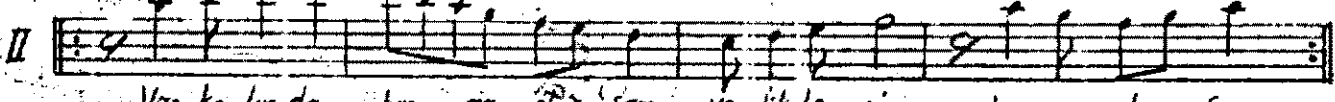
Koda



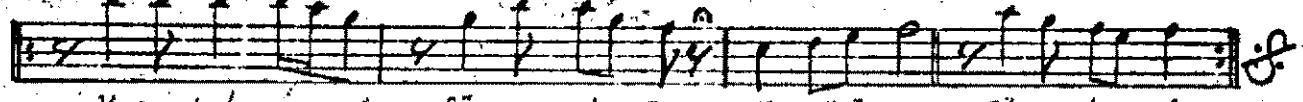
Gök yüzünde tüten ol Sam yer yüzünde tüten ol Sam



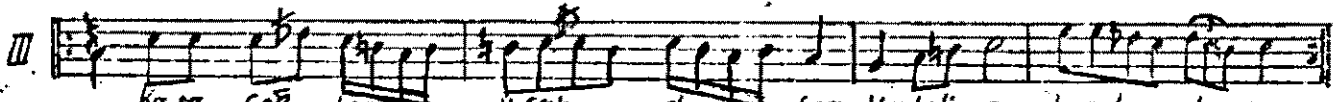
Al benekli Keten ol Sam Yarbaynu na Sar Sa be ni



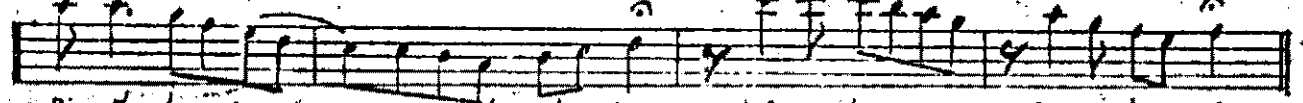
Yar kolunda burma ol Sam ye dik le ri hur ma ol Sam



Al çim al çim Sür ma ol Sam Yar gözü ne Sür Se be ni



Kara çoğ lan Uşak ol Sam Yarbeli ne Kuşak ol Sam



Bir at las ier Yas tık ol Sam Yar başına Ser se be ni

*Handwritten signature*