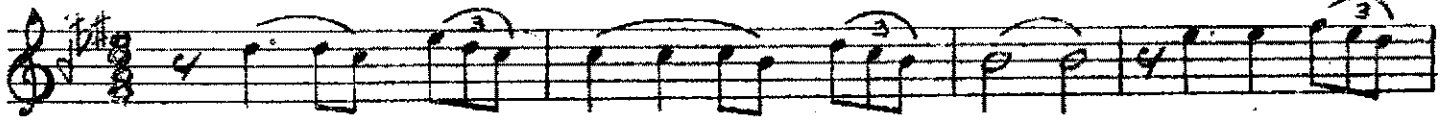


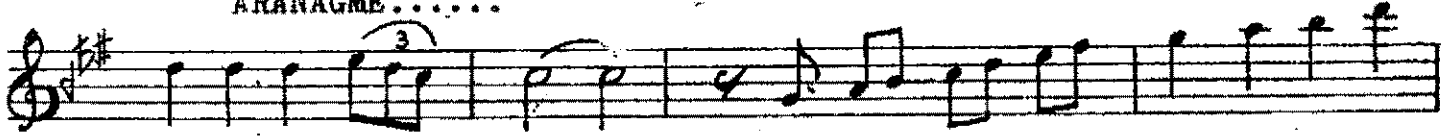
DÜYEK

HÜZZAM ŞARKI
(KADIN BİR GÜL AŞK BİR MEVSİM)

BESTE:
SELAHATTİN İNAL



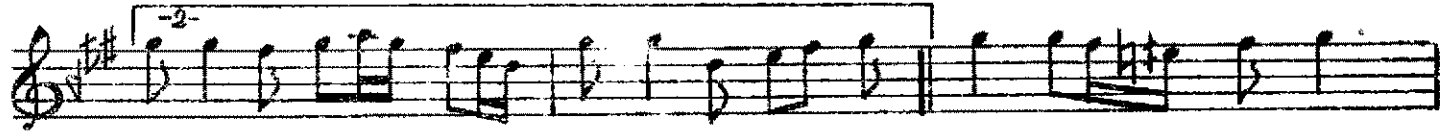
ARANAĞME.....



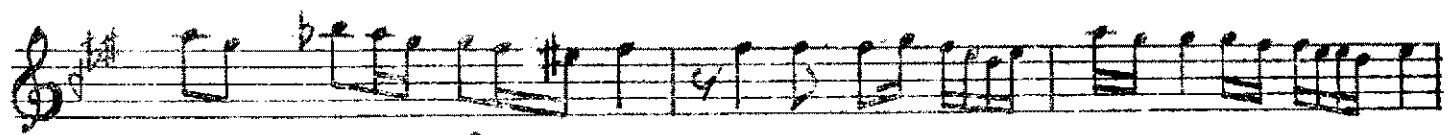
KA DIN... BİR GÜL AŞK BİR MEV SİM TEZ GE ÇER KAN



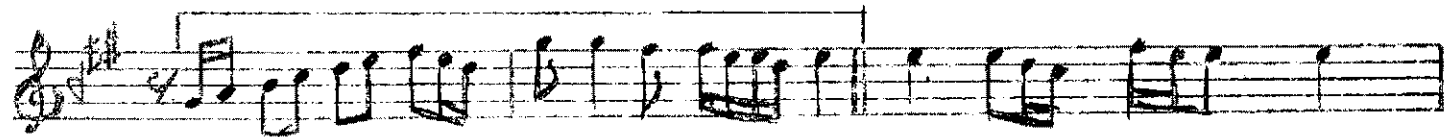
MA YA..... DEĞ MEZ (Saz.....)



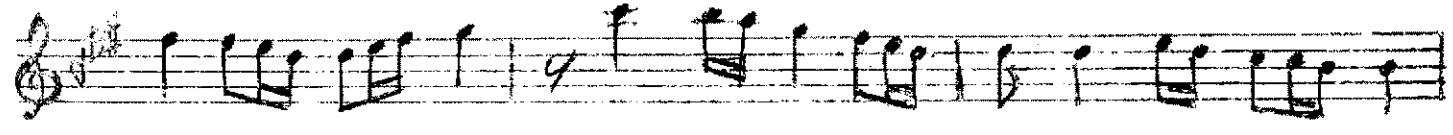
Saz.....) LEY LA..... O LUR



HER MEC Nİ NA BİR ME LİK SAN MA YA..... DEĞ MEZ



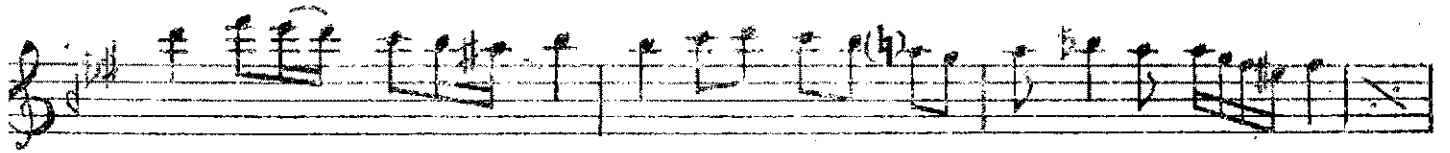
(Saz.....) LEY LA O LUR.....



HER MEC Nİ NA BİR ME LİK SAN MA YA..... DEĞ MEZ



(Saz.....) O NUT O NUT...



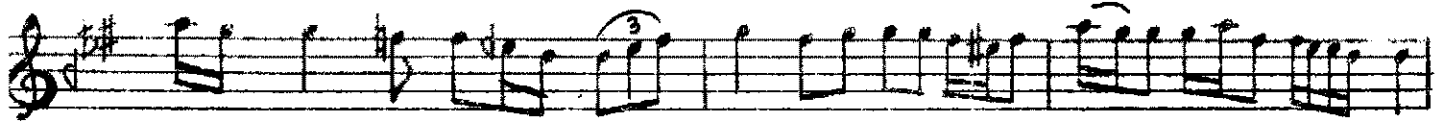
... TU ĞU YER DE..... A DI NI AN..... MA YA.. DEĞ MEZ



AH..... A DI NI AN MA YA..... DEĞ MEZ



(Saz.....)YA SER.. HOŞ KAL



YA RÜ... YA DA.....HA YAT U YAN ma ya..... DEĞ MEZ



YA SER HOŞ KAL YA RÜ... YA DA..... HA YATU YAN MA YA DEĞ MEZ

KADIN BİR GÜL AŞK BİR MEVSİM TEZ GEÇER KANMAYA DEĞMEZ,
LEYLA OLUR HER MİCNÛNA BİR MÜLEK SANMAYA DEĞMEZ,
UNUT UNUTTUĞU YERDE ADINI ANMAYA DEĞMEZ
YA SER HOŞ KAL YA RÛYADA HAYAT, UYANMAYA DEĞMEZ