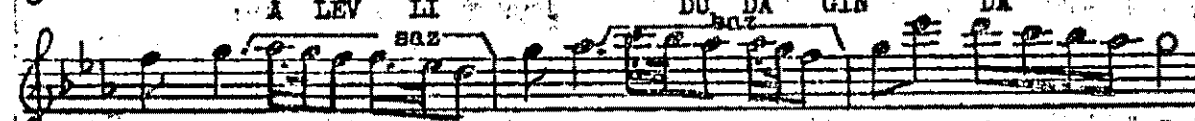
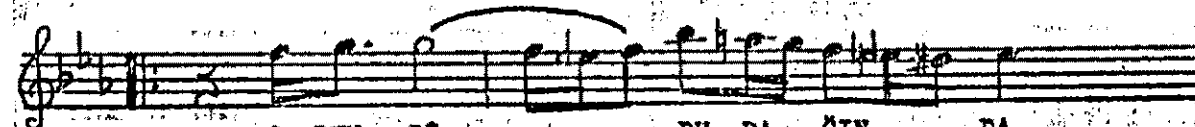
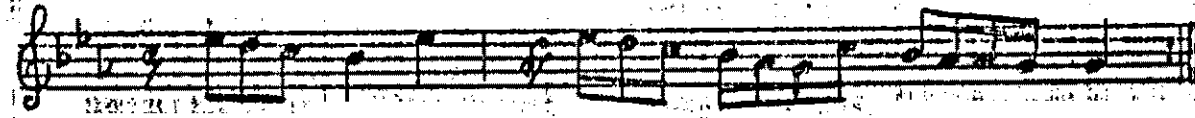
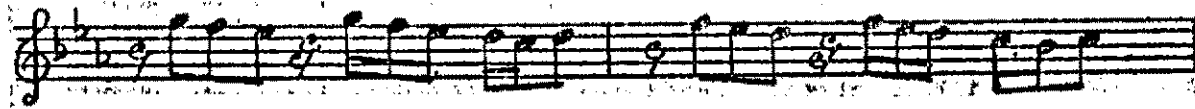
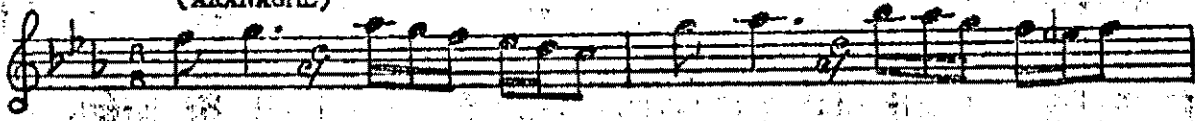
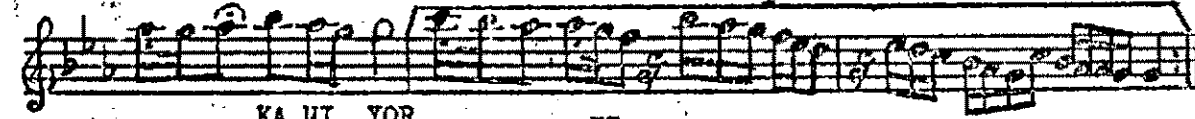


(ARAVÂĞİE)



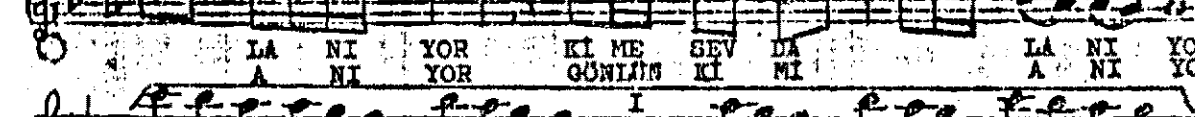
YI NE YI NE YI NE BİR GÜL



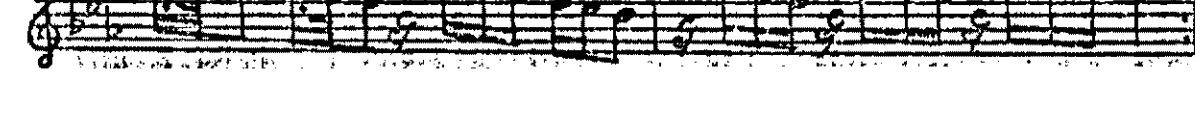
KA NI YOR II



GÜ LÜM SE YEN GÜZ LE RİN KI ME SEV DA
SÖY LE CÂ NA BA NA SEN GÖNLÜM KI MI



LA NI YOR KI ME SEV DA LA NI YOR
A NI YOR GÖNLÜM KI MI A NI YOR



II

BİR DER DE MÜP TE LÂ KI KAL BİM SAN KI

YA NI YOR KAL BİM YA NI YOR

II

II

Alevli dudagında yine bir gül kanıyor
Gülünseyen gözlerin kime sevdalanıyor
Bir derde müptelâki sanki kalbin yanıyor
Böyle cânâ bana sen, gönlün kimi anıyor