

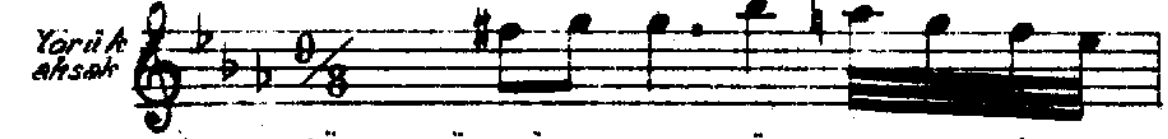
Udi
elâhattin

ERİSEM GÖYSÜNÜN ÜSTÜNDE

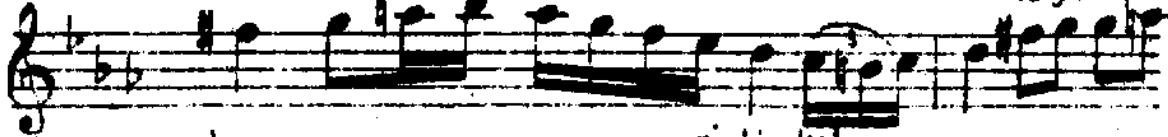
K. Hicaz kâr
Güfte: Nurettin
Rüşti B.

Yarı k
ahsak

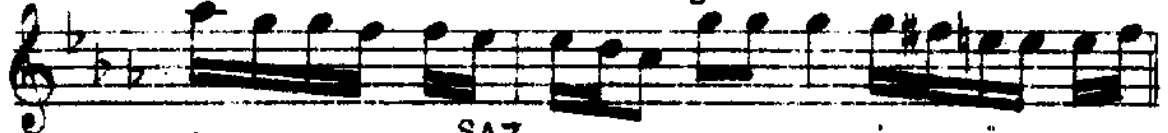
E ri sem göy



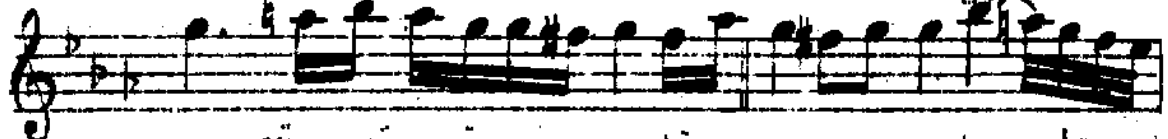
sü nün üs tün de ya nıp



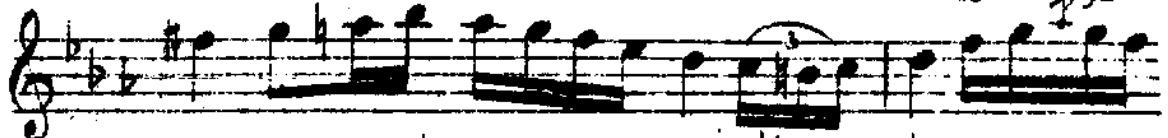
ruh gi bi kal



sam "SAZ" e ri sem göy



sü nün üs tün de ya



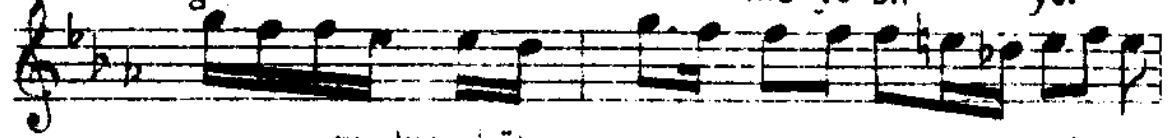
nıp ruh gi bi kal



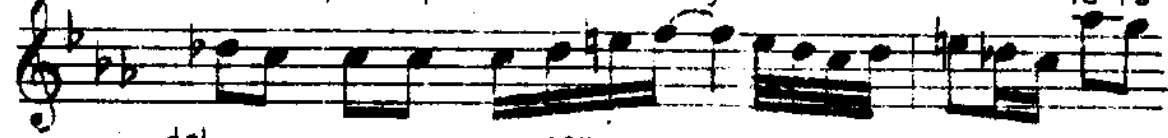
sam "SAZ" kal bi ne



gir me ye bir yol



bu lup hül ya la ra



dal sam

