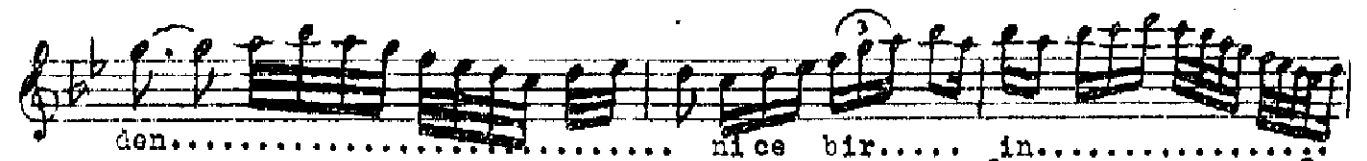
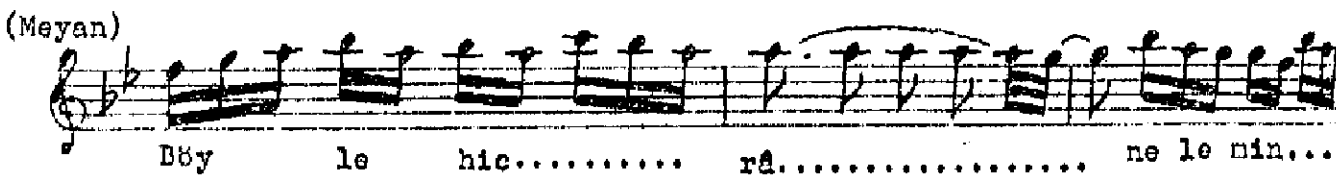
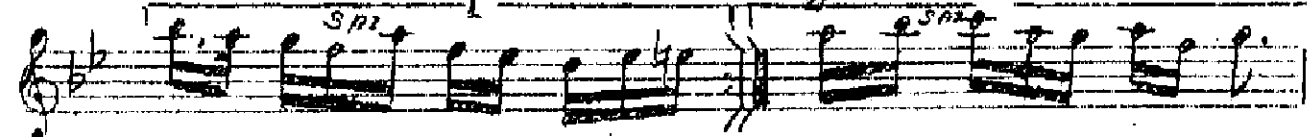
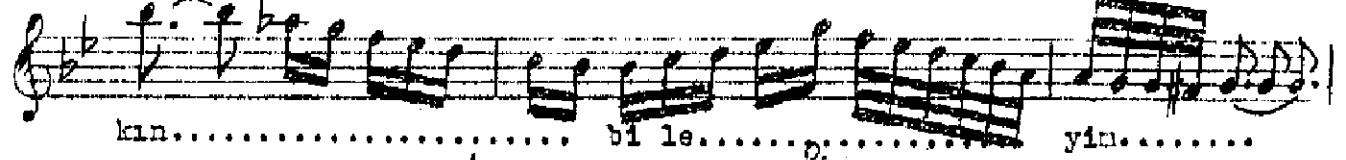
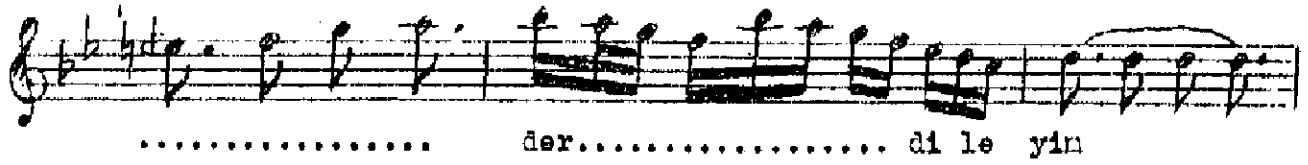
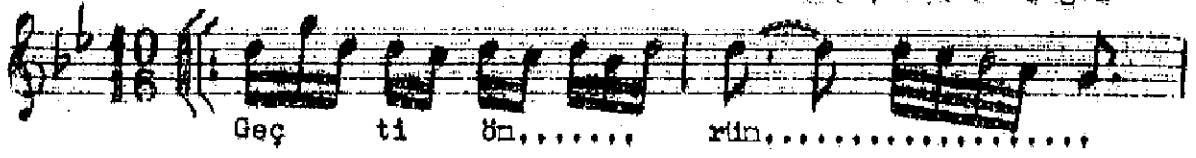


Usulü: Curçuna

NIHAVEND ŞARKI

Beste: Selâhaddin Pânah

Güfte: Veedi Bingöl



Geçti önrün yine hâlâ ben o bin derâ ileyin
Söyle dermânını ey sevgili, aşkın bileyin
Böyle hicrân eleninden nice bir, inleyeyin
Söyle dermânını ey sevgili, aşkın bileyin.