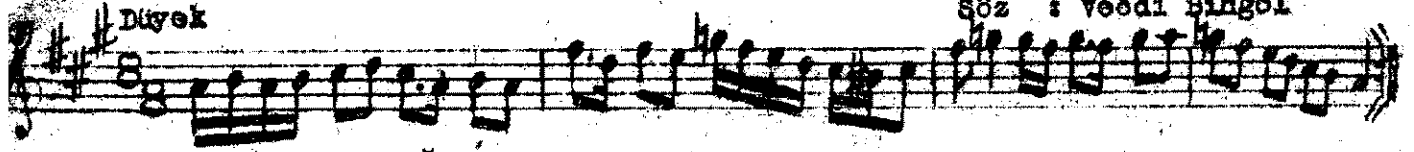


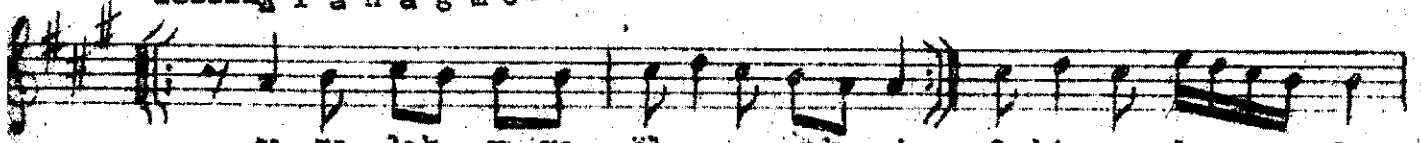
(AYRILIK YARI ÖLMÜK MİŞ)

Nisaburek Şarka
Beste: Selahattin Pınar
Söz : Veddi Bingöl

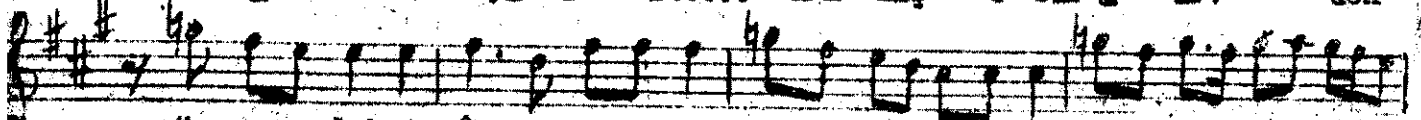
Düyek



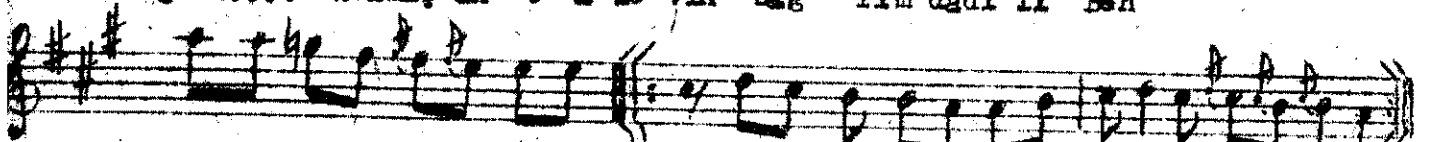
Aranağ me



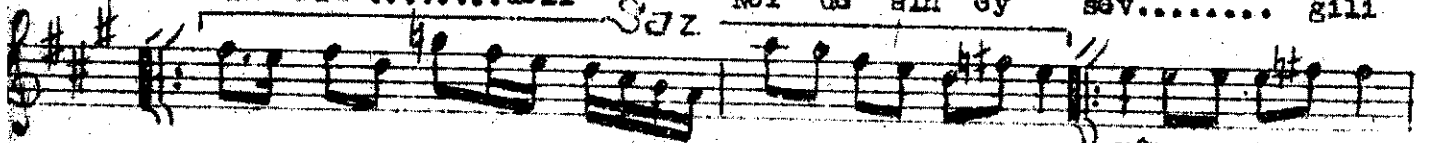
Ayrılık yarı öl..... mek miş O bir alev den



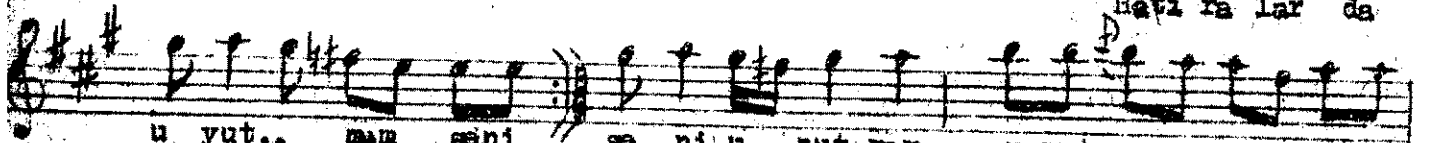
göm..... lekmiş an o alevin bağ rım dadi li Ben



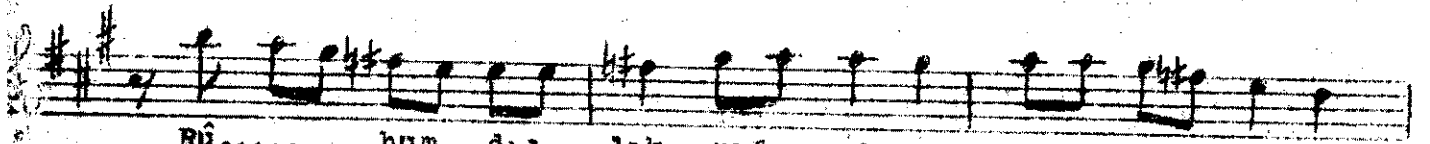
o lu rumdeli *Söz* Ner de sin ey sev..... gili



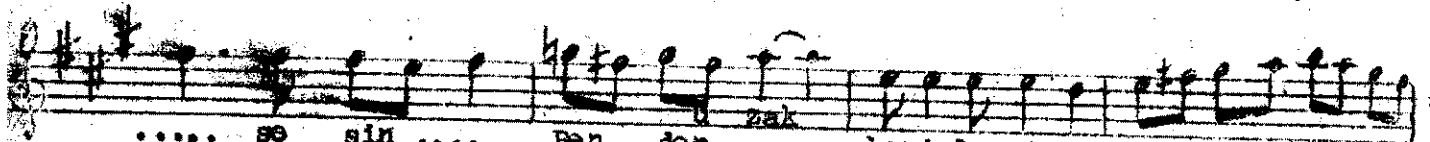
Hâta ra lar da



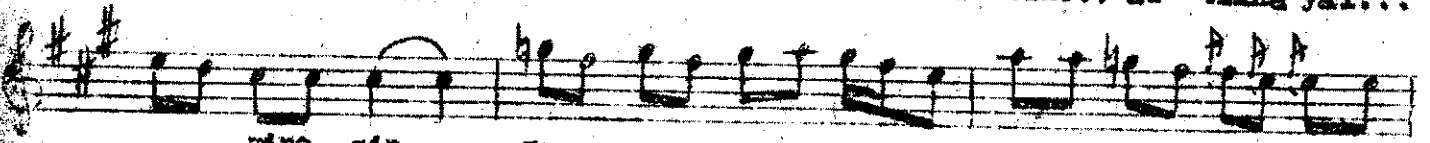
u yut.. mam seni se ni u nut mam u nut mah seni



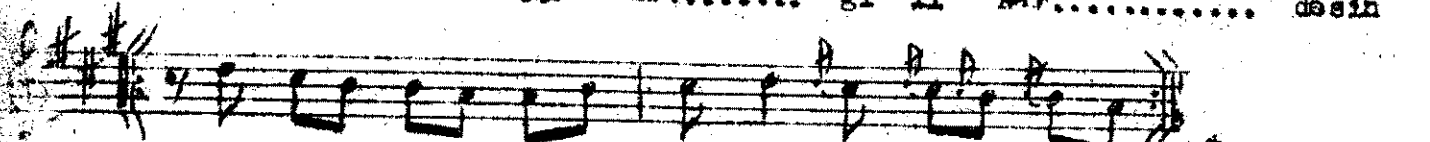
Rû..... hum daa lik nefesin... Kula ğımı ok şar



..... se sin Ben den uzak benimle sin... ar tıkka yâi...



.... mino sin En sev..... gi li Ner..... desin



Ner ... de sin ey sev..... gili.

Ayrılık yarı ölmekmiş
O bir alevden gömlekmiş
An o alevin bağrında dili
Ben böyle sensiz olurum deli
Nerdesin ey sevgili

Hâta ralarda unutmam seni
Seni unutmam, unutmam seni
Rûhumda ılık nefesin
Kulağımı okşar sesin
Benden uzak, benimlesin
Artık hayal mi nesin
Ey sevgili nerdesin
Nerdesin ey sevgili.