

(DERDİ HİCRANINLA HER AN AĞLARIM)

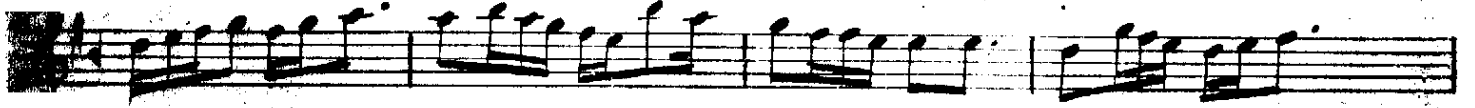
DİLKEŞHAVERAN ŞARKI

Çarçuna

Selânikli Ahmed Bey



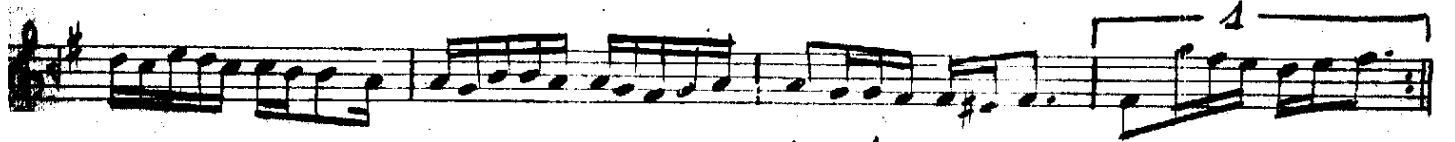
Der di hic ra mın-la her an



la-rım (faz ----)



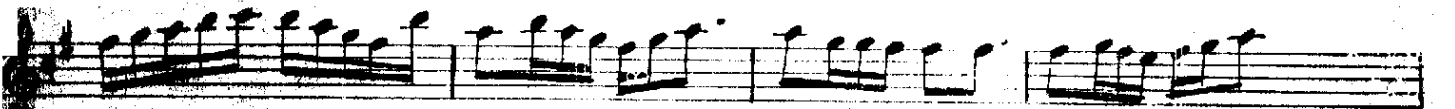
ma te mi has ret le zul met



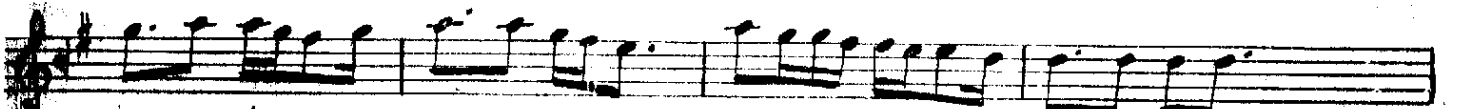
bağ bağ-la-rım



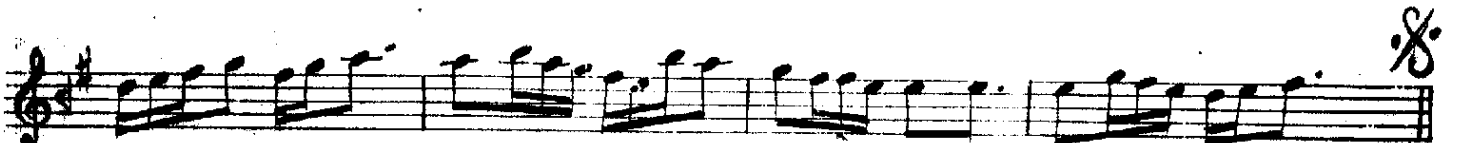
A te şin le kal bî za ri



dağ dağ-la-rım (faz ----)



cu yi ba ri - aşk-ı-le ben



şaq-ı-la-rım (faz ----)

Derdi hicranınla her an ağlarım
Matemi hasretle zulmet bağlarım
Ateşle kalbi zarı dağlarım
Çay-i bîr-i aşk ile ben şaşlarım