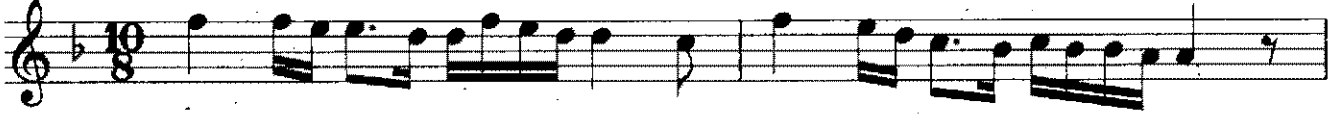


FERAHEFZÂ SAZ SEMÂSİ

USÛLÜ:AKSAK SEMÂİ

MÜZİK:ŞERİF MUHİDDİN TARGAN

♩ = 160



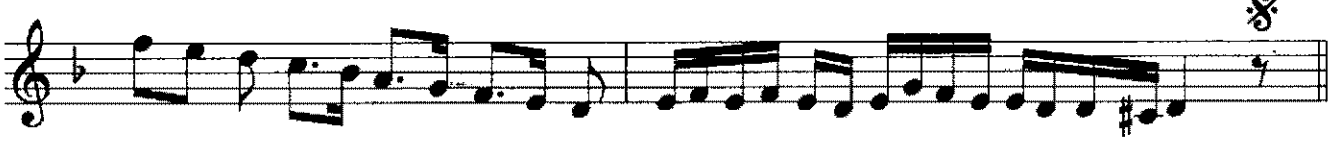
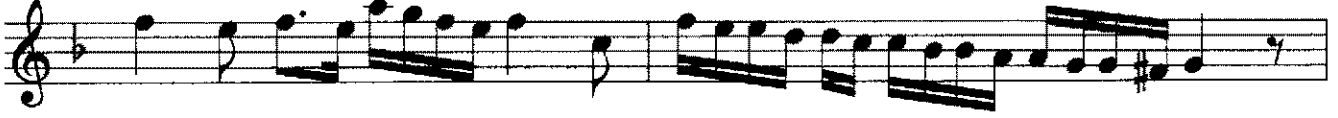
TESLİM



2.HÂNE



3.HÂNE



4. HÄNE

Musical score for '4. HÄNE' in 6/4 time, featuring four staves of music. The first staff begins with a treble clef, a key signature of one flat (B-flat), and a 6/4 time signature. The music consists of a series of eighth and sixteenth notes, with some beamed sixteenth notes. The second and third staves continue the melodic line with similar rhythmic patterns. The fourth staff includes triplets of eighth notes, indicated by a '3' above the notes, and concludes with a double bar line and repeat dots.