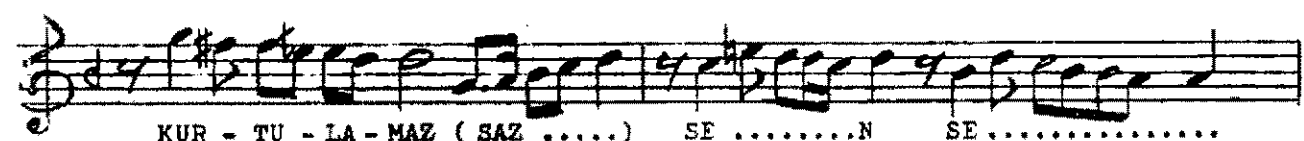
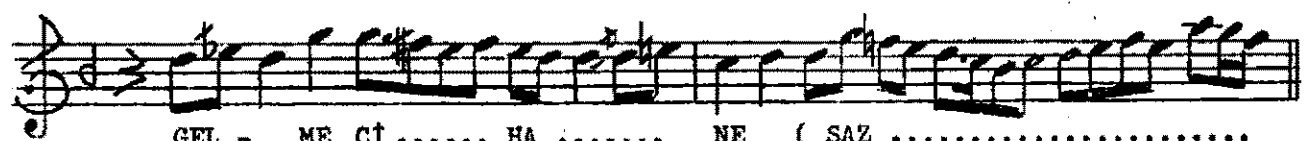
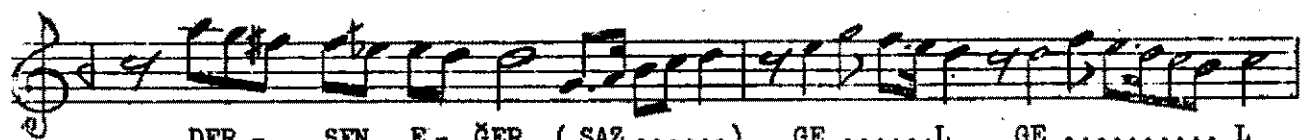
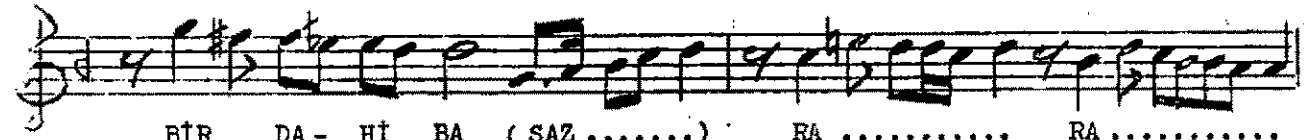
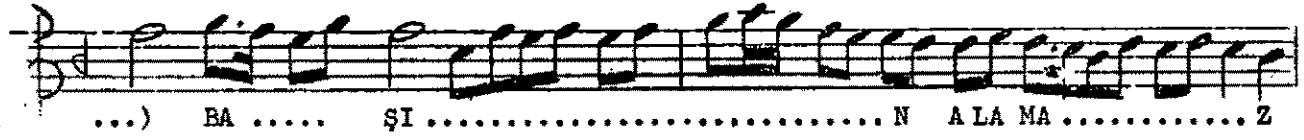
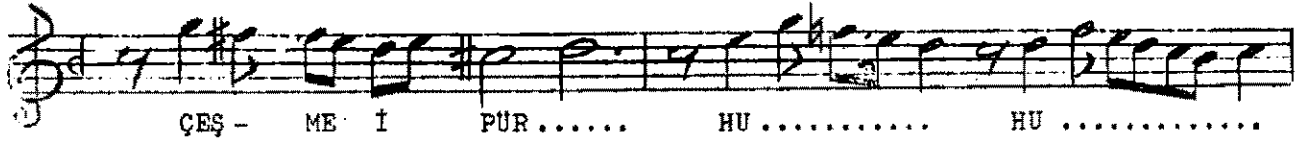
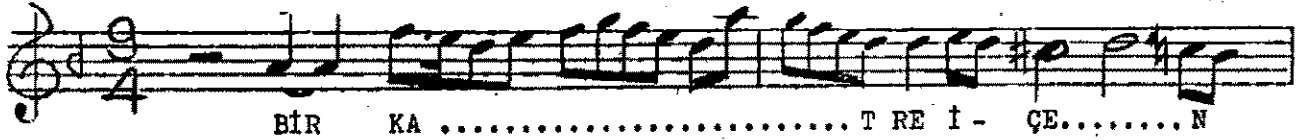


## BEYATİ ŞARKI

AĞIR AKSAK

( Bir katre için çeşme-i ..... )

ŞEVKİ BEY



Bİ BAHT O - LA - NIN ..... BA - ĞI - NA BİR  
 KAT RE Sİ DÜŞ - ME ..... Z ME ..... Z  
 BA - RA ..... N YE ... Rİ - NE .....  
 DUR RU GÜ - HER YAĞ - SA SE - MA - DA ..... N  
 YAĞ ... SA SE - MA .... DAN ( SAZ ..... ..)  
 ..) BA ..... RA ..... N YERİ NE .....  
 DÜR - RÜ GÜ - HER ( SAZ ..... ) YAĞ ..... YA .....  
 ... Ğ YAĞ .... SA SE - MA ..... DAN ( SAZ ..... )  
 ----- Arana ğmesi -----  
 1 2  
 E.B.

BİR KATRE İÇEN ÇEŞME-İ PUR HUN-İ FENADAN  
 BAŞIN ALAMAZ BİR DAHİ BARAN-I BELADAN  
 ASUDE OLAM DERSEN EĞER GELME CİHANE  
 MEYDANE DÜŞEN KURTULAMAZ SENG-İ KAZADAN  
 BİBAHT OLANIN BAĞINA BİR KATRESİ DÜŞMEZ  
 BARAN YERİNE DÜRR-Ü GÜHER YAĞSA SEMADAN..