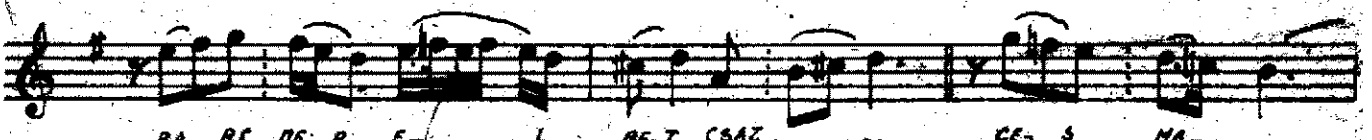
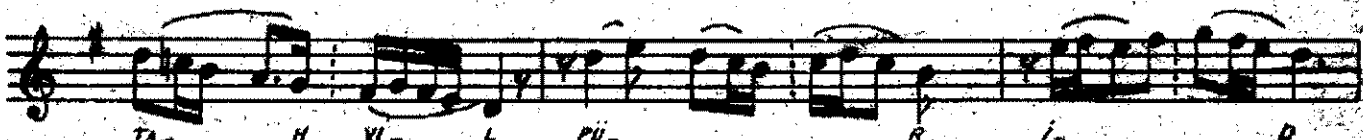
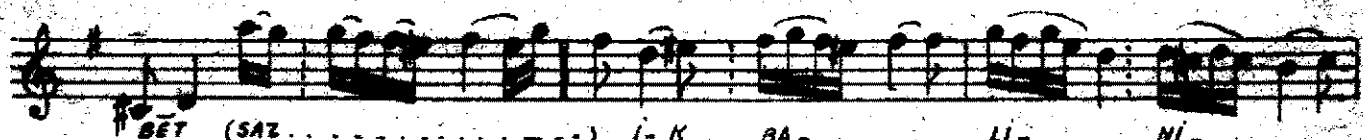
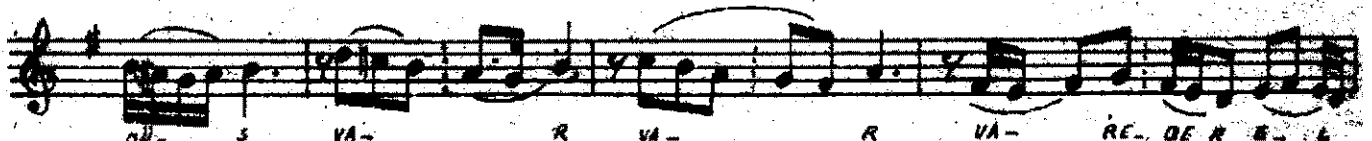
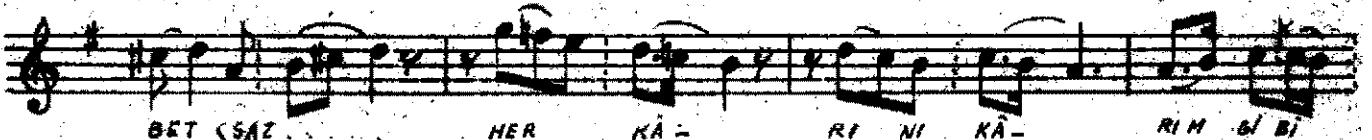


ÂHİMSENİ

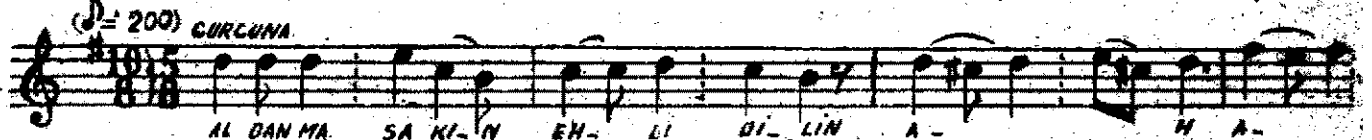
YEĞAH ŞARKI

SEVKİ.B.

(♩=112) AKSAK



(♩=200) ÇURCUNA



L. DAGLAR O- LA- MAZ EH- LI- DI- LIN

AKSAK

A- A- A- HI- NA NA

KODA

IL (SAZ ...)

The image shows a musical score for a song. It consists of four staves of music. The first staff is the vocal line with lyrics: "L. DAGLAR O- LA- MAZ EH- LI- DI- LIN". The second staff is a piano accompaniment with the tempo marking "AKSAK" and lyrics: "A- A- A- HI- NA NA". The third staff is a piano accompaniment with the tempo marking "KODA" and the instruction "IL (SAZ ...)". The fourth staff is a piano accompaniment. The music is written in a key signature of one sharp (F#) and a 2/4 time signature.

ÂHİM SENİ SİNEM GİBİ SUZÂN EDER ELBET
HER KÂRINI KÂRİM GİBİ DÜŞYAR EDE ELBET
ÇEŞMANINI GÖNLÜM GİBİ HUNBÂR EDER ELBET
ALDANMA SAKIN EHLİ DİLİN ÂHİNA GÂFİL
DAĞLAR OLAMAZ EHLİ DİLİN ÂHİNA HÂİL