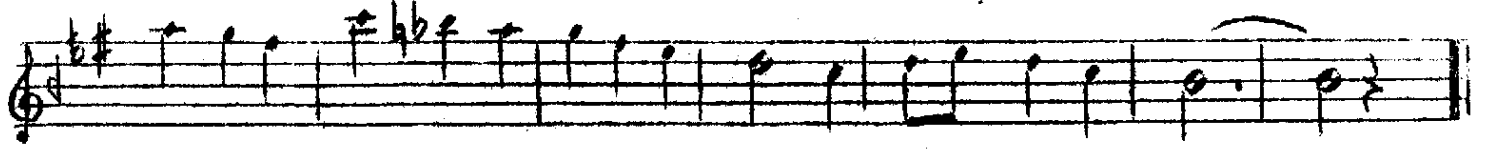
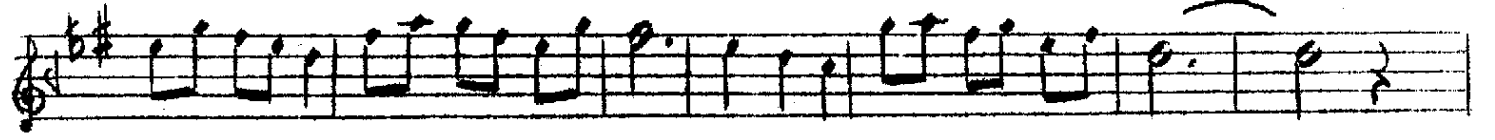
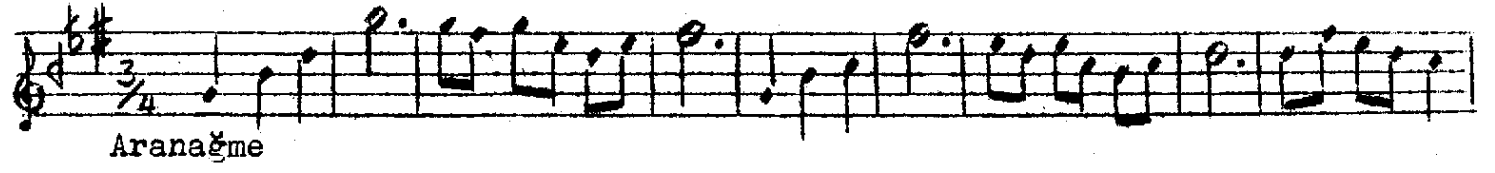



HÜZZAM ŞARKI

Semâf

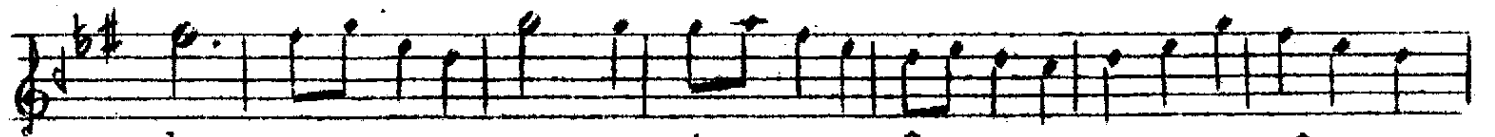
Beste-Güfte:
SÜLEYMAN ERGÜNER




-----Saz-----Saz-----



Câ nan kal maş hâ ri çin
Ey le dim fer yâ do dem



de gon ca i râ nâ
de bül bü li sey dâ



gi bi -- Saz -- gon ca i râ
gi bi bül bü li sey



nâ gi bi Saz Saz
dâ gi bi



Yâr mağ rur ağ yâr mes rur kal bi



mah zu num kırık



Saz Saz

Gördüm ki sarmış yârimin etrâfını ağyâr
Cânân kalmış hâr içinde gonca-i rânâ gibi
Yâr mağrûr, ağyâr mesrûr kalb-i mahzûnum kırık
Eyledim feryâd o demde bülbul-i şeydâ gibi.

Yâr : sevgili
Ağyâr : yabancılar
Cânân : sevgili
Rânâ : Katmerli
Mesrûr : sevinçli
Şeydâ : çılgın