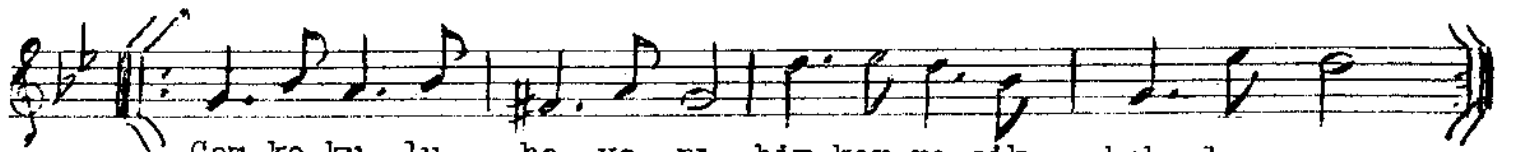
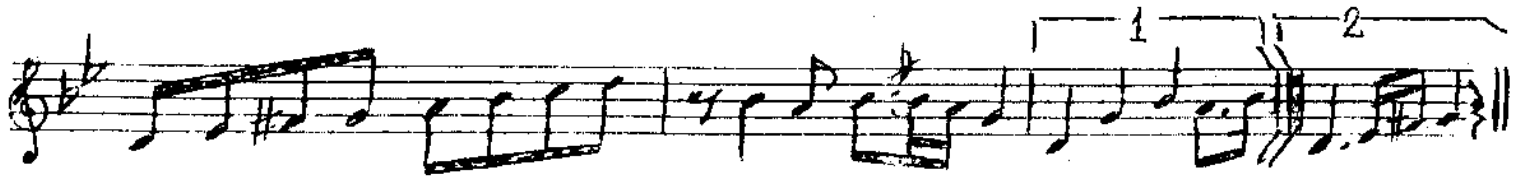
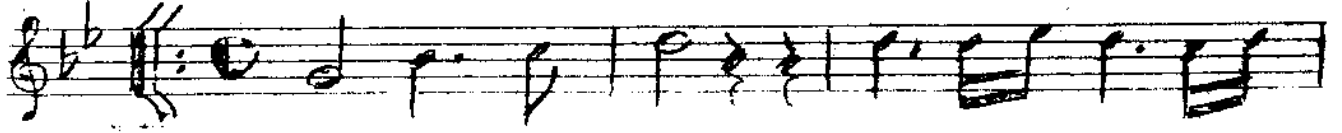


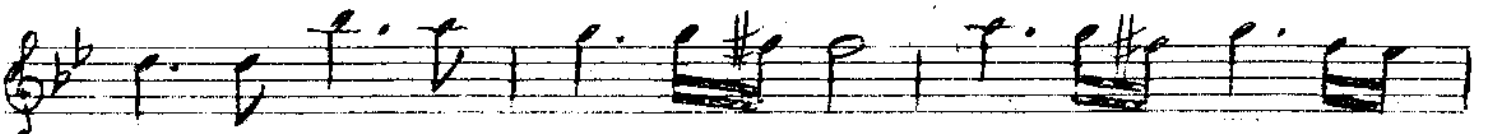
NİHAVEND ŞARKI

Süleyman Erguner

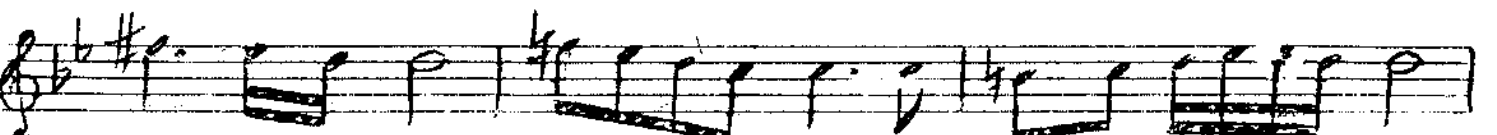
(Aranağmesi)



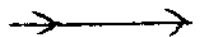
Çam ko ku lu ha va nı bir ker re cik kok la sam

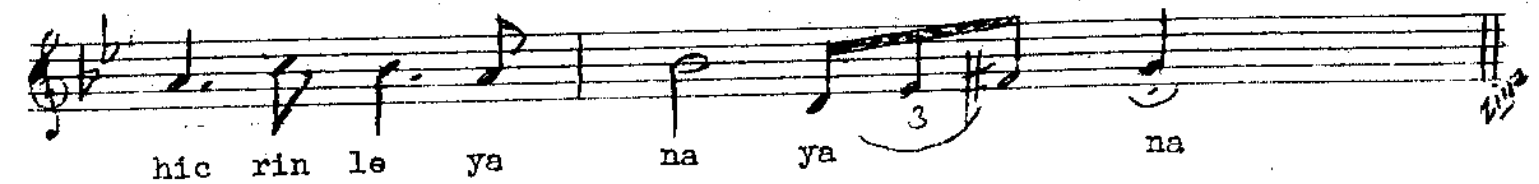
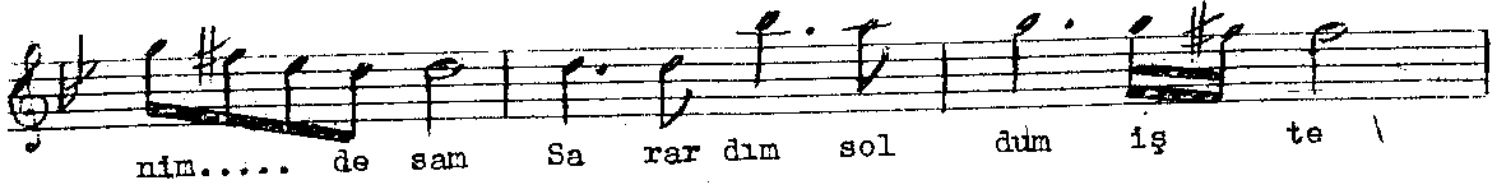
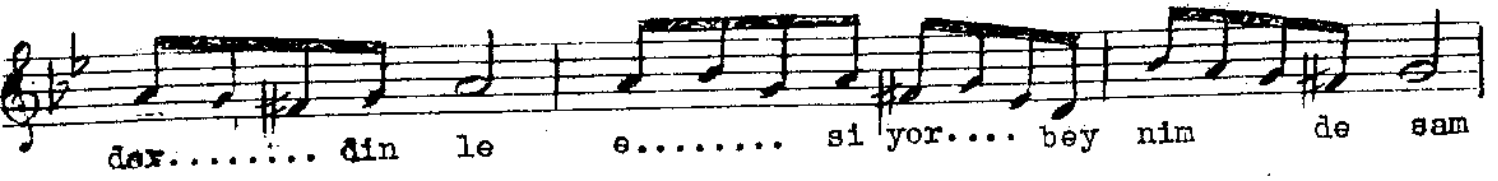
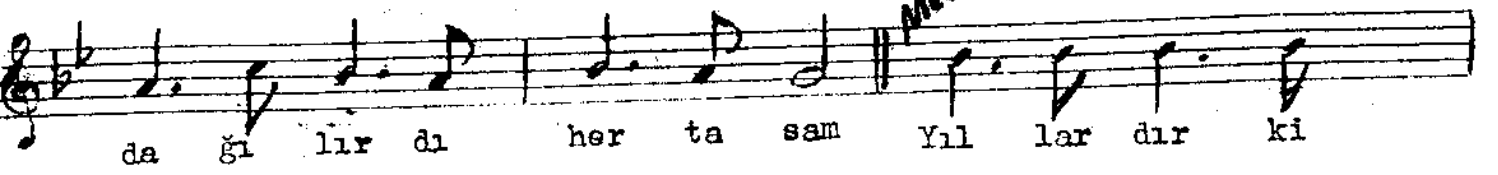


Fe rah lar dı yü re ğim da ğı lır dı



her ta sam fe rah lar dı yü.....re ğim





Çam kokulu havanı bir kerecik koklasam
 Ferahlardı yüreğim dağılırdı her tasam
 Yıllardır ki derdinle eşiyor beynimde sam
 Sarardım soldum işte hicrinle yana yana.