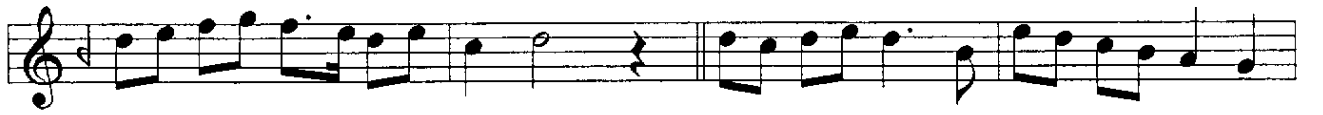


UŞŞAK MUHALİF PEŞREV

USÛL: ÇEMBER

BESTE: BİRİNCİ MAHMUD

Birinci Hane



Mülâzime §



İkinci Hane

Musical notation for the second hane (İkinci Hane). The notation is written on a single staff in treble clef, 2/4 time signature. It consists of 12 measures of music. The first measure starts with a quarter rest. The melody is composed of eighth and sixteenth notes, with some beamed sixteenth notes. There are several accidentals: a sharp on the second measure, a sharp on the fourth measure, and a flat on the eighth measure. The piece concludes with a double bar line and a repeat sign.

Üçüncü Hane

Musical notation for the third hane (Üçüncü Hane). The notation is written on a single staff in treble clef, 2/4 time signature. It consists of 12 measures of music. The first measure starts with a quarter rest. The melody is composed of eighth and sixteenth notes, with some beamed sixteenth notes. There are several accidentals: a flat on the second measure, a flat on the third measure, a flat on the fourth measure, a flat on the fifth measure, a flat on the sixth measure, a flat on the seventh measure, a flat on the eighth measure, a flat on the ninth measure, a flat on the tenth measure, a flat on the eleventh measure, and a sharp on the twelfth measure. The piece concludes with a double bar line and a repeat sign.

Dördüncü Hane

The image displays a musical score for a piece titled "Dördüncü Hane". The score is written in a single system on a grand staff (treble clef) and consists of six staves of music. The key signature is one flat (B-flat), and the time signature is 2/4. The music is characterized by a steady eighth-note rhythm. The first staff begins with a treble clef and a key signature of one flat. The second staff continues the melody, featuring a B-flat note. The third staff shows a sequence of eighth notes with a B-flat note. The fourth staff continues the eighth-note pattern, ending with a B-flat note. The fifth staff shows a change in the melody, with a B-flat note and a sharp sign. The sixth staff concludes the piece with a double bar line and a repeat sign.

Bu eser TRT Müzik Dairesi Arşivi' nden alınmıştır.