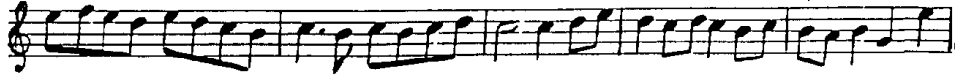
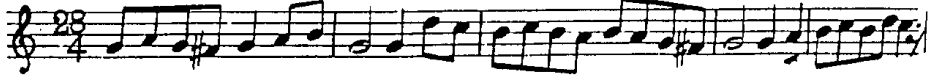


SÖZİDİLARA PEŞREVI

Devr-i kebir

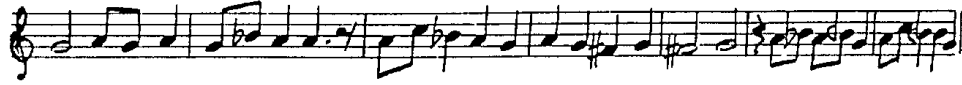
Sultan Üçüncü Selim



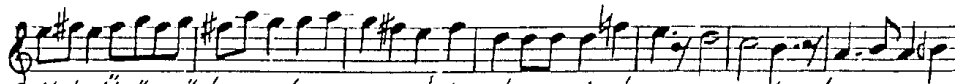
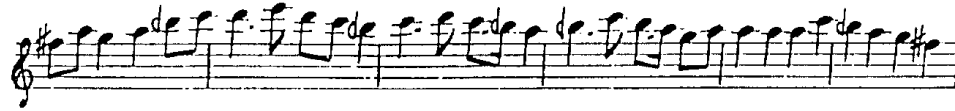
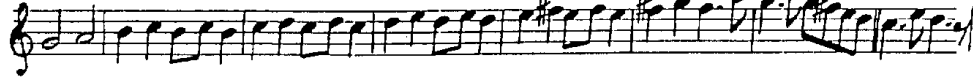
*Teslim.*



2. Hane



3. Hane



Not: Üçüncü haneden sonra, ikinci hanenin başına geçilecek,  
ikinci hane teslimle beraber calmak suretile Peşrev  
tamamlanmış olacaktır.

Devr-i kebr

SÜZİDLARA AYIN-I ŞERİFİ

Sultan Üçüncü Selim

Hey . . . yâr . . . dil be ri uü  
hâ ri hâ ri

bi mas di li es ra ri  
ti çün o yâ ri ri

hey . . . yâr . . .

hey . . . dost . . . yâr pi . . . ri

men . . . hey . . . yâr

Nev be ti . . . köh ne fû ru şan . . .

der . . . gü zest . . .

hey . . . yâr hey dost yâr pi . . . ri

me . . . hey . . . yâr

nev fû ru şa . . . ni . . . mü in bā

zā . . . ri mast . . .

hey . . . yâr . . . hey . . . dost

yār pi . . . ri men

Se ma ā . . . rē . . . mi cā . ni ā . si . . .

ka . . . . . nest . . . . .

ke si . . . da . . . ned ki o . . . ra cā . . .

nū cā . . . . . nest . . . . .

Hu su . . . sa hal kai . . . kân der . se ma . . . . .

and . . . . . he mi . . . den dü Kā . . . be der

me ya . . . . . nest . . . . .

In aş ki ke ma les tü ke ma . . . . . les tü ke mal . . . . .

vin . ak lü ha ya les tü ha yâ . . . . . les tü ha yal ehi

di da ri ce ma les tü cema . . . . . les tü cema . . . . .

nü . restüvi sa . les . tüvi sa . . . . . les tü vi sal . . . . .

(4)

Çün . ben de ne i ni da yi sa  
 Çün ez ho du gey ri hod mü sel

hi . mi . . zen ah Ti ri na za ren .  
 lem keş fi ah Bi hod bi ni sin

cü nan ki ha hi . mi . zen . ah  
 'kâ si i lâ hi mi zen ah

hey hey hey hey hey hey . . . dost . . . . .

dost . . . . . ih sanme ded . . gufranme ded . .

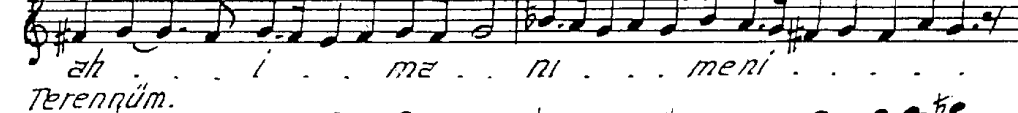
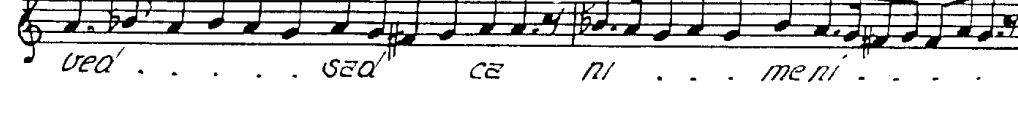
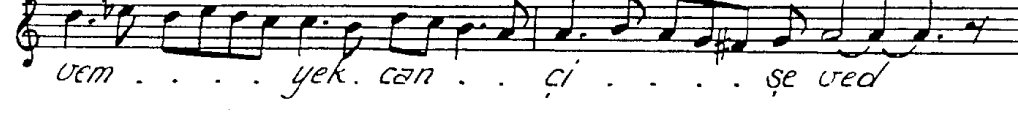
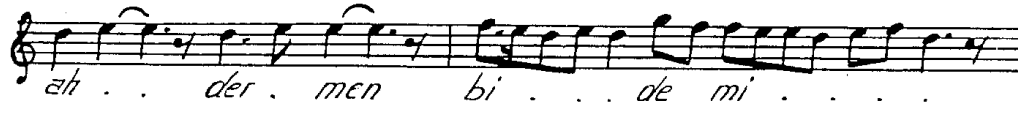
yar . . . yâr . . . . . yâr yâr . yâ . . ri men . . . . .  
 Terennüm.

E. BİNGÖL

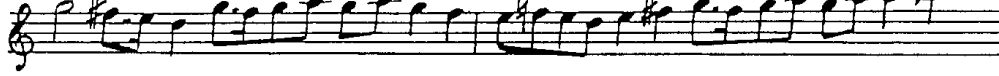
Evfer.

"İkinci Selâm."

(5)



Terennüm.



*Üçüncü Selâm*

*Frenkcin*

Mut his ri sa ba es ra ra can  
 fe ma za ra ah baz alt baz gu gu  
 mah ze ni in na  
 fe tah na ah ber kü sa  
 sir ri ca ni  
 Mus ta fa ra

baz Terennüm. gü

Ey ki. he zâr a se rin. ah . . . bu ni ce sul  
Her ki bu gün ve le de ah i na nu ben

tan o lur yüz sü re . . . Ku li o lan ki ş i ler . ah . . .  
yok sul i se bay o lur ah

Hus re vü ha kâ no lur a man hus re vü ha kâ no lur  
Bay i se sul tan o lur a man bay i se sul tan o lur  
Terennüm.

Kâ ri ne de rem cüz in. hâ ri ye hi hâ rem est  
lâ fi ze nem lâ fû lâ f zan ki hi ri de rem est

Câ nû di lem sa kî nest cûn ki di li , câ nem ost

Kâ fi le em ey me nest. kâ fi le sa lâ rem ost . . .  
Terennüm.

Hz ki im ru zi ci han a ni mast zühre vûmehosfzeni sa  
Câ nû ci han sa kî i miñ na ni mast

di i mast bül bü li can mest gü lis ta ni mast . . .

. . . Ah gü ze lin aş ku na ha lâ tı na . . . a manyendiyürek

askhara ra tı na . . . ah and i çeyimgayrı güzel

sevmeyim . . . ah Tën ri ye vü Tën ri rin a ya tı na . . .  
Terennüm.

kâ şî fi es ra rı hu de Mev lâ na sul ta ni fe na

şâ hı be kâ Mev lâ na . . . na ask it me de dir



hazre ti ne böyle hi tab . . . . . mev lâ yi gü ru

hi ev li ya Mev lâ . na mev lâ yi gü ru

Hi ev li ya Mev lâ . na . . . . . *Dördüncü Sekim*

*Evfer.*  
Ah . . . . . sul . ta . . ni me . ni . . . . .

*Saz*  
sul ta . . ni . . . . . meni . . . . .

ni . . . . . en der ah di . . . . . lü can . . . . .

can . . . . . i ma ni . . . . . me ni . . . . .

ah . . . . . der men bi . . . . . de mi . . . . .

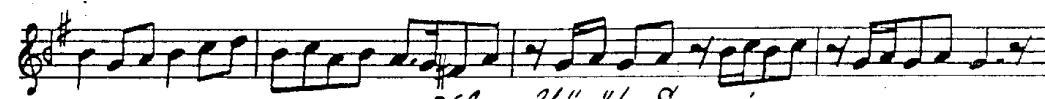
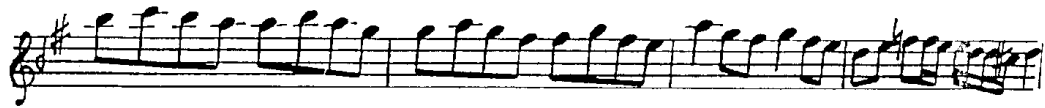
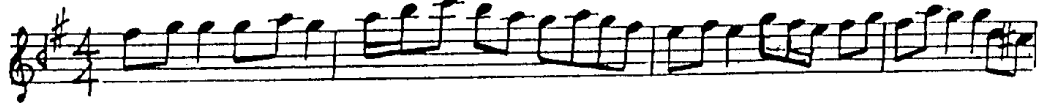
mi . . . . . men zin . de . . . . . şe vem . . . . .

ven . . . . . yek can . . . . . ci . . . . . ise ved . . . . .

ved . . . . . sad . . . . . ca . . . . . ru . . . . . meni . . . . .

ah . . . . . i . . . . . ma . . . . . ni . . . . . meni . . . . .

*„Çon Peşrev..“*



*„Çon Yürük Semâi..“*

