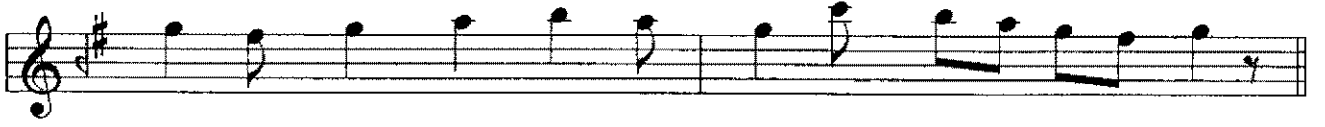


GERDANIYE KIZ SAZ SEMÂSİ

USUL: AKSAK SEMÂİ

BESTE: SUPHİ EZGİ

1.HANE



MÜLÂZEME §



2.HANE



3.HANE



4.HANE

The image displays a musical score for a piece titled "4.HANE". The score is written on ten staves of music, all in treble clef and G major (one sharp). The first staff begins with a treble clef and a key signature of one sharp (F#). The second staff continues the melody. The third staff shows a change in rhythm with eighth and sixteenth notes. The fourth staff features a change in time signature to 10/16. The fifth staff continues the melody with eighth notes. The sixth staff shows a change in rhythm with eighth and sixteenth notes. The seventh staff continues the melody with eighth notes. The eighth staff shows a change in rhythm with eighth and sixteenth notes. The ninth staff continues the melody with eighth notes. The tenth staff concludes the piece with a double bar line and a repeat sign.

Bu eser Ameli ve Nazari Türk Müsıkisi kitabından alınmıştır.