

# ŞEREFNUMA

Devri: kebir.  
Bittinâ Hattâ

Peşrev

Dr. Suphi Ezgi

Handwritten musical notation for the first section of the piece, consisting of five staves of music in treble clef with a key signature of one sharp (F#) and a 4/4 time signature.

♩. Mûlâlime

Handwritten musical notation for the second section of the piece, consisting of three staves of music in treble clef with a key signature of one sharp (F#) and a 4/4 time signature.

2. Hane

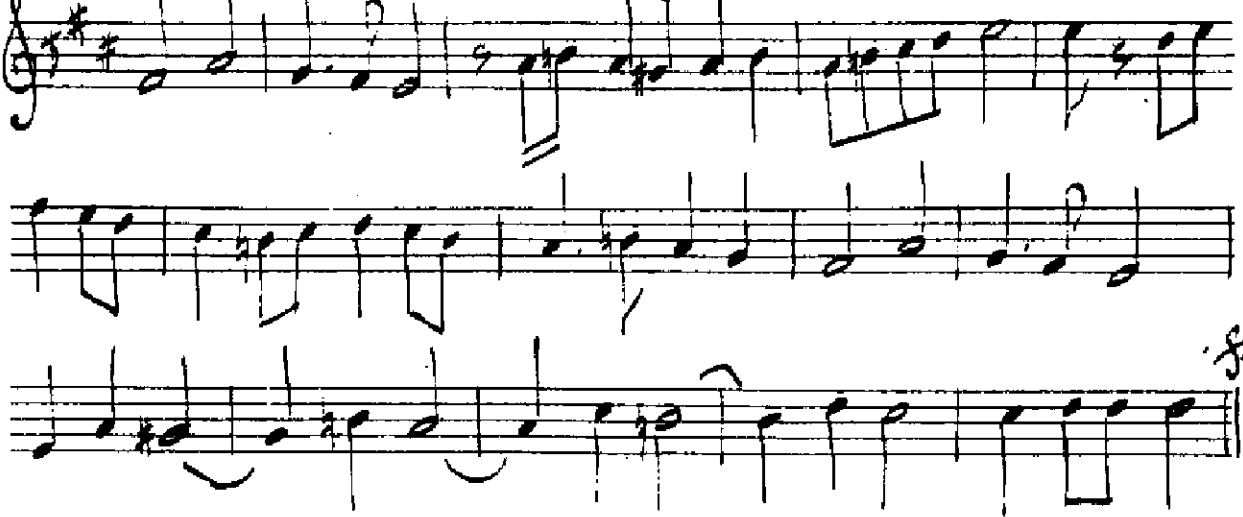
Handwritten musical notation for the third section of the piece, consisting of two staves of music in treble clef with a key signature of one sharp (F#) and a 4/4 time signature.



3. Hane



4. Hane



GÜNEYT KOSAL