

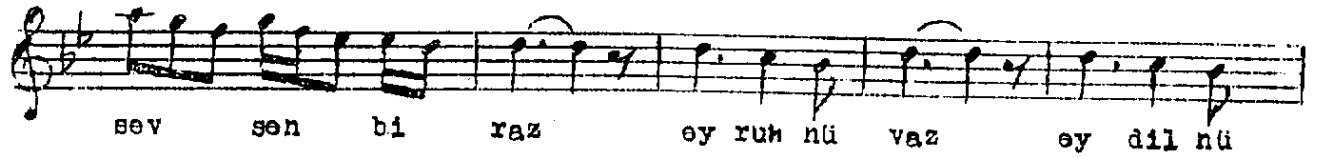
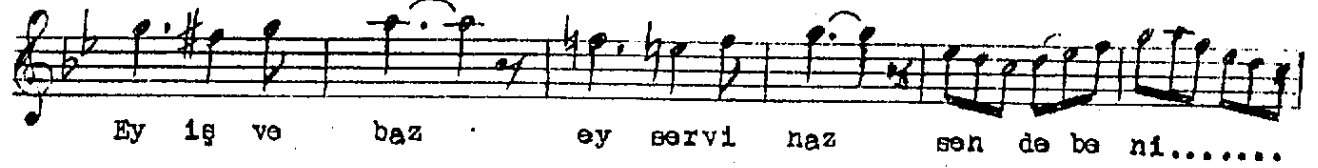
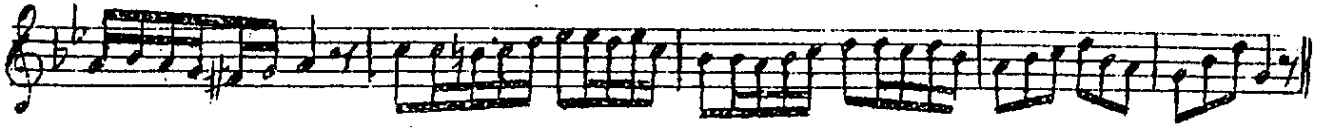
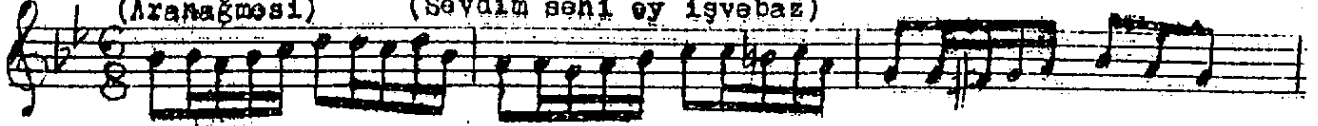
NİHAVEND ŞARKI

tanbûri Cemil Bey

Yürük Semâi

(Aranağmesi)

(Sevdim seni ey işvebaz)



Sevdim seni ey işve bâz  
Çekdiklerim takat-güdâz  
Bunca zaman ettim niyâz  
Bilmem neden bu ihtirâz.

Ey işve-bâz ey servi-nâz  
Sen de beni sevsen birâz  
Ey ruh-nüvâz ey dil-nüvâz  
Hicrâna ol sen çaresâz

İşve-bâz - işveyle oynayan  
Takat-güdâz - takati mahveden  
Niyâz - yalvarma  
İhtirâz - çekinme

Servi nâz - naalı servi (boylu)  
Ruh-nüvâz - ruh okşayan  
Çare-sâz - çare bulan