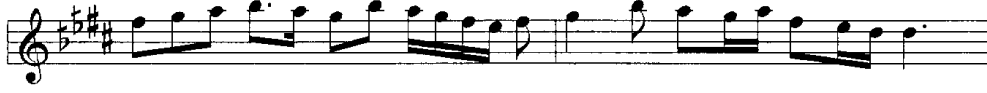


## ŞED ARABAN SAZ SEMÂSİ

USÛL: AKSAK SEMÂİ

BESTE: TANBURI CEMİL BEY

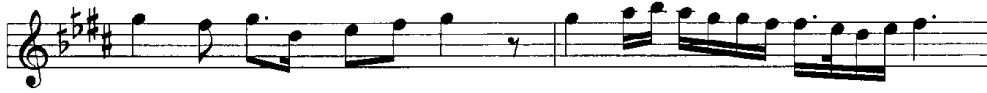
*Birinci Hane*



*Mülâzime* §



*İkinci Hane*



Üçüncü Hane



Musical notation for Üçüncü Hane, consisting of four staves. The key signature is three sharps (F#, C#, G#) and the time signature is 6/8. The notation includes various rhythmic values, including eighth and sixteenth notes, and rests. The piece concludes with a double bar line and a repeat sign.

Dördüncü Hane



Musical notation for Dördüncü Hane, consisting of seven staves. The key signature is three sharps (F#, C#, G#) and the time signature is 6/8. The notation includes various rhythmic values, including eighth and sixteenth notes, and rests. The piece concludes with a double bar line and a repeat sign. The text "YÜRÜK SEMÂİ" is written below the first staff.