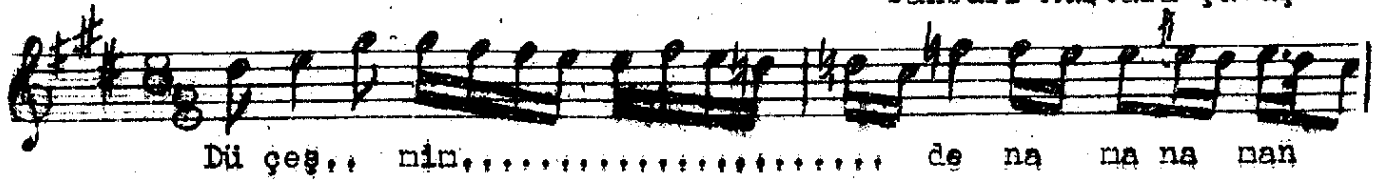


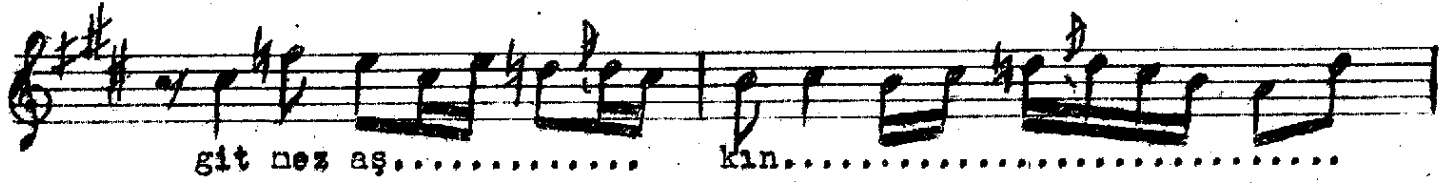
Düyek

HİSAR-BÜSELİK ŞARKI

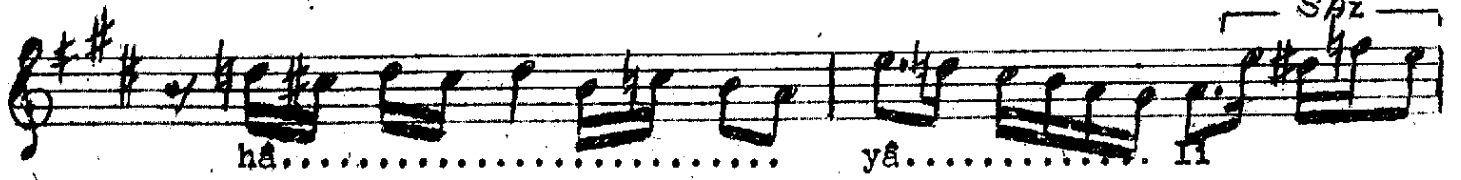
Beste ve güfte
Tanbûri Mustafa Çavuş



Dü çeş.. min..... de na na na nan



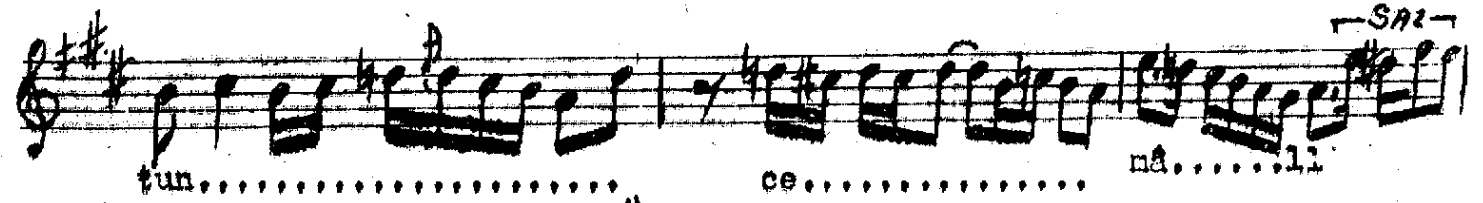
git nez aş..... kin.....



hâ..... yâ..... ^{Saz} li



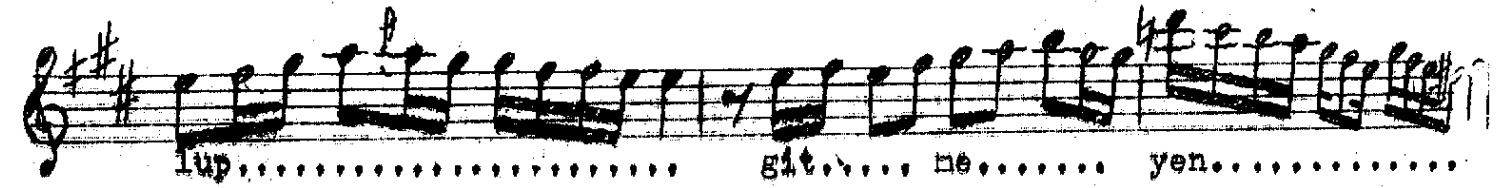
Kib le nol..... du a mana nan ba nados....



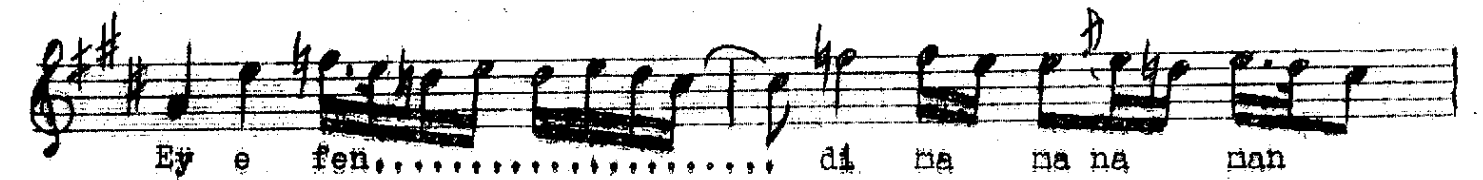
tun..... ce..... ^{Saz} nâ..... li



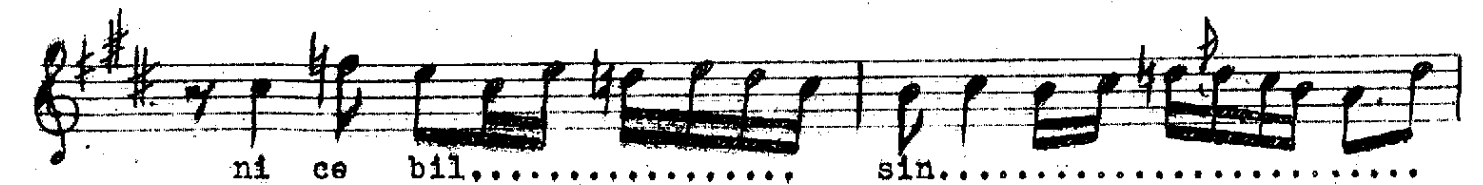
Râ hi aş..... ka..... sü va... ro



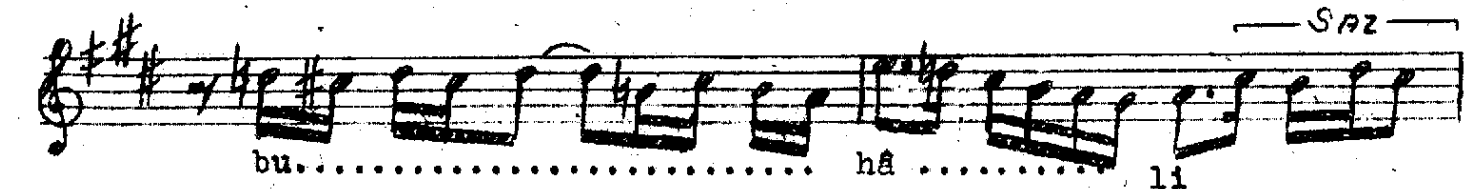
lup..... git... me..... yen.....



Ey e fen..... di na na na nan

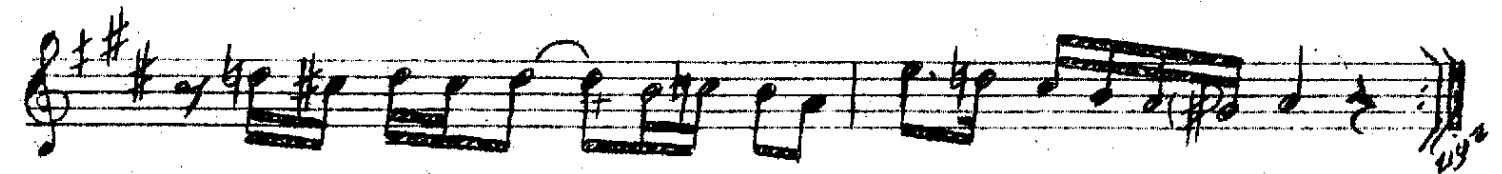
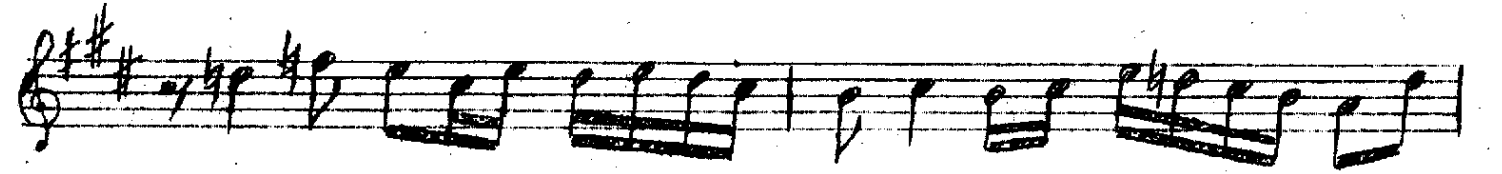
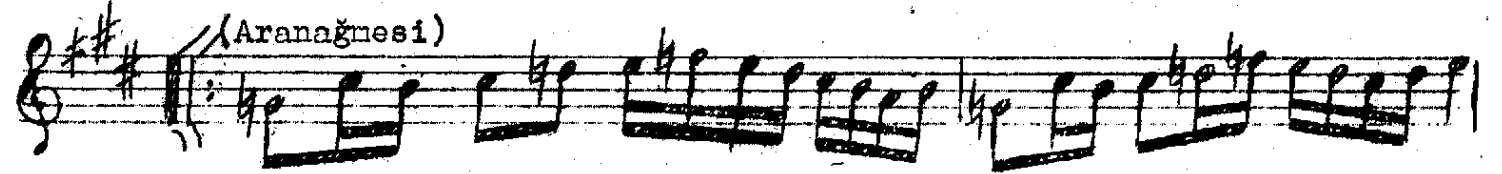
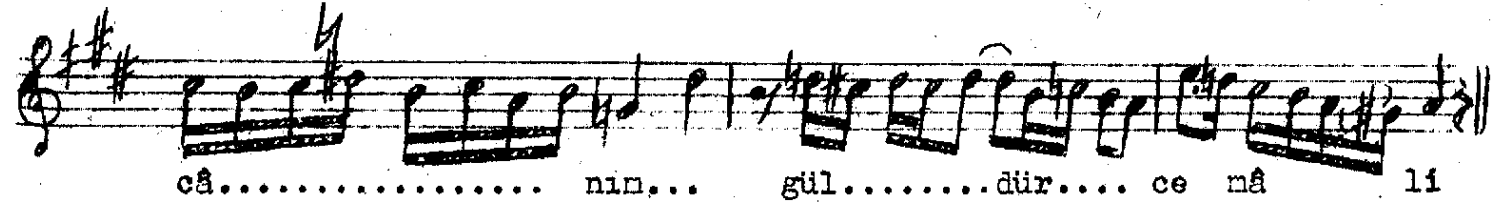
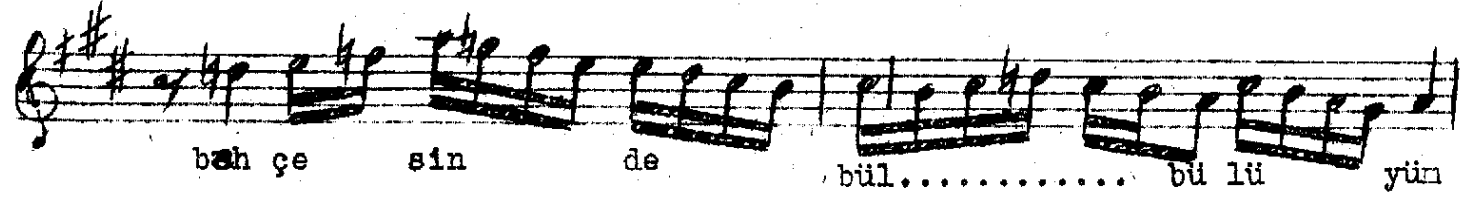
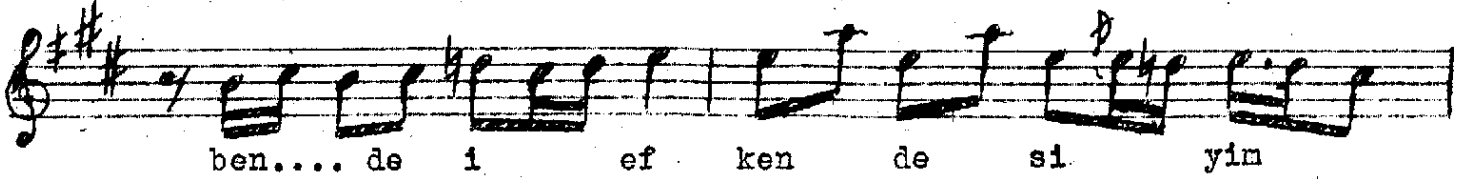
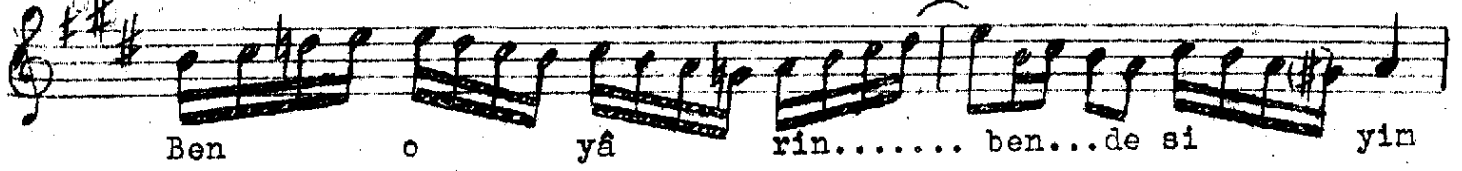


ni ce bil..... sin.....



bu..... hâ..... ^{Saz} li

(Nakarat)



Dü çeşminden gitmez aşkın hayâli
Kiblen oldu bana dostun cenâli
Râh-ı aşka süvâr olup gitmeyen
Ey efendin nice bilsin bu hâli

Nakarat

Ben o yârin bendesiyin
Bende-i efkendesiyin
Bahçesinde bülbülüymün
Cânın güldür cenâli .

Dü - iki
Çeşn - göz
Cenâl- güzellik
Râh - yol
Süvar olmak - ata binmek
Bende- kul
Efkende- âciz, düşürülmüş,
yıkılmış, atılmış olan