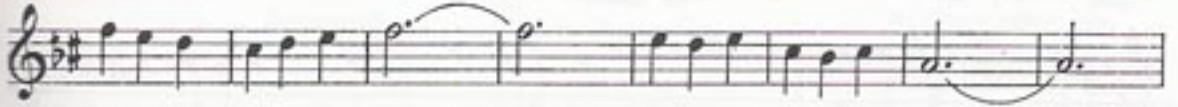


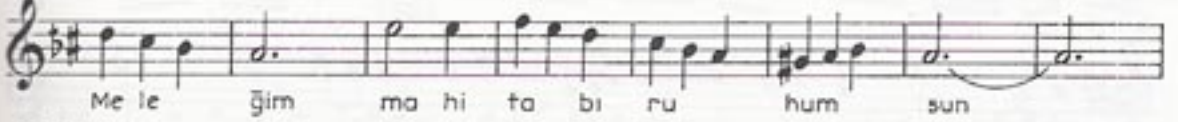
HİCÂZ ŞARKI
Aşk mektubu

BESTE : Yesârî Âsım
ARSOY_1933
GÜFTE : İhsan Bey

USÛLÜ : Semâî



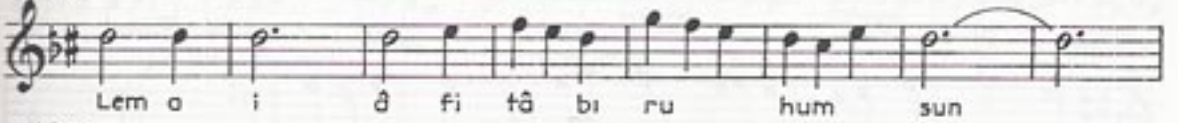
ERKEK



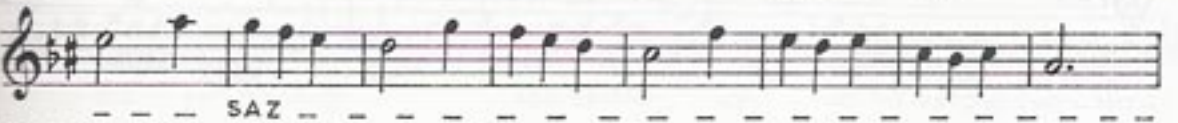
KADIN



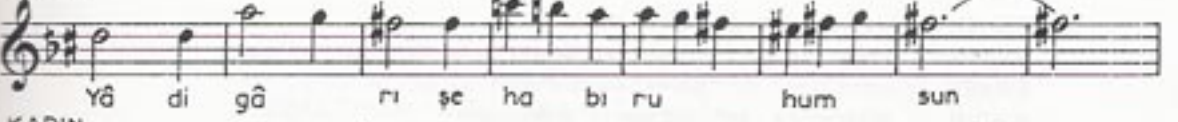
ERKEK



KADIN



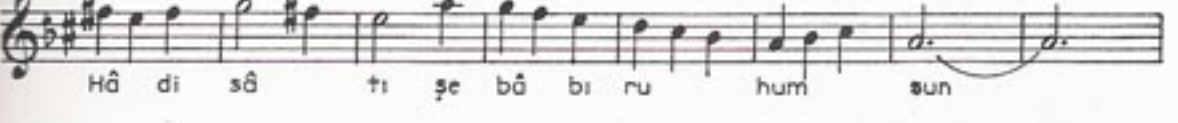
ERKEK



KADIN

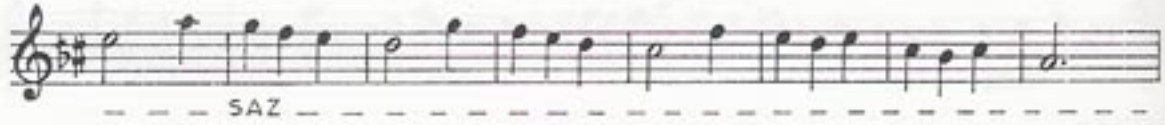


ERKEK

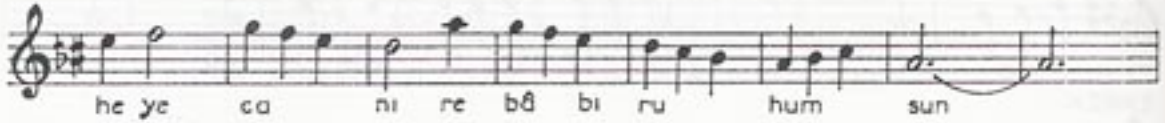
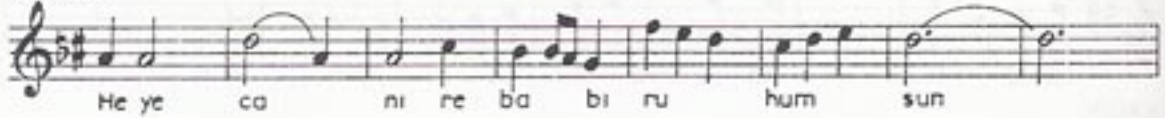


HİCÂZ ŞARKI'nın devâmı

KADIN



ERKEK



KADIN



KADIN-ERKEK (Beraber)



- ERKEK : Meleğim mâhitâb-ı rûhumsun
 KADIN : Emelimsin bahâr-ı aşkımsın
 ERKEK : Lem'a-î âfitâb-ı rûhumsun
 KADIN : Haşredek sen mesâr-ı aşkımsın
 ERKEK : Yâdigâr-ı şehâb-ı rûhumsun
 KADIN : Sen benim hem hezâr-ı aşkımsın
 ERKEK : Hâdisât-ı zebâb-ı rûhumsun
 KADIN : En güzel bir nigâr-ı aşkımsın
 ERKEK : Heyecân-ı rebâb-ı rûhumsun
 KADIN : Neş'e-î kalb-î zâr-ı aşkımsın.