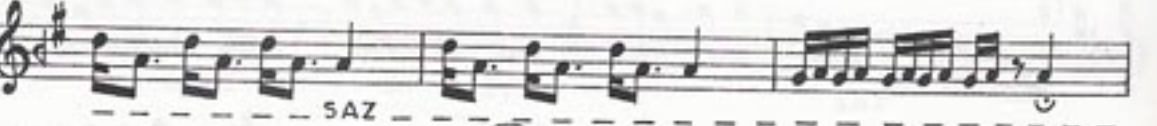
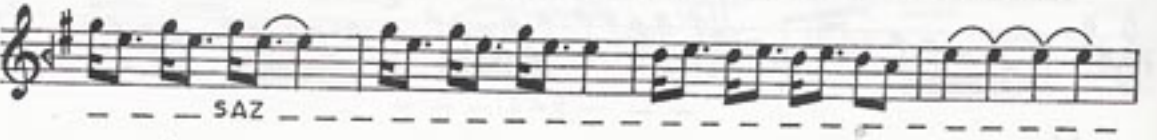
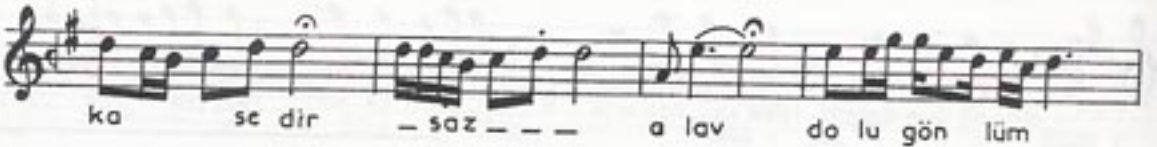
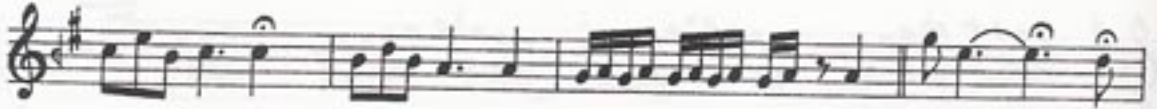


HÜSEYNÎ ŞARKI

Bir kâsedir

BESTE : Yesârî Âsım
ARSOY
GÜFTE : Râbia Hâfûn

USÛLÜ : Sofyan (Serbest)



HÜSEYNÎ ŞARKI'nın devâmı

Sun san e lin le ka nı mı iç sem

--- SAZ --- ka na ka na

--- SAZ ---

BİR KÂSEDİR ALAV DOLU GÖNLÜM YANÂ YANÂ
MEN TA SENİN YANINDA DAHİ HASRETEM SANA
YAŞLAR DÖKENDE ŞÖNDÜREMEZ ÂTEŞİMİ SÜ
SUNSAN ELİNLE KÂNIMI İÇSEM KANÂ KANÂ.