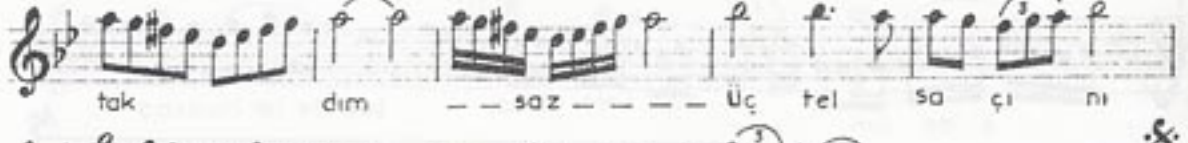
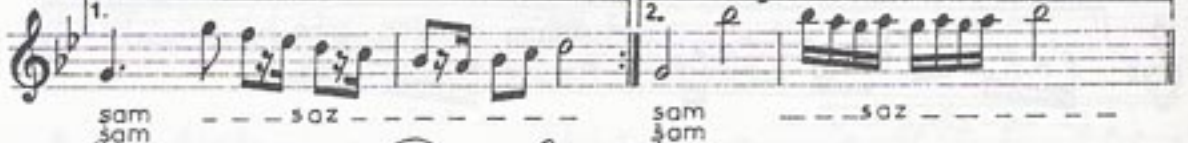
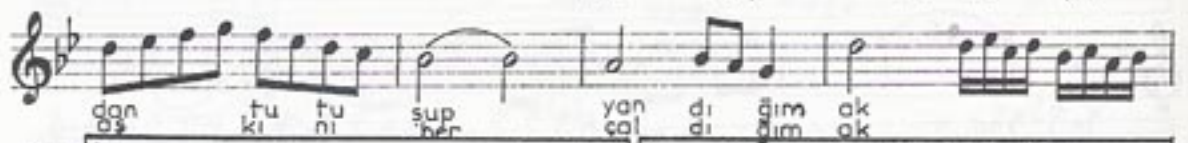
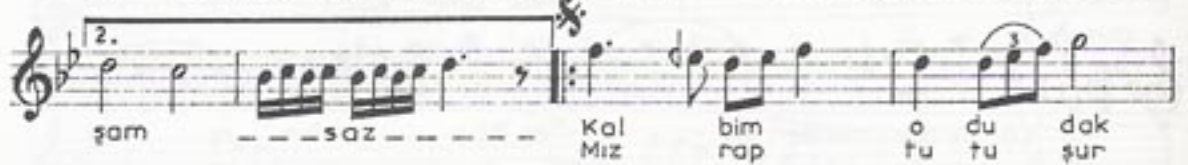
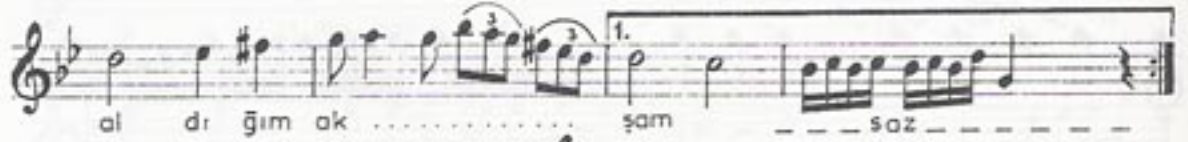
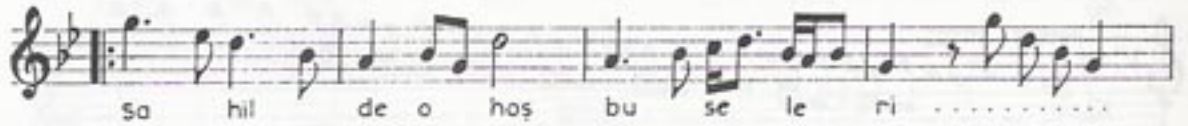
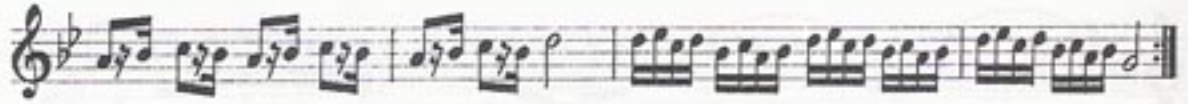


NIHÂVEND ŞARKI
Bir sâhil hâtırası

USÛLÜ: Sofyan

BESTE
ve : Yesârî Âsim
GÜFTE ARSOY
İST. Fâtih-1937



SÂHİLDE O HOŞ BÛSELERİ ALDIĞIM AKŞAM
KALBİM O DUDAKTAN TUTUŞUP YANDIĞIM AKŞAM
ÜÇ TEL SAÇINI HASTA KIRIK SÂZIMA TAKTİM
MİZRAP TUTUŞUR AŞKINI HER ÇALDIĞIM AKŞAM