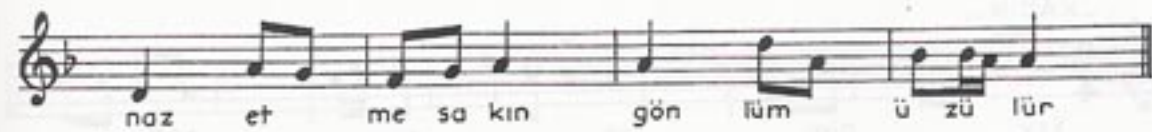
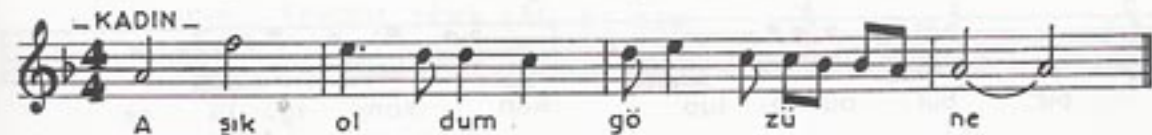
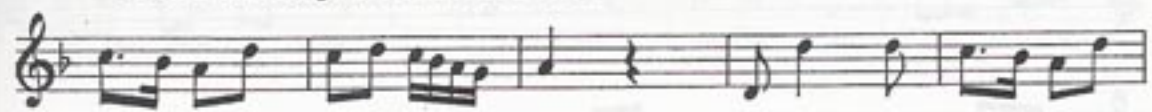
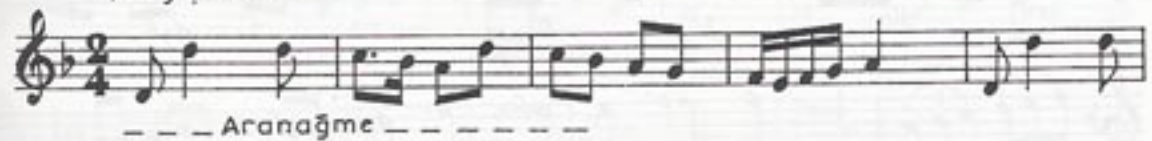


KÜRDÎ FANTEZİ  
(PERESTİŞ)  
Esmen yüzüne

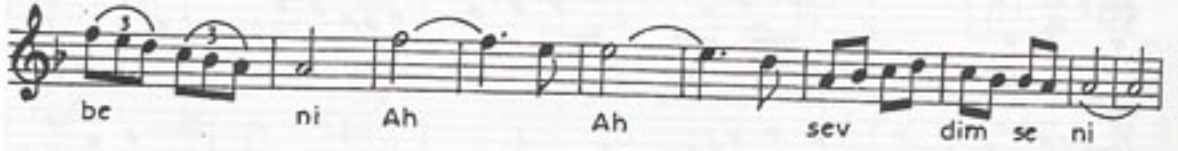
BESTE  
ve : Yesârî Âsım  
GÜFTE ARSOY

USÛLÜ: Nîm sofyan  
(Değişmeli)

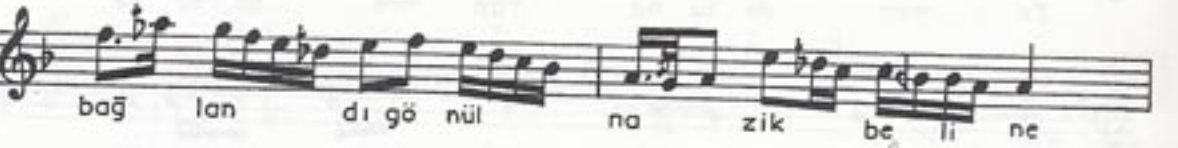


KÜRDÎ FANTEZİ'nin devâmı .2

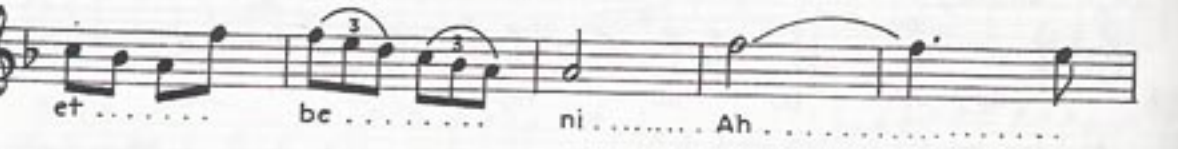
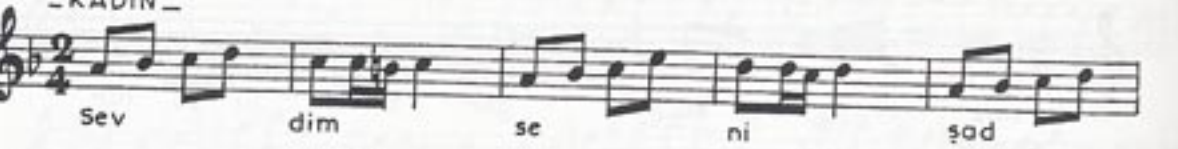
-KADIN-



-ERKEK-



-KADIN-



KÜRDÎ FANTEZİ'nin devâmı \_3

Ah sev dim se ni val  
lah se ni bil lah se ni

ERKEK - ESMER YÜZÜNE TAPTIM SÖZÜNE  
BİR LAHZA SENİN YATSAM DİZİNE

KADIN - ÂŞIK OLDUM YÜZÜNE

ERKEK - SÎNEN ÇÖZÜLÜR ÇEŞMİN SÜZÜLÜR  
NÂZ ETME SAKIN GÖNLÜM ÜZÜLÜR

KADIN - BU AŞK BANA HEP CEFÂ  
ŞÂD ET BENİ SEVDİM SENİ

ERKEK - ALTIN SAÇININ HER BİR TELİNE  
BAĞLANDI GÖNÜL NÂZİK BELİNE  
BİR BÜLBÜL OLUP KONSAM GÜLÜNE  
SÜRSEM YÜZÜMÜ NERMİN ELİNE

KADIN - SEVDİM SENİ ŞÂD ET BENİ

KADIN - SEVDİM SENİ VALLAH SENİ  
ERKEK -